

PINO
STUDIO



WE DESIGN PLACES WELL.



PINO
PLACES

SERVICES

PINO Places is a full-service architecture studio and provides a wide range of services.



BLUE OCEAN TOOLS

allows PINO to have a more inclusive design process by providing clients a more immersive experience.



**PHOTO REALISTIC
RENDERING**



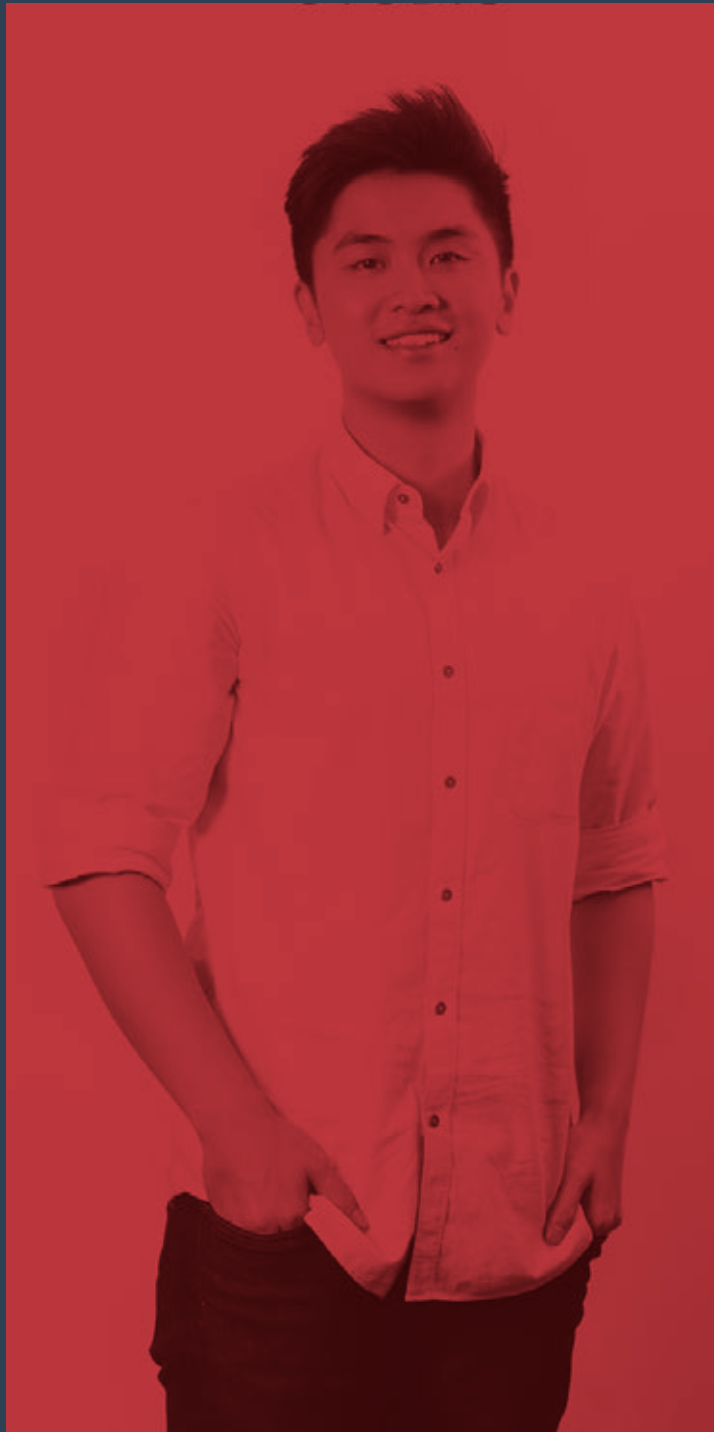
**VIDEO RENDER
ANIMATION**



3D PRINTING



VIRTUAL REALITY



LEADERSHIP

NICHOLAI DAVID GO

FOUNDER AND PRINCIPAL ARCHITECT

As the founder and principal architect of PINO Places, Nicholai has been pushing the Philippine architectural scene to be more inclusive of different disciplines. He believes multi-disciplinary discourse can grow the concept of designing WELL, which can ultimately equitably raise the standard of living and bring forth a new age of wellbeing for everyone.

Nicholai graduated with a b.Arch in 2016 from Rhode Island School of Design. His first internship was with MASS design group based in Boston, who focused on architecture that made people more healthy. Nicholai was also awarded a fellowship from Mass General Hospital and Harvard to fly to a remote village in Kenya to design and build a hospital.

Since coming back to the Philippines, he has been growing his portfolio and honing his skills and ethos as an architect. He has worked on several projects from large masterplans to small interior design projects. No matter the scale, he practices the same careful touch to all projects.

Nicholai is also a businessman who started a food chain business at the age of 15. He is an award winning photographer bagging the title of Student of the Year by Professional Photographer Magazine in 2013 among many other awards. At the age of 24, he took over as Chief Operating Officer of his family business Fabtech Group of Companies, which is involved in construction and kitchen equipment at the age of 24. Within the family business, he personally programmed it's ERP database software from scratch. He cofounded PINO in 2018 in the hopes of practicing his design skills.

OUR KEY PROJECTS

RESIDENTIAL

7 // VILLALON
TOWNHOUSE

12 // LOS BANOS REST
HOUSE

18 // INDOOR FOREST
HOUSE

26 // 4916 ENRIQUE ST.
TOWNHOUSE

37 // RIDGEWOOD
HEIGHTS TAGAYTAY

45 // BALETE SKYLINE
APARTMENT

53 // BAGUIO AIRBNB

COMMERCIAL

56 // CACAO RESERVE
HOTEL

62 // SEDA HOTEL

70 // LUFTHANSA
TECHNIK

73 // HCT DIALYSIS
CENTER

81 // FABTECH HQ
MAGALLANES

86 // FABTECH WOFEX
BOOTH

F & B

88 // AURO CAFE BGC

93 // AURO CAFE TAFT

97 // THE BAKERY
BY CAFE DOLCI

101 // GERONIMO
JAPANESE RESTAURANT

111 // TANDEM FINE
DINING RESTAURANT

114 // BUBU BARS BGC

118 // ALT SCOOPS
PORDIUM STALL

121 // PAPER + CUP
CAFE



Residential // 400 sqm // Taguig, Philippines

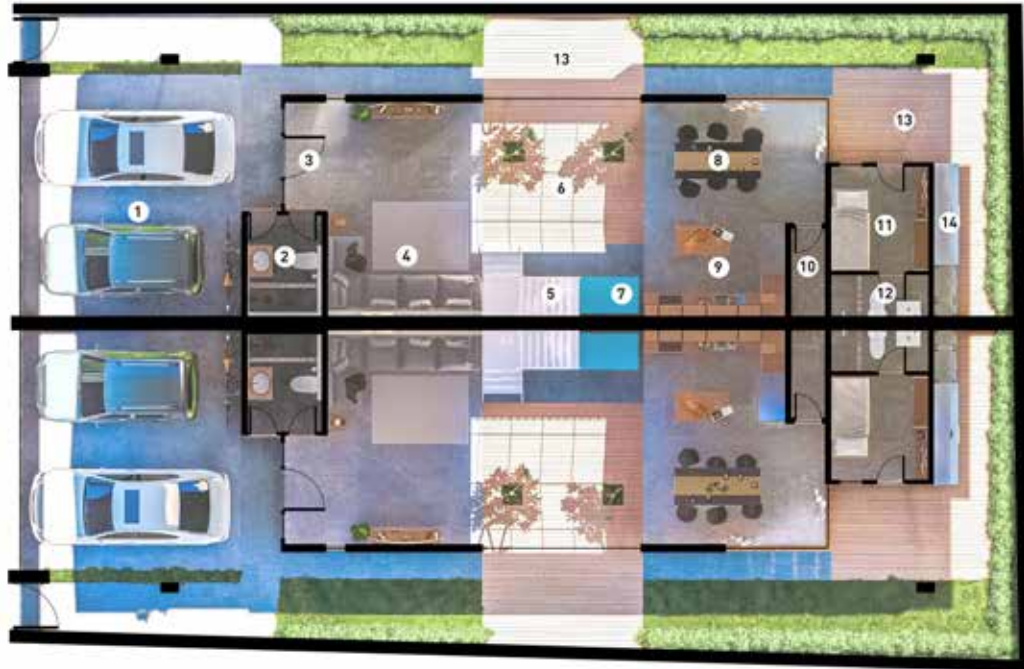
Architecture + Interior Design + Site Analysis + Arch Visualization

VILLALON TOWNHOUSE

Situated in a prime location, the APHOVAI Townhouse is minutes away from the Central Business Districts Fort Bonifacio and Makati City. It's architectural design aims to reclaim the what a home really means to a family. The home is not only meant to provide shelter and all modern amenities, but also for harvest. The townhouse sustainably allows its homeowners to harvest food, energy, and water from nature. By allowing the house to be embedded within the natural cycles, it truly becomes a home connected to a larger sense of home: earth.

Special Features

- Atrium Skylight
- Rainwater Harvesting
- Solar Energy
- Rooftop Garden
- Dedicated Workspaces



Ground Level

- 1. 2 Carport
- 2. Guest Bathroom
- 3. Main Entrance
- 4. Living Room
- 5. Staircase
- 6. Atrium Deck
- 7. Fish Pond
- 8. Kitchen
- 9. Dining Room
- 10. Storage / Electrical
- 11. Maid's Room
- 12. Maid's Room Bathroom
- 13. Patio
- 14. Laundry



Second Level

- 1. Master's Balcony
- 2. Master's Bedroom
- 3. Master's Bathroom
- 4. Master's Walk-in Closet
- 5. Atrium
- 6. Staircase
- 7. Bathroom
- 8. Bedroom 1
- 9. Bedroom 2









Residential // 1520 sqm // Los Banos, Philippines

Architecture + Interior Design + Site Analysis + Arch Visualization

LOS BANOS REST HOUSE

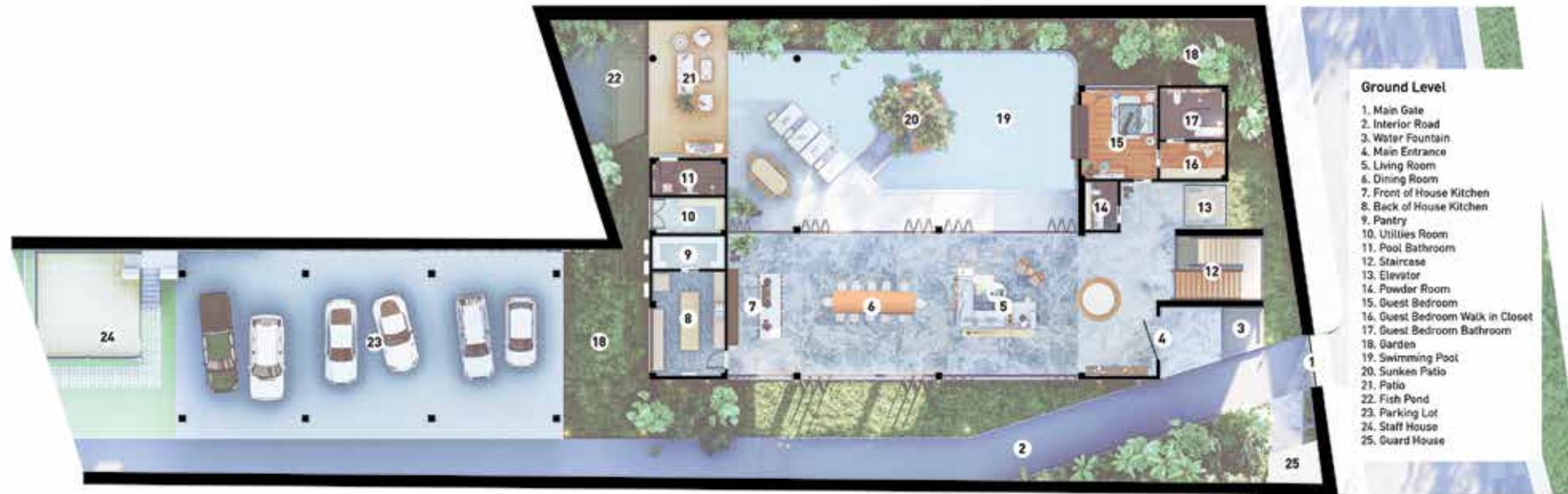
The Los Banos Rest House is situated amongst a commercial street filled with public pool resorts that make privacy a challenge. Our design aims to provide its users utmost privacy by facing the building inwards and providing balconies that act simultaneously as sun shading. Since the site is a through lot with two roads back to back, we designed the ground level to have a road that connects both gates. This allows us to narrow the lot, provide ample parking space, rid front facing parking which is an eye sore. We also designed an elevated garden on top of the parking that not only maximizes the space but also provides a great view facing the mountain on the rear side of the lot. For the pool design, we provided an organic shape, with a sunken lounge, waterfall and adjacent biophilic wall. We also designed wide steel window ledge that provides lounge seating with pool view and also additional sun shading.

By moving all vertical movement to the front side of the building, we are able to slow down the pace of movement for the rest of the property. Programs and rooms are carefully planned based on levels of privacy and energy. More public and high energy rooms are located at the front, while all the bedrooms are placed at the back.

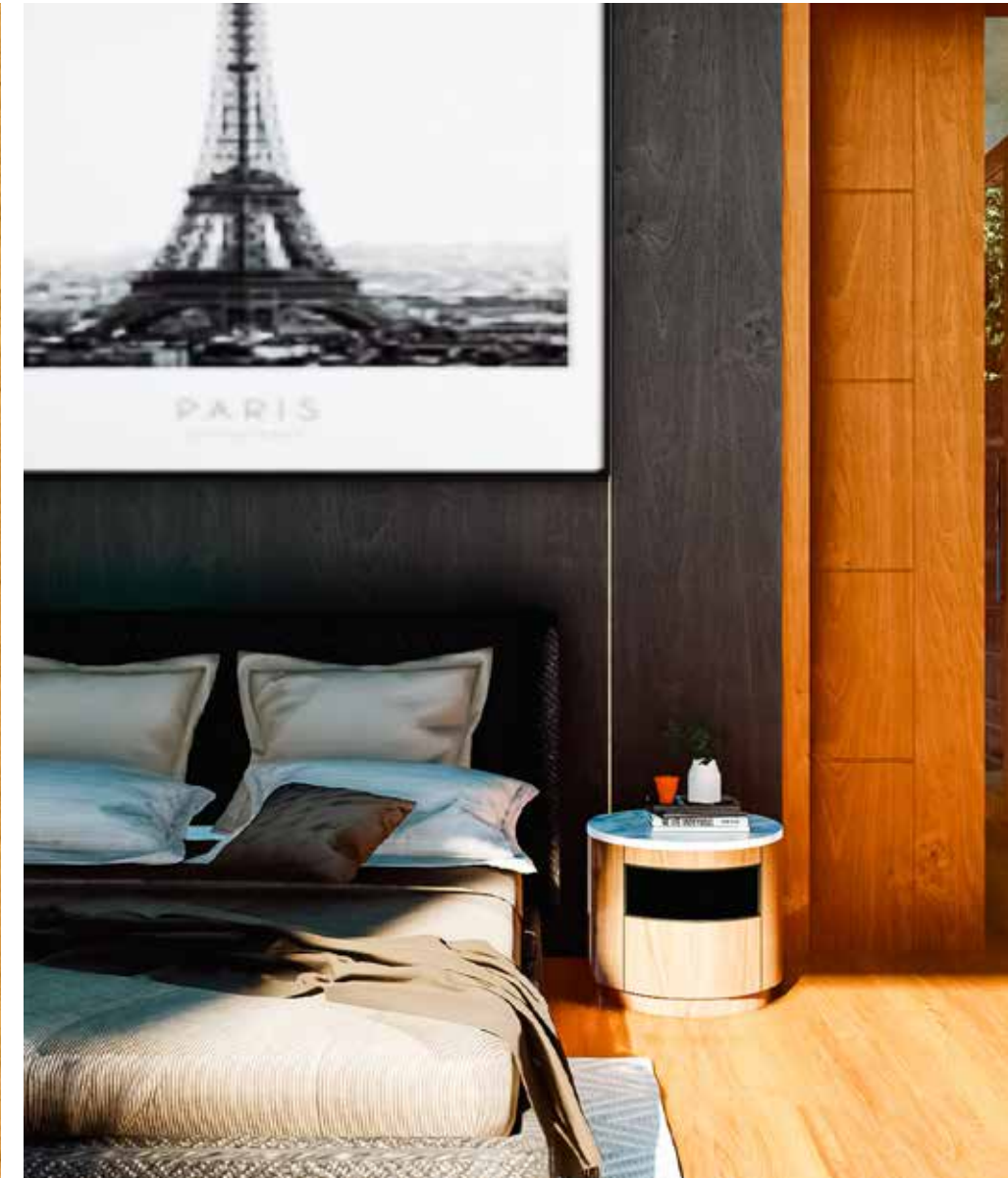
Special Features

- Plant-filled Balcony Enveloped Façade
- Double Height Living Space and Dining Space
- Elevated Garden
- Greenwall
- Pool with Waterfall Feature











**Residential // 770 sqm // Sta. Rosa, Philippines**

Architecture + Interior Design + Site Analysis + Arch Visualization

INDOOR FOREST HOUSE

The Indoor Forest House is a love letter to nature and its inhabitants. The design merges geometries based on optimal views, privacy, and natural light. It is a site specific building with a genius loci. It provides its users a sense of awe using very high vaulted ceilings and large window apertures, which strategically face the luscious forests around the site. The design also provides multi-layered interesting spaces that are generated by the overlapping volumes. The pool is situated at the back of the property to help diffuse and reflect the harsh north eastern light. It also acts as a natural cooling mechanism lowering the overall temperature of the house. The additional waterfall design provides a flexible visual barrier when needed.

Special Features

- Rainwater Harvesting
- Solar Energy
- Indoor Forest Garden
- Elevated Greenhouse
- Rooftop Garden
- Pool with Waterfall Feature





Basement Level

- 1. Ramp
- 2. 4 Carport
- 3. Staircase to Ground Level
- 4. Drivers Toilet
- 5. Drivers Room
- 6. Maids Toilet
- 7. Maids Room
- 8. Woodshop
- 9. Studio Workshop
- 10. Laundry Room
- 11. Water Room
- 12. Electrical Room
- 13. Swimming Pool



Ground Level

- 1. Main Entrance
- 2. Guest Toilet
- 3. Pantry
- 4. Kitchen
- 5. Dining Table
- 6. Living Room
- 7. Staircase to Basement
- 8. Indoor Garden Living Room
- 9. Staircase to Second Level
- 10. Fire Pit
- 11. Swimming Pool
- 12. Pool Deck
- 13. Guest Bedroom / Multipurpose Room
- 14. Pool Shower
- 15. Guest Bathroom



Second Level

- 1. Office
- 2. Staircase to Upper Level
- 3. Guest Toilet
- 4. Pantry
- 5. Den
- 6. Master's Bedroom
- 7. Master's Balcony
- 8. Master's Walk-in-Closet
- 9. Master's Bathroom
- 10. Greenhouse
- 11. Bedroom 2
- 12. Bedroom 2 Closet
- 13. Bedroom 2 Bathroom
- 14. Bedroom 1
- 15. Bedroom 1 Closet
- 16. Bedroom 1 Bathroom



Third Level

- 1. Solar PV Panels
- 2. Skylight











Residential // 137 sqm // Makati, Philippines

Interior Design + Arch Visualization

4916 ENRIQUE ST. TOWNHOUSE

The original house was built in the 1960s and divided into four different apartment units. The owner decided to combine units into one unit. Since there is only one facade that has access to natural light, it was a challenge to bring in natural light in the interiors of the house. We designed multiple light and air wells to provide not only airflow but also natural light to all spaces inside.

In respect to the history of the house, we opted for an industrial Filipino interior concept.

Special Features

- Adheres to owner's strict hygiene protocols.
- Indoor garden and patio.
- Directed passive airflow.
- Multiple atriums and skylight that increases sense of space and maximizes natural light.
- Rainwater waterfall and harvesting system.
- Multi-purpose dining table that converts to ping pong table.





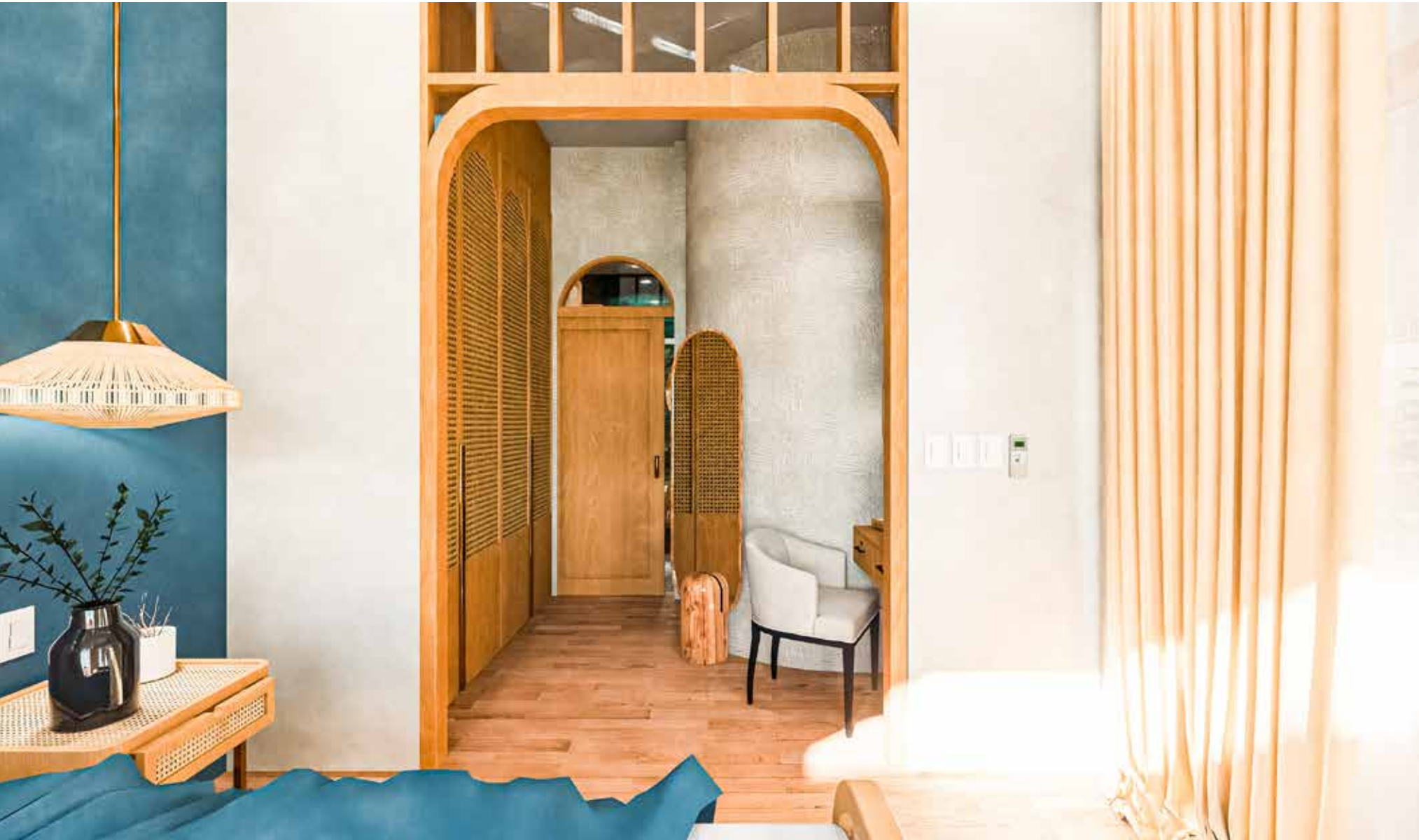


















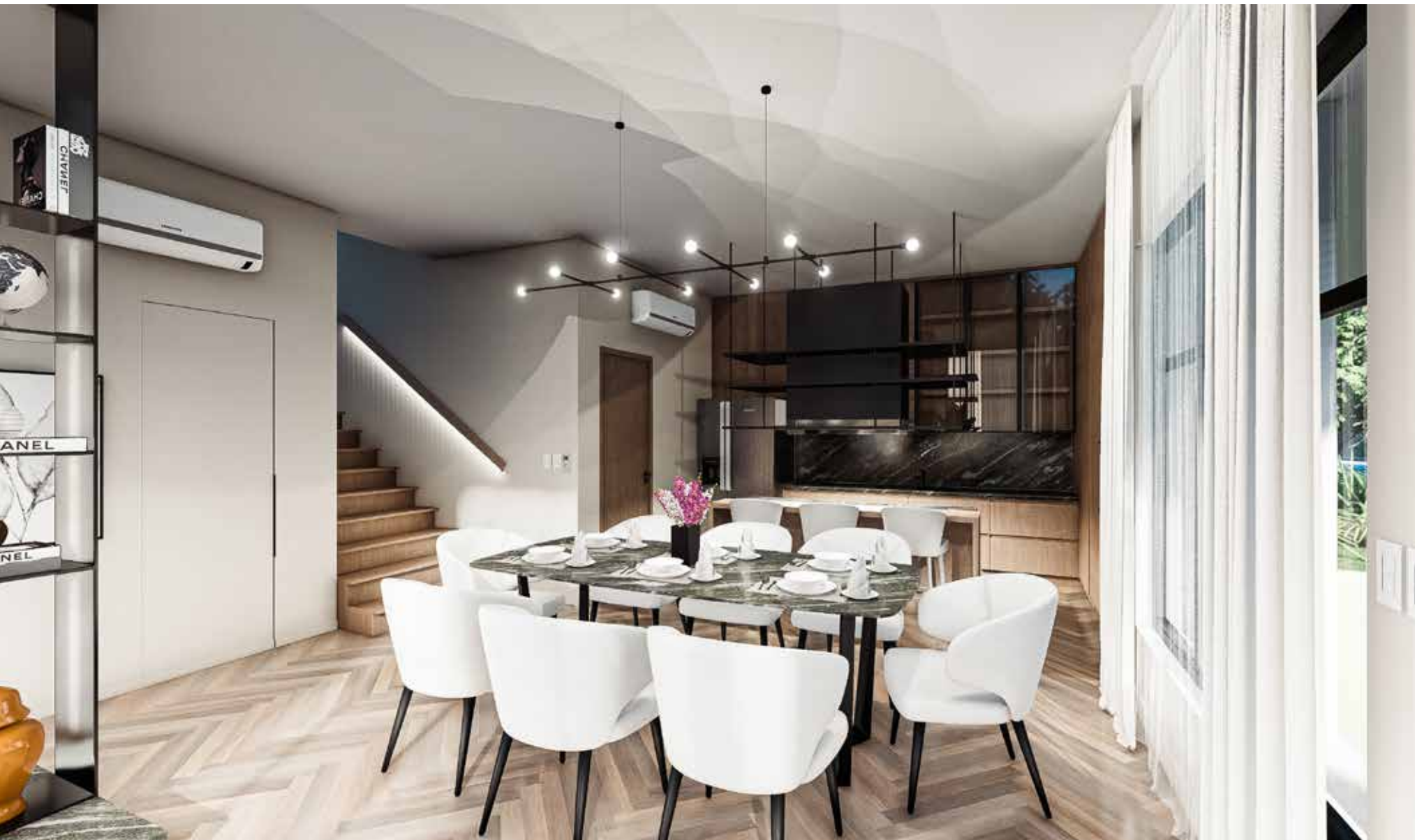
Residential // 143 sqm // Tagaytay City, Philippines

Interior Design + Arch Visualization

RIDGEWOOD HEIGHTS TAGAYTAY - MODEL UNIT

Ridgewood by 5R Prime Properties offers a quality lifestyle in a nature driven subdivision that combines the best attributes of a primary residence and a vacation home with its year-round cold and misty weather.

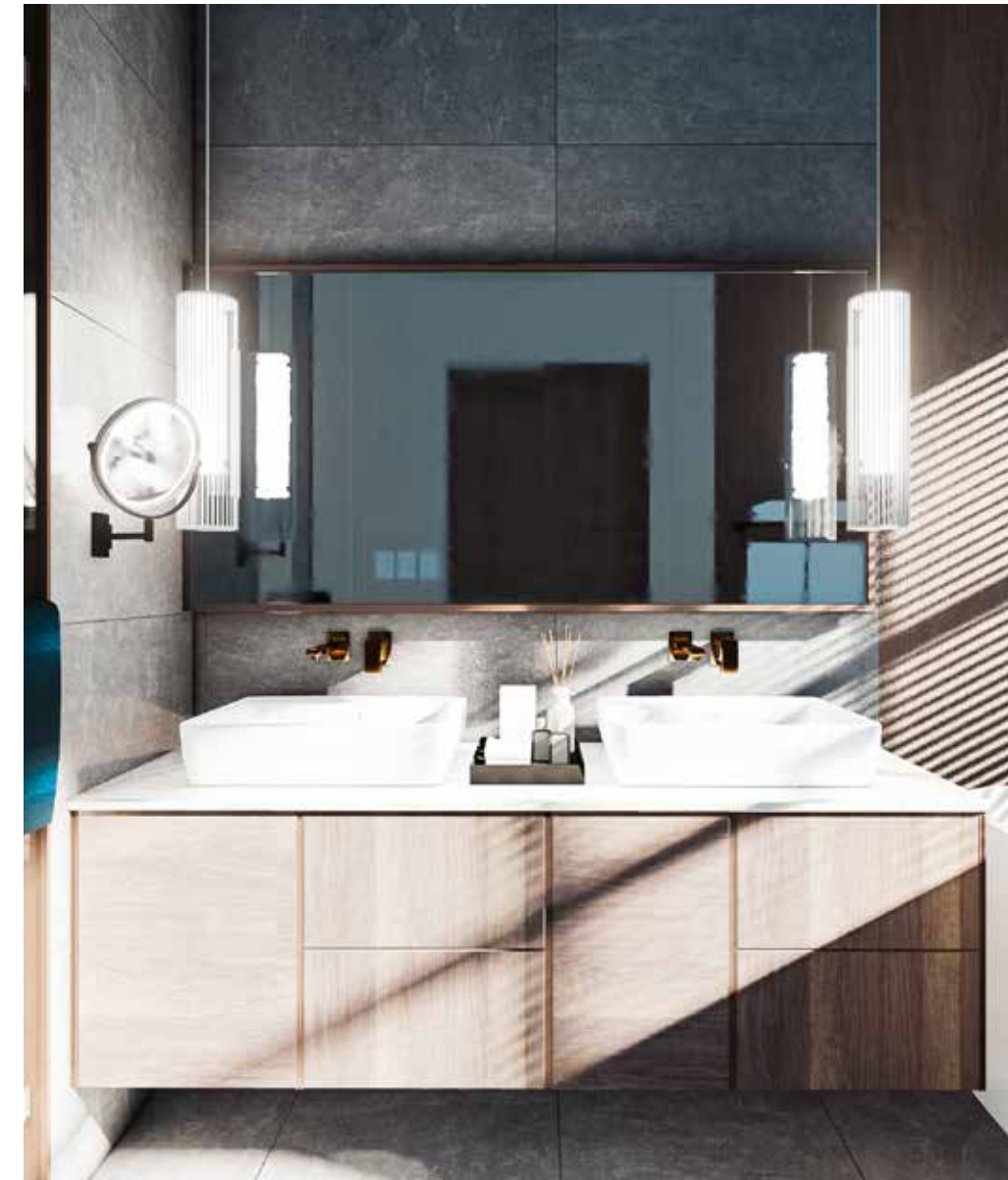
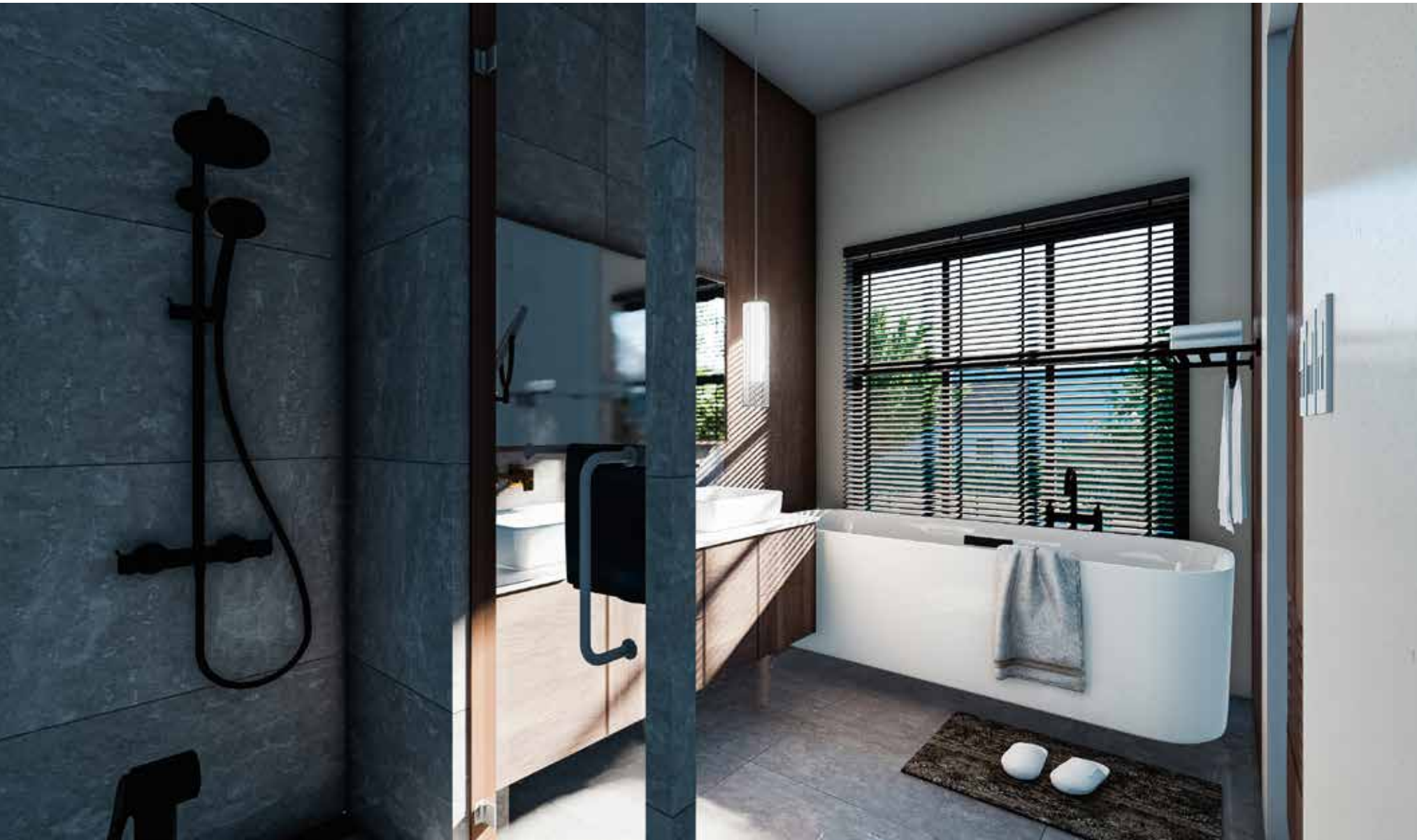
















Residential // 206 sqm // Quezon City, Philippines

Interior Design + Arch Visualization

BALATE SKYLINE APARTMENT

The goal for this interior renovation is to renovate a ten-year-old three-bedroom apartment into a long-term home for a soon to be wed young couple. They envision their space to be a getaway from the hustle and bustle of everyday life wherein they can start a family. The concept started with the key phrase from the client "Modern Monestary".

















Commercial // 60 sqm // Baguio City, Philippines

Interior Design + Arch Visualization

BAGUIO AIRBNB

This one bedroom apartment original only had one access to natural light through the bedroom window, leaving the living room in the dark. By the careful use of sliding glass doors and an open floorplan, light now shines throughout the apartment. Flexible apartment provides endless possibilities for its guests, which focuses on social interactions.







Commercial // 13 hectare // Calamba City, Philippines

Masterplanning + Architecture + Interior Design + Arch Visualization

CACAO RESERVE HOTEL

Cacao Reserve Farm House is a 13 hectare property that aims to be a unique agritourism destination. The rarest and most expensive type of cacao: Creolo, is planted all across the property. The resort will be equipped with a café/reception/workshop/giftshop, homestay farm house, genetic tissue culture lab, nursery, cacao fermentation and sun drying, spa, distillery, teahouse, event space, and staff housing.

For the Homestay Farm House, we designed a very modern building with traditional Filipino form and elements. The use of stone harkens back to old colonial typographies while the steel allows for larger span and large light apertures. The farm house is designed to be a gathering place for everyone staying in the elevated guesthouses and is equipped with reception, kitchen, dining space, library, gym, guest room, laundry room, and staff lounge. Adjacent to it is the large organic shaped swimming pool that has an elevated lounge, jacuzzi, and bar.

The farm house is connected to the elevated guesthouses via a network of bridges on top of a working aquaponic fish pond. We designed the elevated guesthouses to have as little impact on the top soil and natural landscape of the property. It also provides optimal access to views and fresh air. We designed both a three-bedroom and two-bedroom with a living room typology.







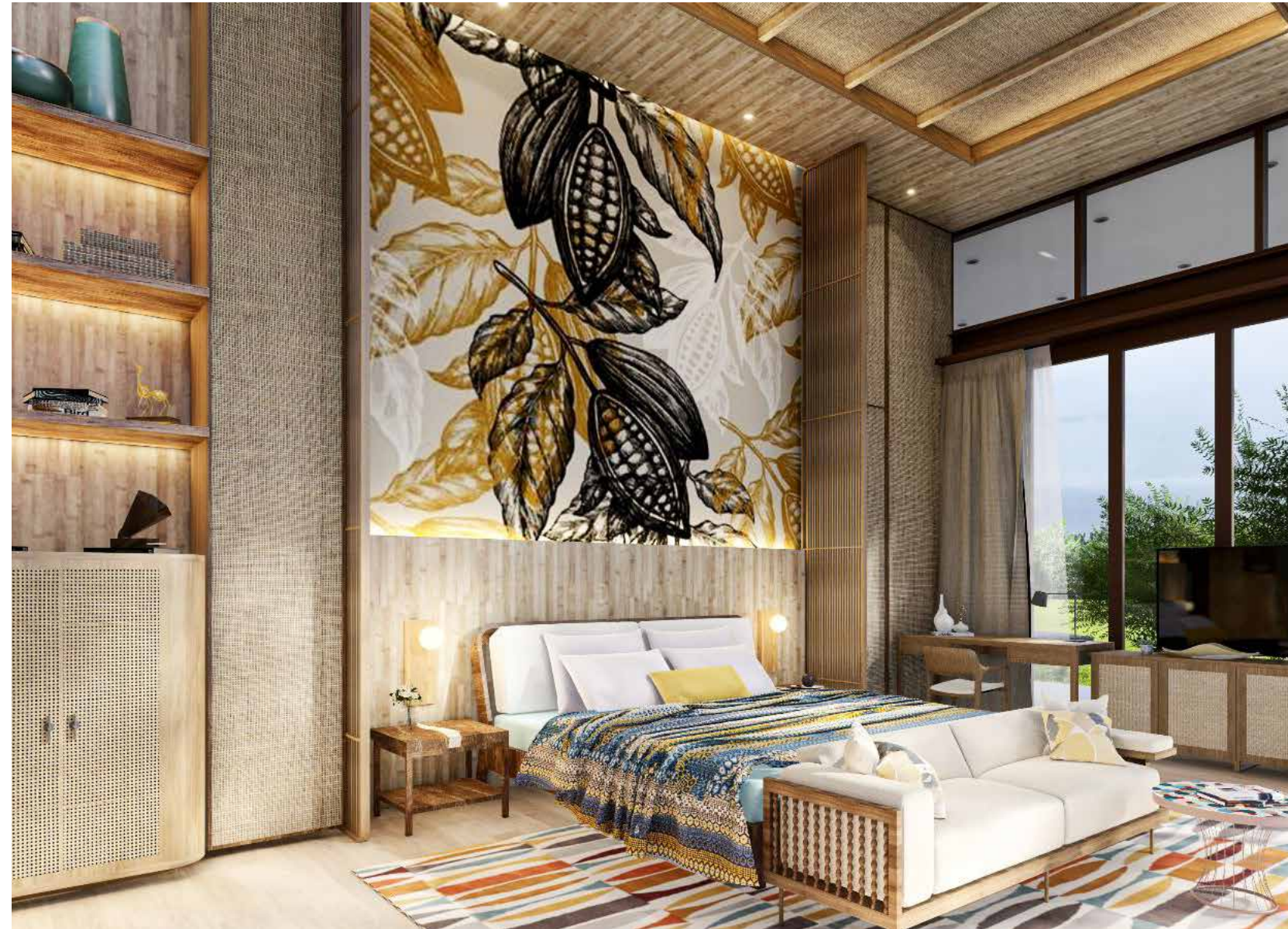
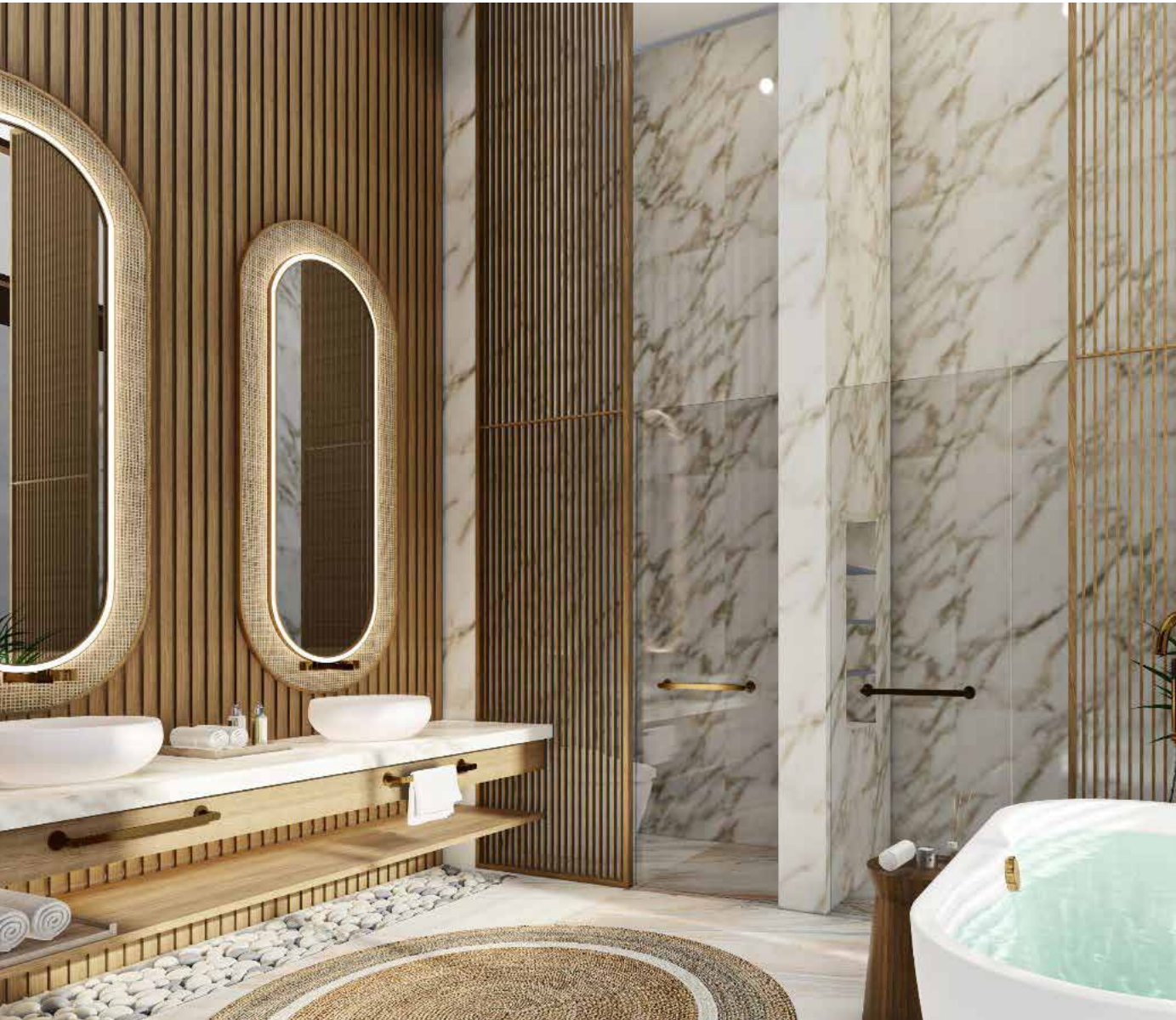
Ground Level

- 1. Main Entrance Steps
- 2. Main Entrance Ramp
- 3. Main Entrance Garden
- 4. Lobby
- 5. Guest Bedroom
- 6. GBR Walk in Closet
- 7. GBR Bathroom
- 8. Guest Bathroom
- 9. Male Staff Bedroom
- 10. Male Staff Bathroom
- 11. Utilities Room
- 12. Female Staff Bedroom
- 13. Female Staff Bathroom
- 14. Pantry and BOH Kitchen
- 15. Main Open Kitchen
- 16. Dining
- 17. Living Room
- 18. Patio Deck
- 19. Bar and Barbeque
- 20. Swimming Pool
- 21. Jacuzzi
- 22. Lawn
- 23. Trampoline
- 24. Swing Gazebo
- 24. Pond Walkway
- 25. Fish Pond
- 26. Staircase
- 27. Halfcourt Basketball Court



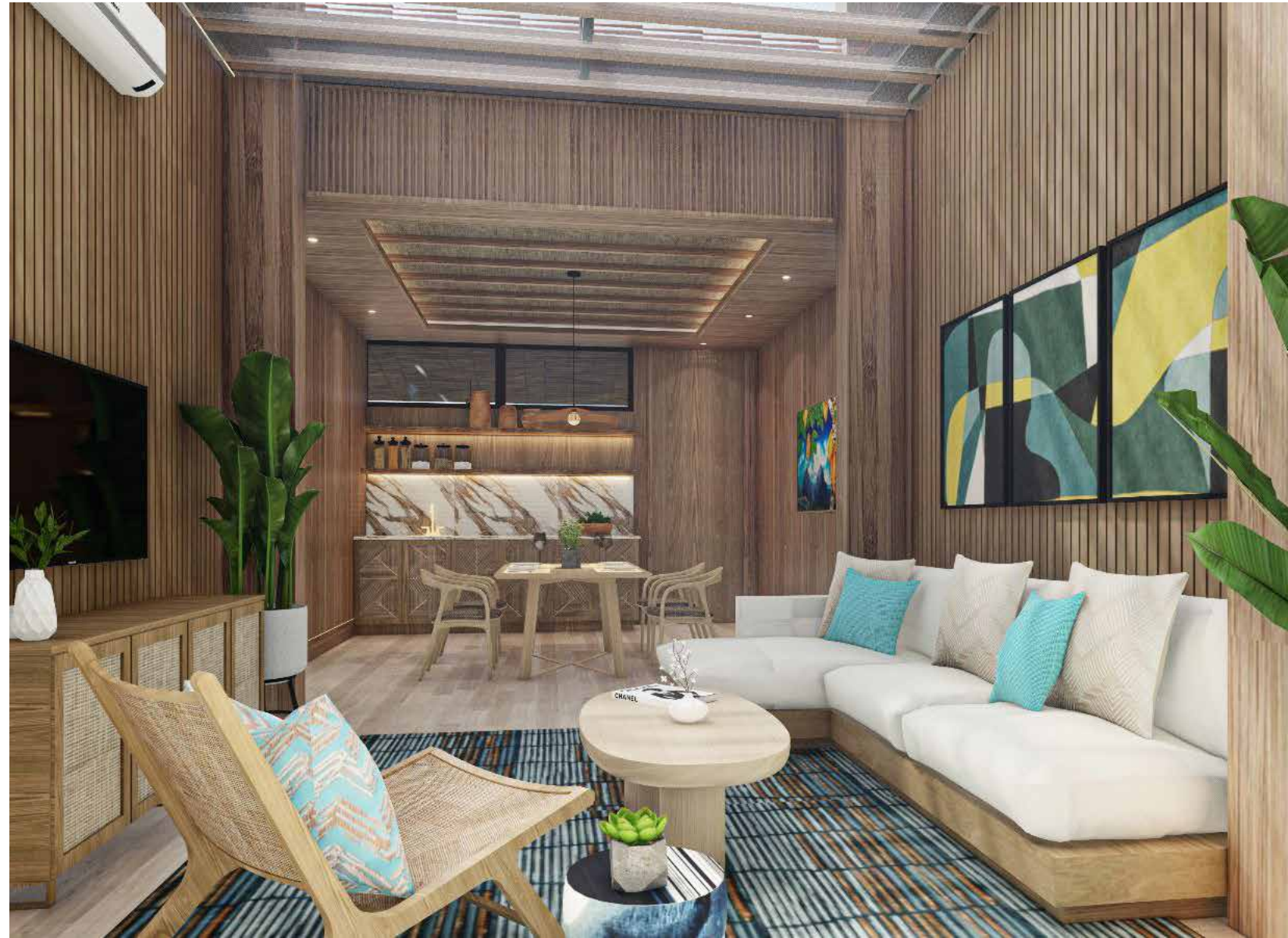
- Second Level**
- 1. Staircase
 - 2. Living / TV Room
 - 3. Viewing Deck
 - 4. Pantry
 - 5. Library
 - 6. Gym
 - 7. Bridgeway
 - 8. Treehouse Dining
 - 9. Treehouse Kitchen
 - 10. Treehouse Living
 - 11. Treehouse BR1
 - 12. Treehouse BR1 WIC
 - 13. Treehouse BR1 Bathroom
 - 14. Treehouse BR2
 - 15. Treehouse BR2 WIC
 - 16. Treehouse BR2 Bathroom













Commercial // 175 Rooms // Philippines

Interior Design + Arch Visualization

SEDA HOTEL

Seda is a Philippine brand of hotels owned and operated by Ayala Land Hotels and Resorts, a subsidiary of Ayala Corporation. The first hotel under the Seda brand began operations in 2012 with the opening of Seda BGC. They now have 14 hotels nationwide and are in continuous expansion.

They have tasked PINO Design Studio to redesign the brand of Seda which includes their interiors. As part of the first phase of the project, we were tasked to redesign their rooms. With the concept of "Filipino Hospitality" we integrated traditional and modern Filipino design elements while maintaining efficiency and ease of maintenance. Our aim is to make Seda the quintessential Filipino hotel.









Commercial // 2,100 sqm // Pasay City, Philippines

Architecture + Interior Design + Arch Visualization + Kitchen Consultancy

LUFTHANSA TECHNIK

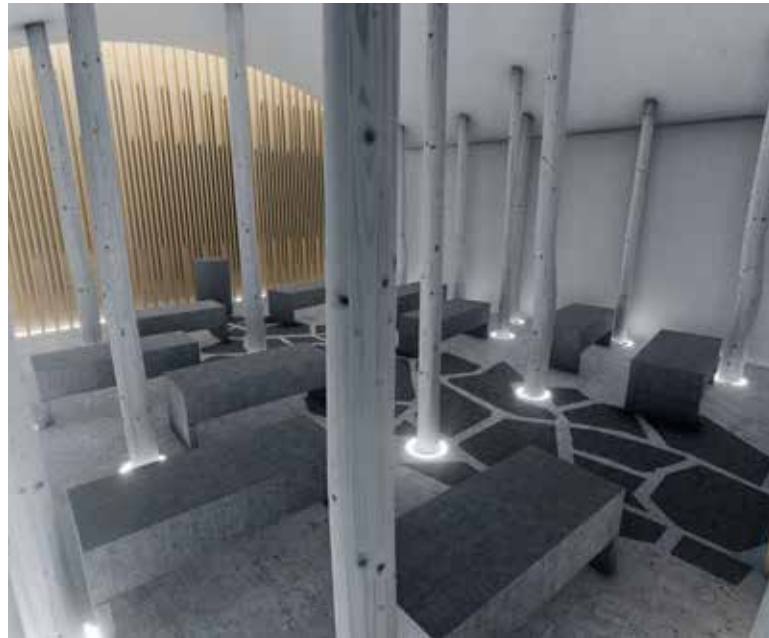
For their 20th year anniversary in the Philippines, Lufthansa Technik tasked us to design their spaces to not only reinforce their new brand directions but also to provide their employees with a sense of professionalism. The three areas that we focused on were the staff canteen, recreational center, and worship hall. These are key areas in reinforcing a brand's culture.

The staff canteen was last renovated 8 years ago and is in dire need of a refresh. Our design reflects Lufthansa's brand of taking care of their own employees. Their deeply rooted values of integrity, excellence, and success are embodied in our design by providing high quality spaces and an uplifting dining experience. For the concept, we chose a modern industrial palette based on their brand guidelines. It also provides an effective system to the space while giving the feeling of openness with the use of light finishes and an open plan.

To provide their staff a more balanced lifestyle, Lufthansa Technik aimed to construct a recreational room. Our design focuses on fostering social and mental health for employees. For the programs, we chose activities that are very popular with Filipinos including basketball, karaoke, and billiards. We also designed a unique wall decal that strengthens the branding within the space.

The design for Lufthansa Technik's worship hall is a nondenominational chapel that caters to all different types of religion within the company. It focuses on providing employees a sense of faith by providing a space of respite and silence. The concept is derived from the Black Forest of Germany.







Commercial // 244 sqm // Pasig, Philippines

Interior Design + Arch Visualization

HCT CLINIC DIALYSIS CENTER

The HCT Renal / Dialysis Center in Pasig aims to provide patients premium dialysis services within a modern and comfortable atmosphere. It will be the first of its kind in the Philippines.

Special Features

- Adheres to Department of Health's strict guidelines.
- Hygienic and easy to clean / maintain surfaces.
- Optimizes use of branding to provide seamless customer experience.
- Curved surfaces and plants provide patients a calming experience.
- Optimal efficiency in terms of operational flow of spaces.



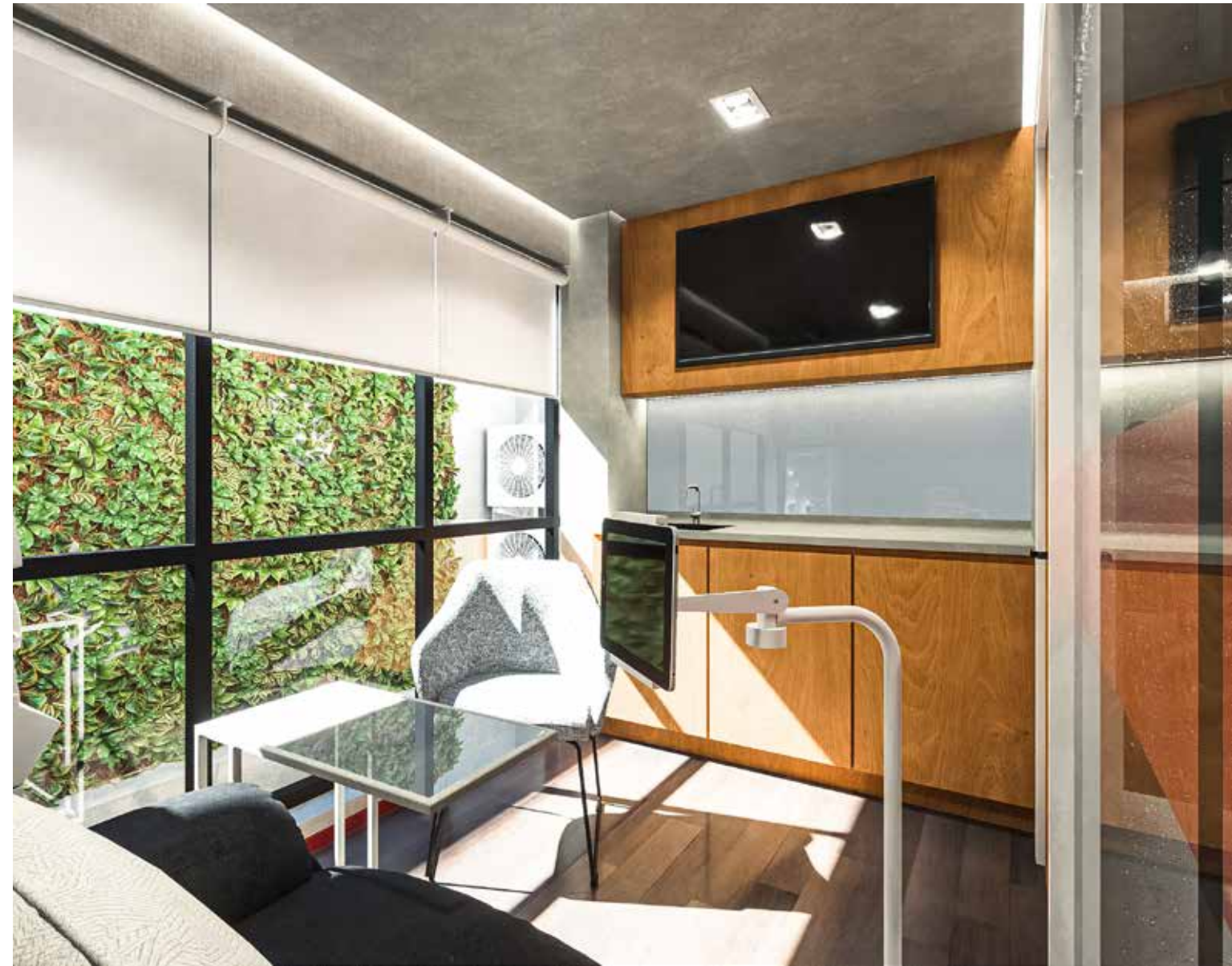
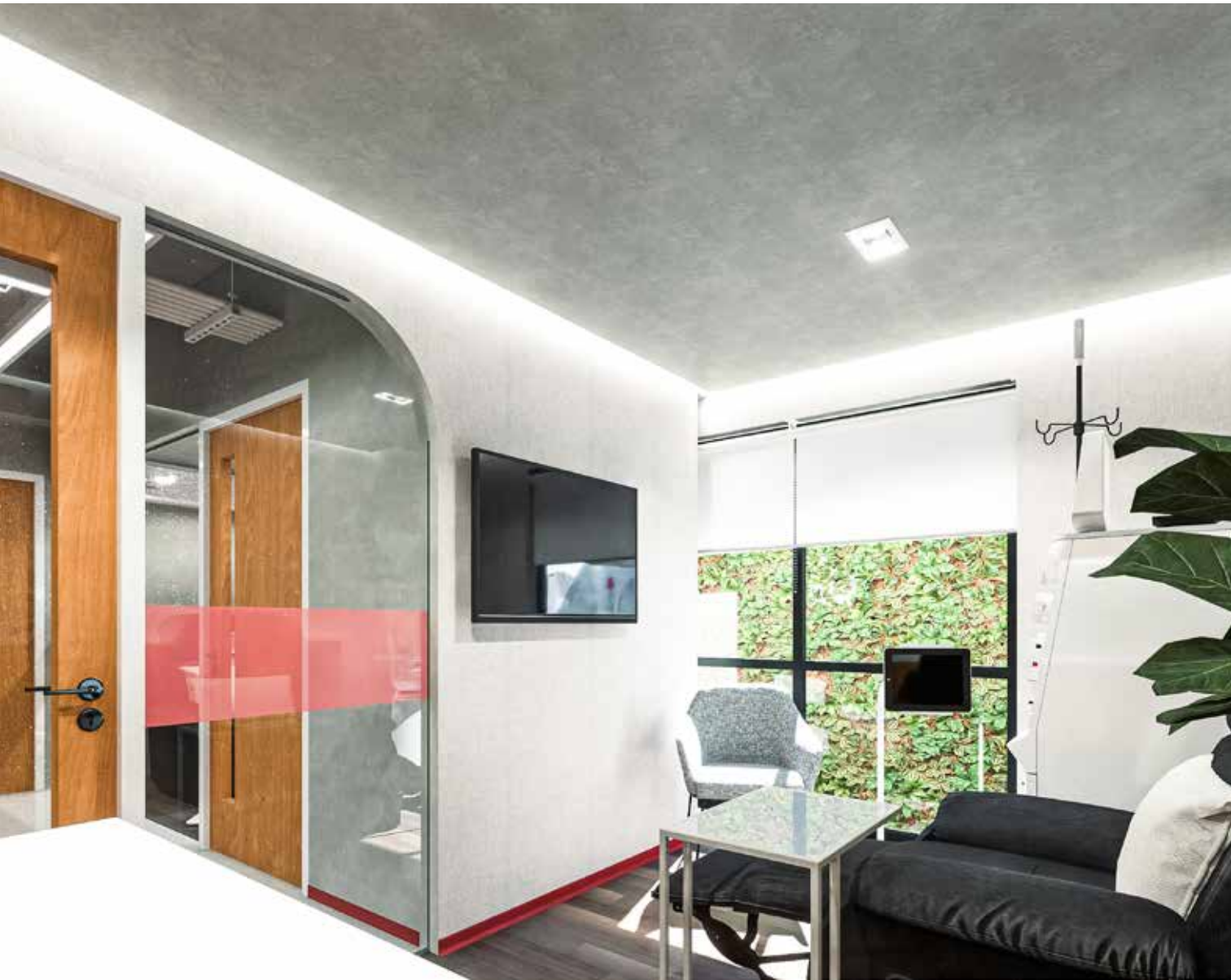














Commercial // 1,392 sqm // Makati City, Philippines

Architecture + Interior Design + Arch Visualization + Kitchen Consultancy

FABTECH HEADQUARTERS MAGALLANES

The Fabtech Headquarters is designed to house the 11 different companies within the Fabtech Group of Companies. Since the building is located right beside the EDSA and Sergio Osmena intersection which produces a lot of pollution, Fabtech Headquarters is designed to not only be sustainable but to be regenerative. The architecture aims to have a net positive carbon footprint. This is achieved with solar harvesting, rain water harvesting, passive lighting and ventilation, ample vegetation, and closed loop systems.

This 14-storey building aims to be a living machine that provides its tenants and users maximum comfortability and efficiency. The higher floors are designed with vertical courtyards, scaling two-story voids, which extends the workplace into a series of landscaped terraces. Including the vegetation rich wrap around balcony that envelops the entire building, there is ample green spaces that are designed to not only be environmentally friendly but also provides users with relaxation and unique meeting places.

Special Features

- State-of-the-art Staff Canteen
- AURO Chocolate Cafe Lobby Lounge
- Stepped Seating Al Fresco / Ampitheater
- Play-based Preschool
- Rooftop Bar
- Wrap Around Balcony with Vegetation
- Basketball Court and Gym
- Net Positive Carbon Footprint



ROOFTOP

- Rooftop Bar
- Rooftop Green House

LEVEL 11-12

- Basketball Court
- Gym
- Clinic
- Locker Rooms
- Dance Studio

LEVEL 10

- PINO Design Studio Office
- PINO Photo Studio

LEVEL 9

- AURO Chocolate Office

LEVEL 7 - 8

- Fabtech Office

LEVEL 7

- Multipurpose Conference Rooms

LEVEL 6

- Preschool

LEVEL 5

- Parking
- Preschool Entrance / Teachers Office / Auditorium

LEVEL 3 - 4

- Parking

UPPER GROUND LEVEL

- Culinary Classroom
- Fabtech Showroom
- Staff Canteen
- Meeting Rooms

GROUND LEVEL

- Lobby / Lounge
- Meeting Rooms
- AURO Chocolate Cafe
- Gruppo Dolci Commissary
- Staff Canteen
- Central Atrium Garden
- Step Seat Auditorium

BASEMENT 1

- Green Point Refrigeration Services Office / Workshop
- Fabtech Service Office / Workshop
- Gruppo Dolci Office / Storage
- Locker Rooms
- MEPF Rooms



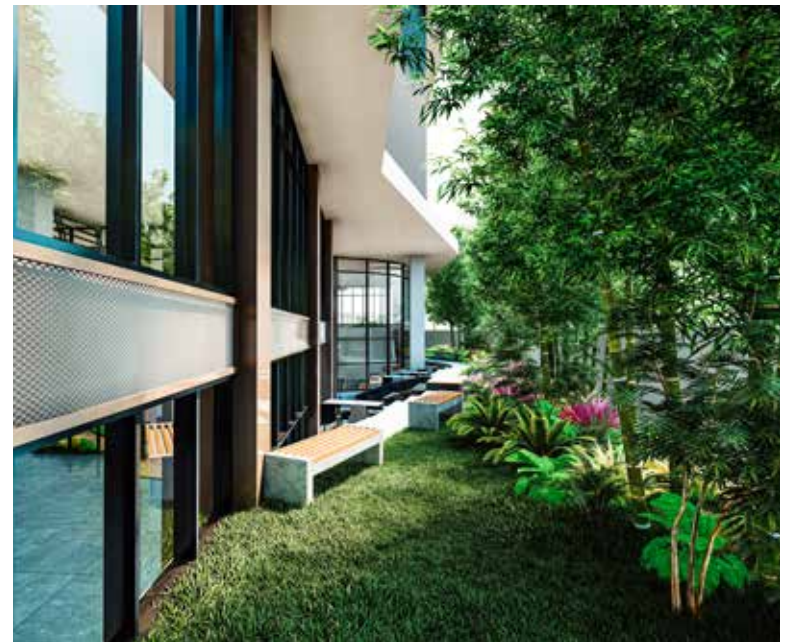
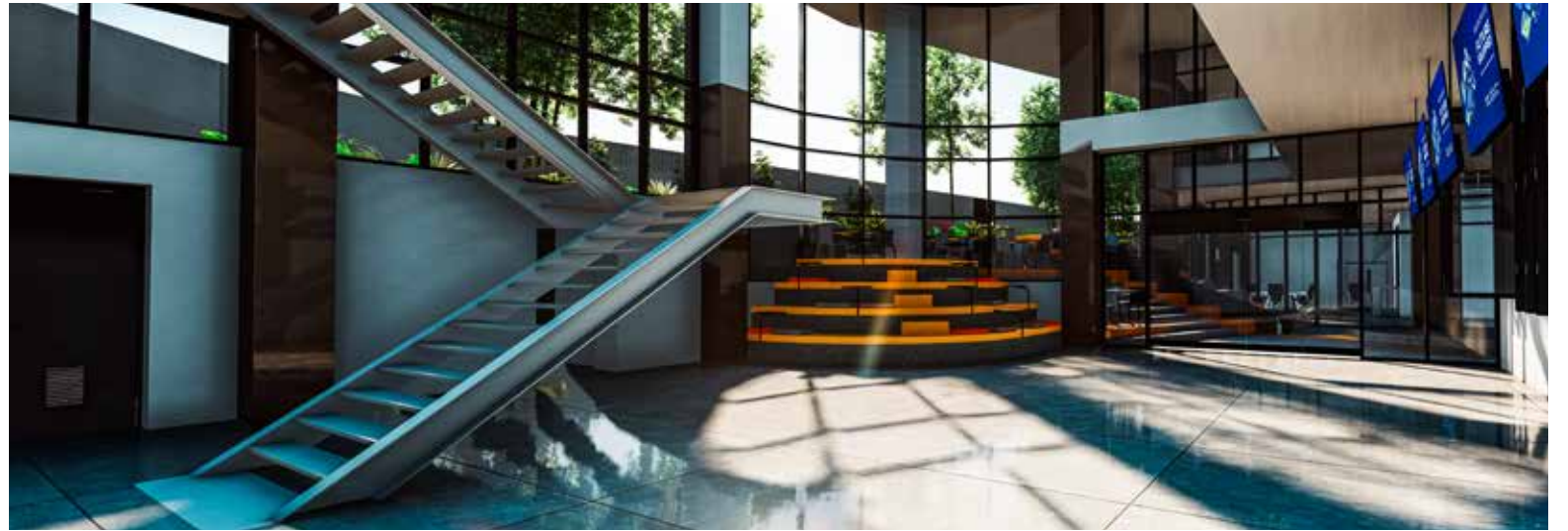
PINO PLACES

2023



FABTECH HEADQUARTERS MAGALLANES









Commercial // 65 sqm // Pasay City, Philippines

Architecture + Interior Design + Arch Visualization + Kitchen Consultancy

FABTECH WOFEX 2023 BOOTH

The Fabtech WOFEX 2023 booth was designed to be built in just two days. It is composed of modular steel frame members that can be assembled with ease. Instead of the traditional plywood booths that are thrown away after the event, the Fabtech WOFEX 2023 booth is designed to be reusable, whilst lowering its overall cost.

The booth is also design with the Fabtech experience in mind. We wanted to provide the event participants a unique and all-encompassing experience of Fabtech from design, kitchen equipment, ingredients, to services. This was accomplished by segmenting each concept to its individual booth whilst maintaining an overarching and cohesive brand experience.





Retail // 252 sqm // Taguig City, Philippines

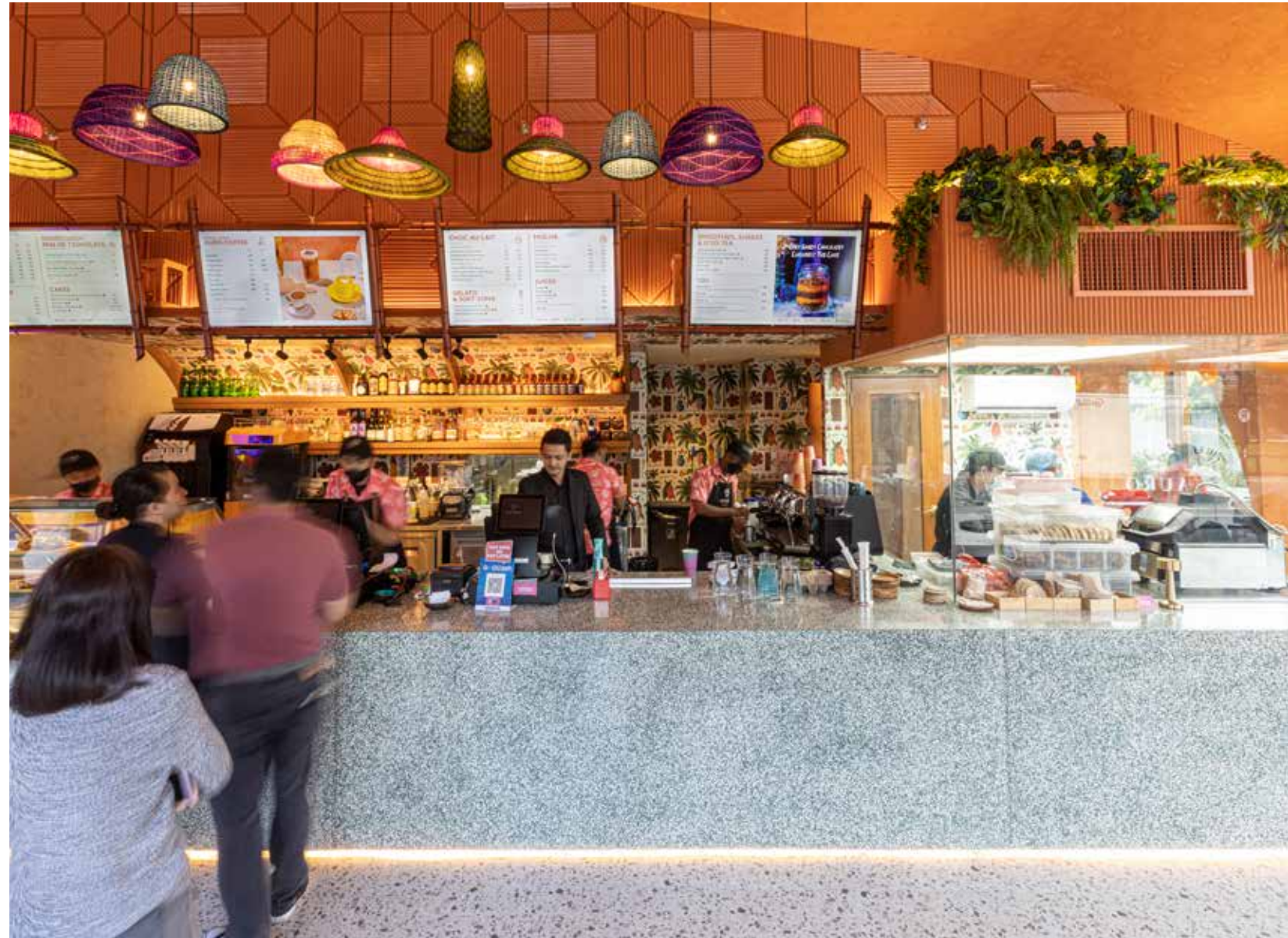
Interior Design + Kitchen Consultancy

AURO CAFE BGC

The AURO Cafe BGC is designed to showcase its brand and emphasize the Filipino heritage that the brand proudly celebrates.

Auro Chocolate is an award winning, proudly Filipino bean-to-bar company that produces fine cacao and chocolate made from directly sourced beans from Mindanao farming partners. Since 2018, they have focused on export and wholesale. They have not had a retail presence in the Philippines. The aim for the pop up store is to further reach their target audience and increase their market presence.







AURO
CHOCOLATE







Retail // 82 sqm // Manila City, Philippines

Interior Design + Kitchen Consultancy

AURO CAFE TAFT

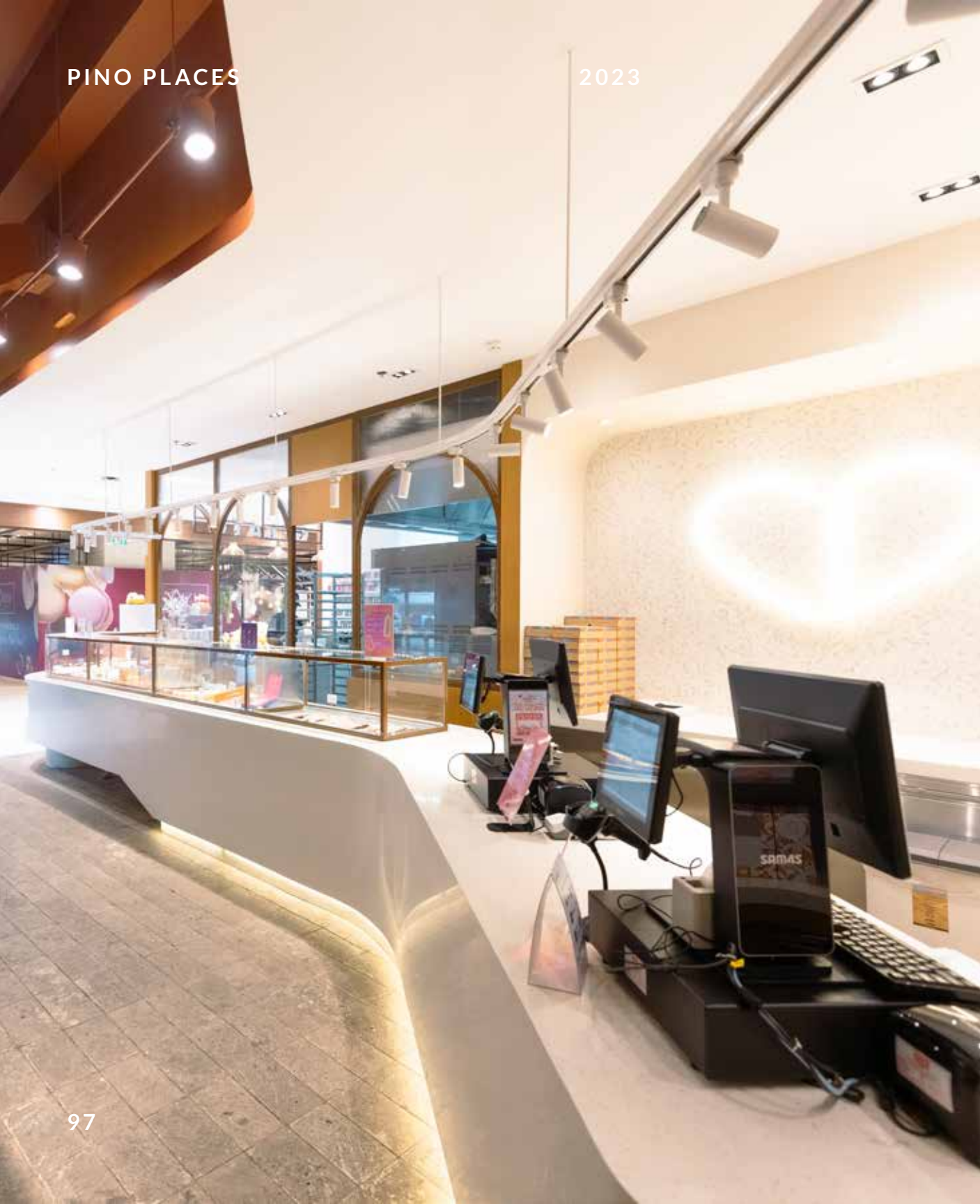
The AURO Cafe Taft is designed to showcase its brand and emphasize the Filipino heritage that the brand proudly celebrates.

Auro Chocolate is an award winning, proudly Filipino bean-to-bar company that produces fine cacao and chocolate made from directly sourced beans from Mindanao farming partners. Since 2018, they have focused on export and wholesale. They have not had a retail presence in the Philippines. The aim for the pop up store is to further reach their target audience and increase their market presence.









Retail // 76 sqm // Taguig, Philippines

Interior Design + Arch Visualization + Kitchen Consultancy

THE BAKERY BY CAFE DOLCI

The Bakery is a joint venture concept by Café Dolci and Isetan Mitsukoshi. It acts as the bakery extension of the largest Japanese chain of supermarkets. The design concept is a fusion of Japanese and European styles, which represents the selection of products such as breads, pastries, sandwiches, and gelato. The design of the space subdivides the area into different unique concepts while maintaining the flow of the user experience.

We designed a floating showcase for the main display of the products to provide emphasis on the Spanish tiles used for the flooring. It also minimizes the visual barriers between the producer and the buyer.









Retail // 330 sqm // Taguig City, Philippines

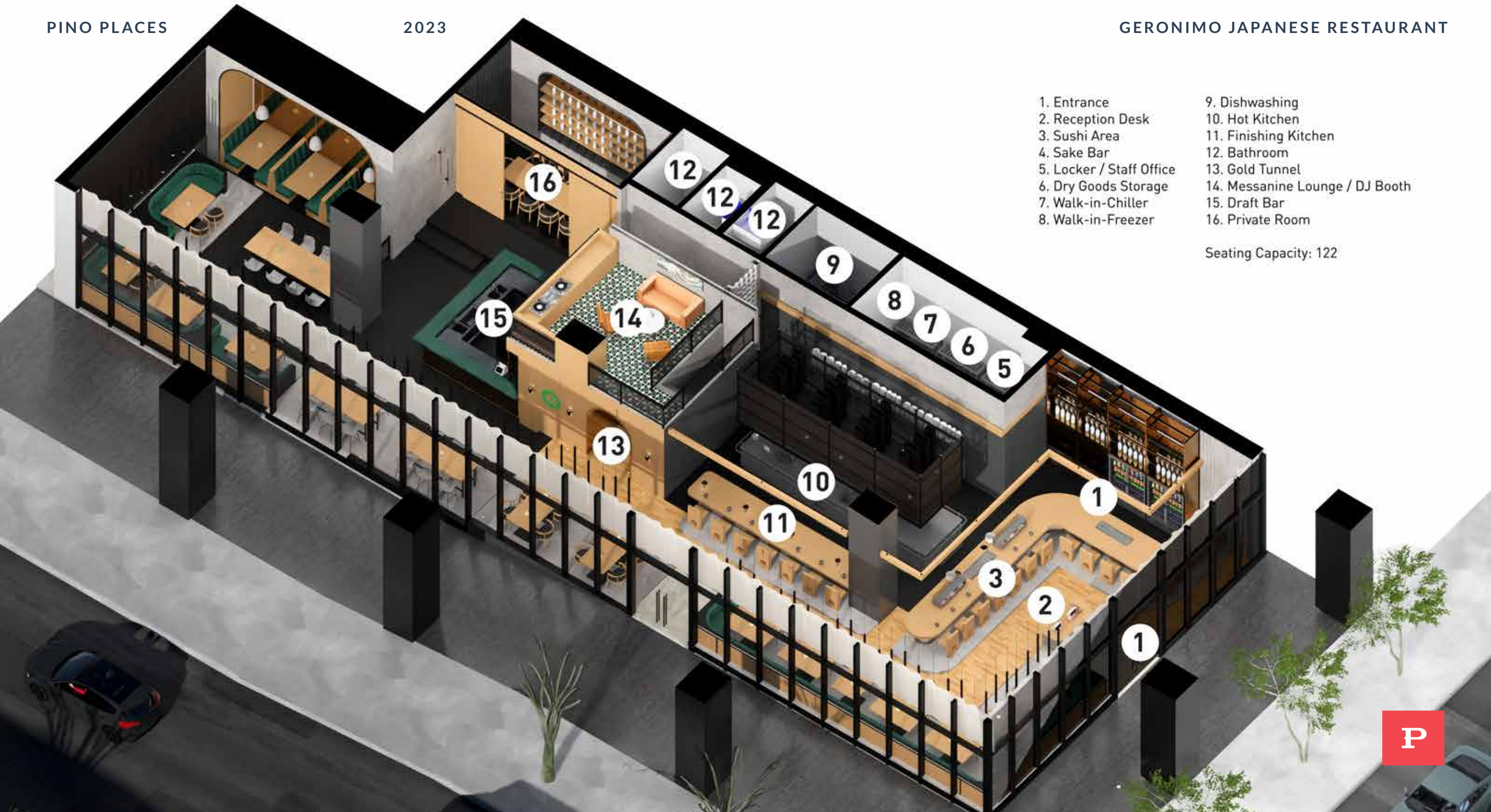
Interior Design + Arch Visualization + Kitchen Consultancy

GERONIMO JAPANESE RESTAURANT

The Geronimo Japanese Restaurant aims to be the go to destination within BGC for Izakaya. It aims to have a young and hip atmosphere that attracts a wide demographic. Due to the high ceiling of 4.2 M, we designed the restaurant to have different levels which create a variety of unique spaces. The design uses three main materials that allow us to play with different types of reflections: wood, stone, and bronze. The differing materials were carefully composed to allow each to express its individuality, yet merge to form a calm and unified space. Furthermore, the kitchen was carefully designed with the chef/owner to make sure that it is as efficient as possible.

Special Features

- Open Kitchen
- Private Room
- Cocktail Draft Bar
- Messanine Top DJ Booth



- 1. Entrance
- 2. Reception Desk
- 3. Sushi Area
- 4. Sake Bar
- 5. Locker / Staff Office
- 6. Dry Goods Storage
- 7. Walk-in-Chiller
- 8. Walk-in-Freezer
- 9. Dishwashing
- 10. Hot Kitchen
- 11. Finishing Kitchen
- 12. Bathroom
- 13. Gold Tunnel
- 14. Mezzanine Lounge / DJ Booth
- 15. Draft Bar
- 16. Private Room

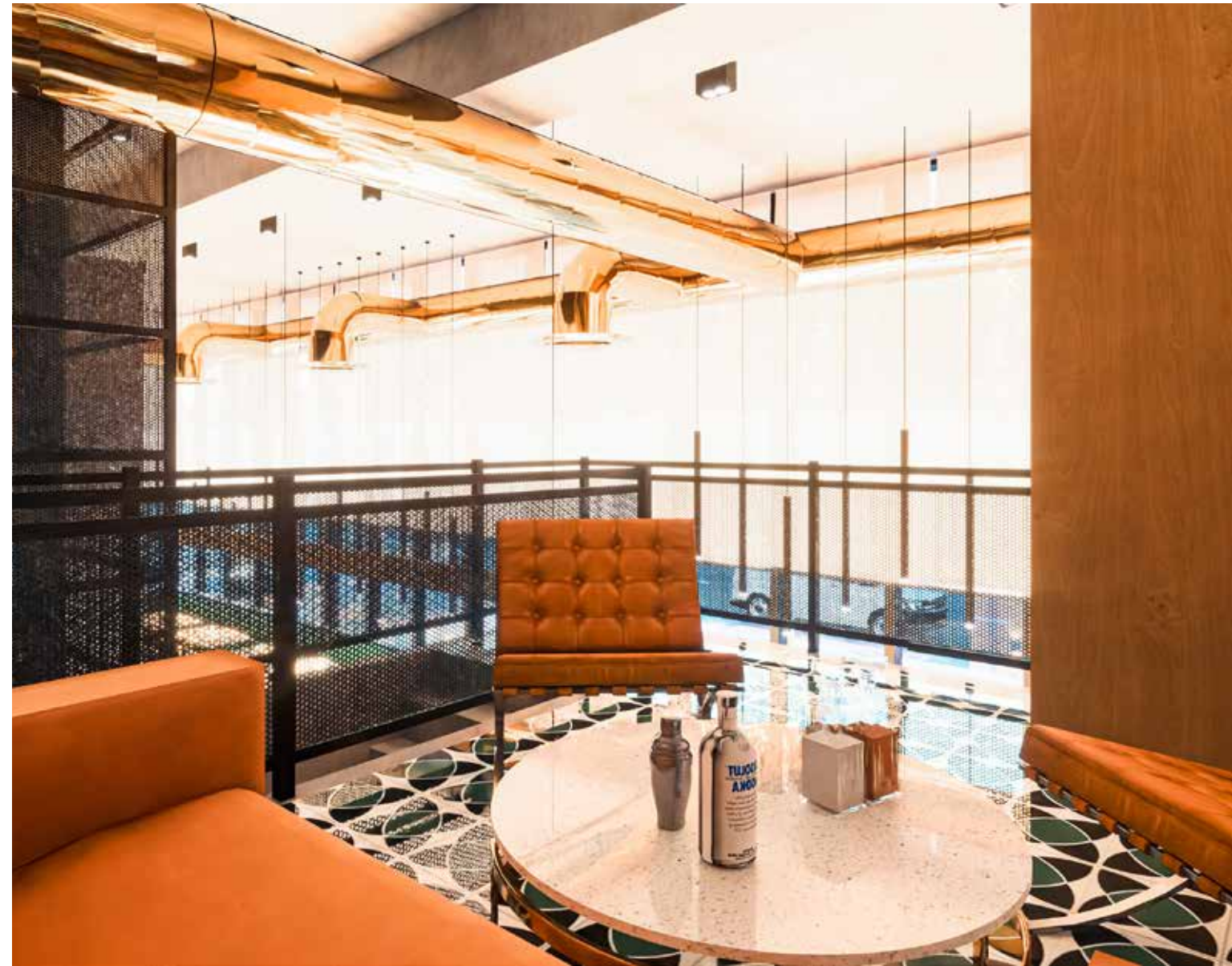
Seating Capacity: 122

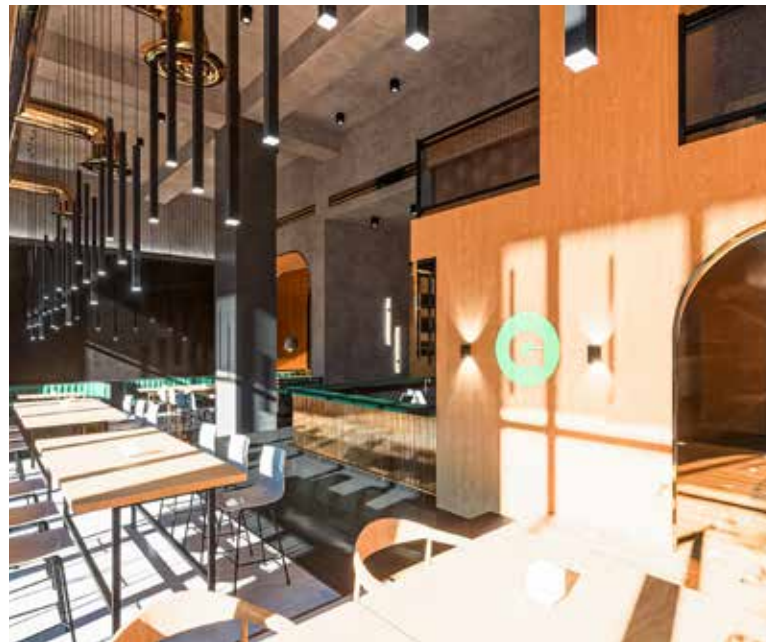




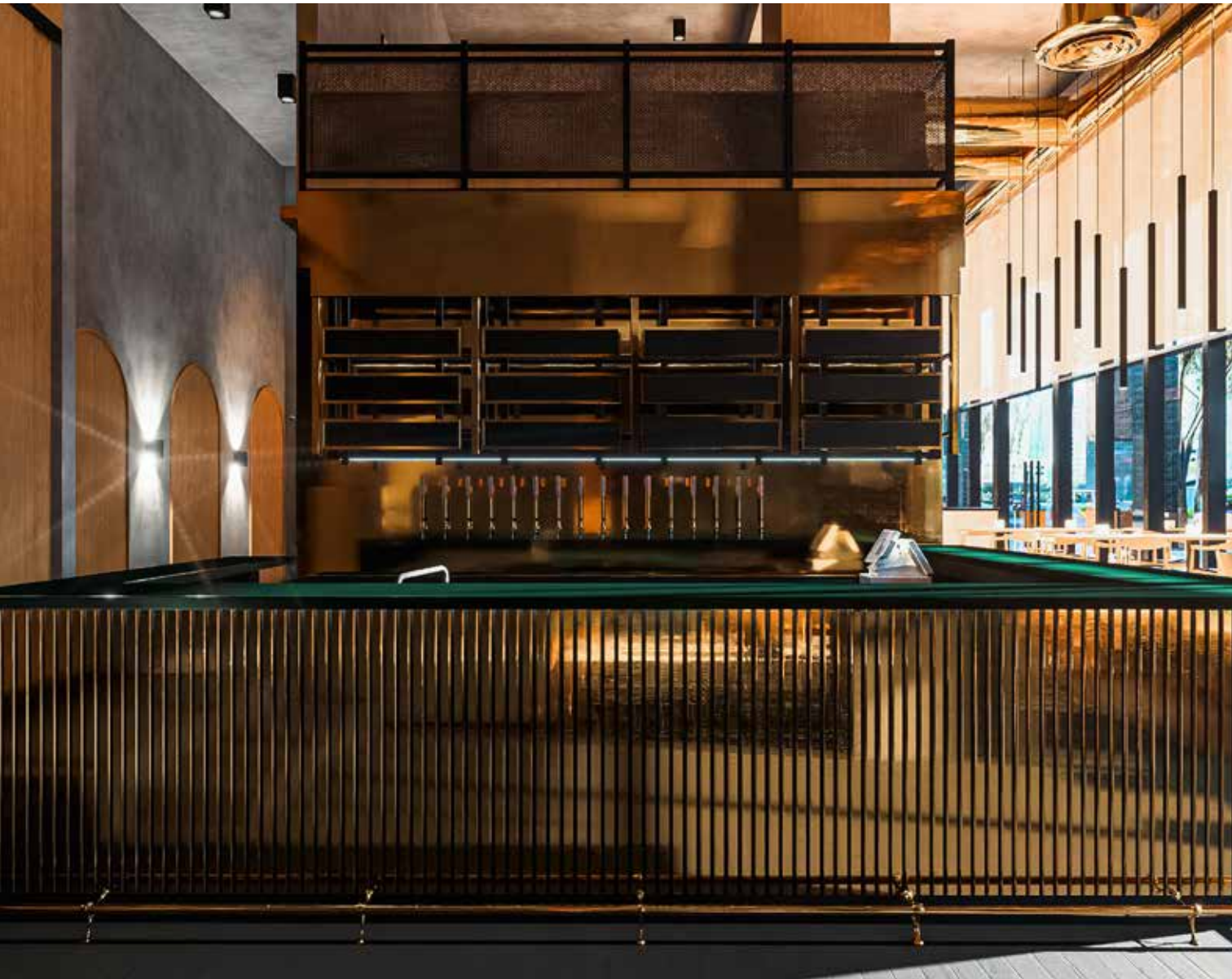
















Retail // 107 sqm // Makati City, Philippines

Interior Design + Arch Visualization + Kitchen Consultancy

TANDEM FINE DINING RESTAURANT

Tandem Fine Dining restaurant is designed with the concept of “Timeless Modernity” which reflects the cuisine of the owner-chefs. The natural tones of the material finishes used give a warm inviting environment. The minimalism heightens the experience of the food served by providing focus and comfortability.

Special Features

- Open Kitchen
- Indoor Planters
- Cocktail Bar







Retail // 48 sqm // Taguig City, Philippines

Interior Design + Arch Visualization + Kitchen Consultancy

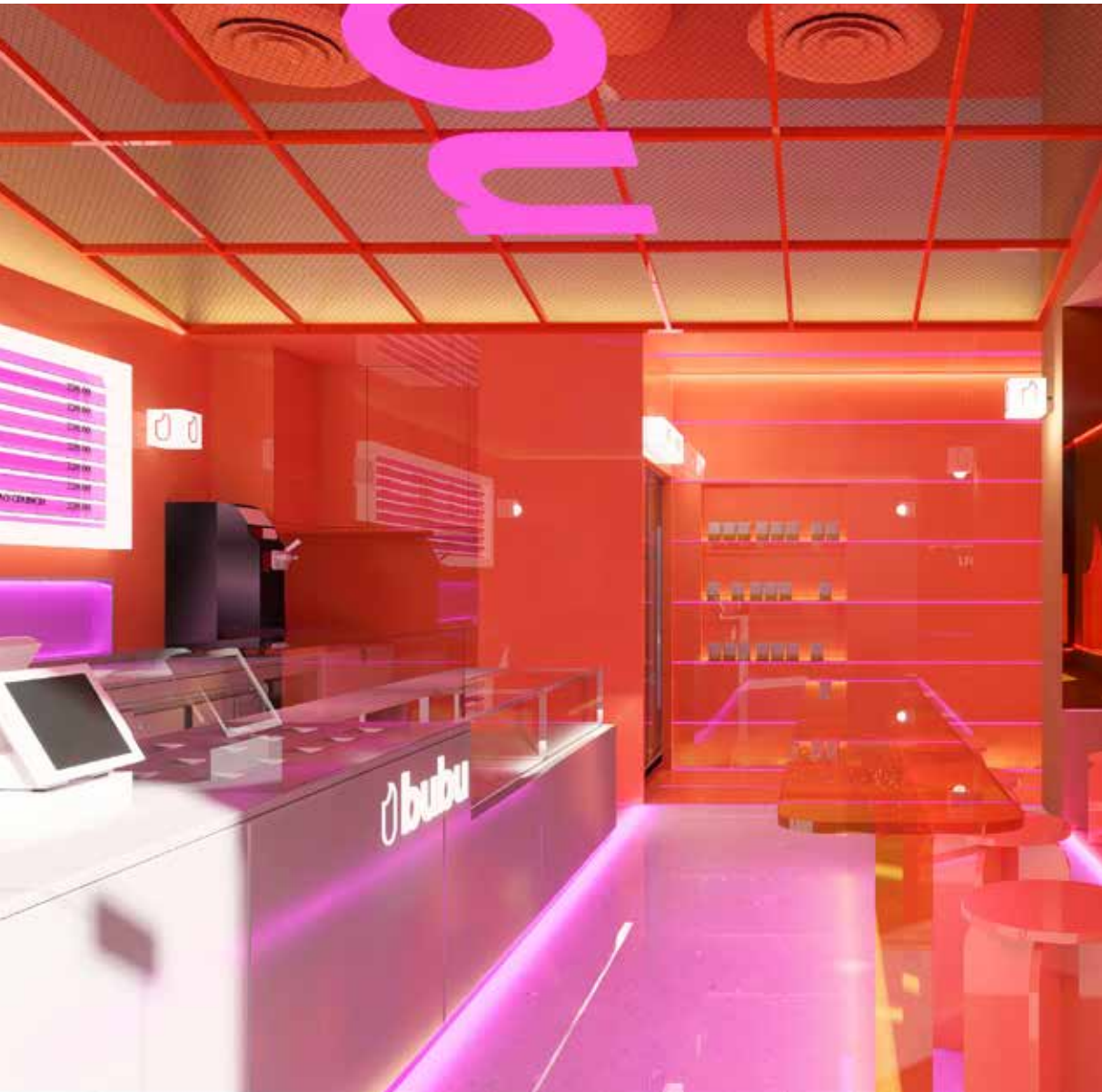
BUBU BARS BGC

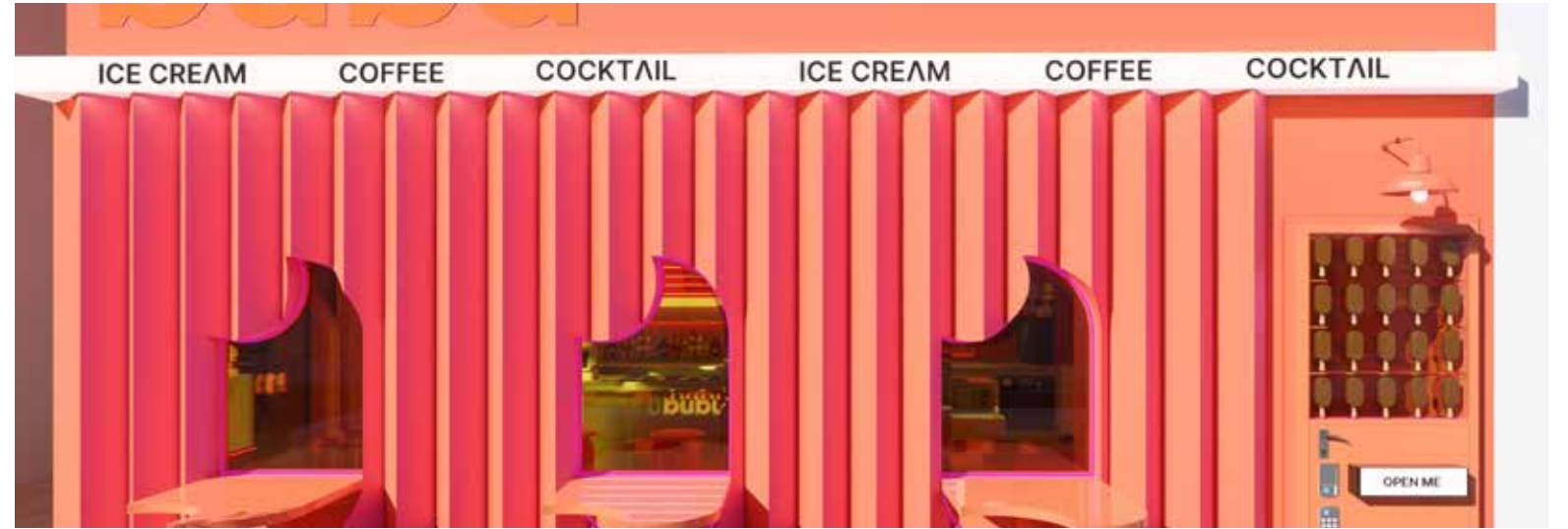
Popularized due to their local vegan ice cream bars, Bubu Bars is opening their signature store in BGC. The store is not only a place where customers can experience their current product line, but is also a laboratory for new products and concepts.

YOU LITTLE MONKEY	220.00	YOU LITTLE MONKEY	220.00	YOU LITTLE MONKEY	220.00
FANCY PANTS	220.00	FANCY PANTS	220.00	FANCY PANTS	220.00
NUTS FOR YOU	220.00	NUTS FOR YOU	220.00	NUTS FOR YOU	220.00
GOLDEN GOODNESS	220.00	GOLDEN GOODNESS	220.00	GOLDEN GOODNESS	220.00
CANDY CANE CRUNCH	220.00	CANDY CANE CRUNCH	220.00	CANDY CANE CRUNCH	220.00
BASIBU	220.00	BASIBU	220.00	BASIBU	220.00
DARK CHOCOLATE CACAO CRUNCH	220.00	DARK CHOCOLATE CACAO CRUNCH	220.00	DARK CHOCOLATE CACAO CRUNCH	220.00



bubu







Retail // 18 sqm // Ortigas City, Philippines

Interior Design + Arch Visualization + Kitchen Consultancy

ALT SCOOPS PODIUM STALL

Alt Scoops is one of the fastest growing ice cream businesses in the Philippines that specializes in vegan ice cream made with oat milk. Starting its business in the middle of the pandemic, alt scoops was primarily an online business. Located in the middle of the Podium Mall, this store will be its first foray into physical stores. Since it is a flagship store, it hopes to attract new clients to the fast growing brand.







Retail // 150 sqm // Manila, Philippines

Interior Design + Arch Visualization + Kitchen Consultancy

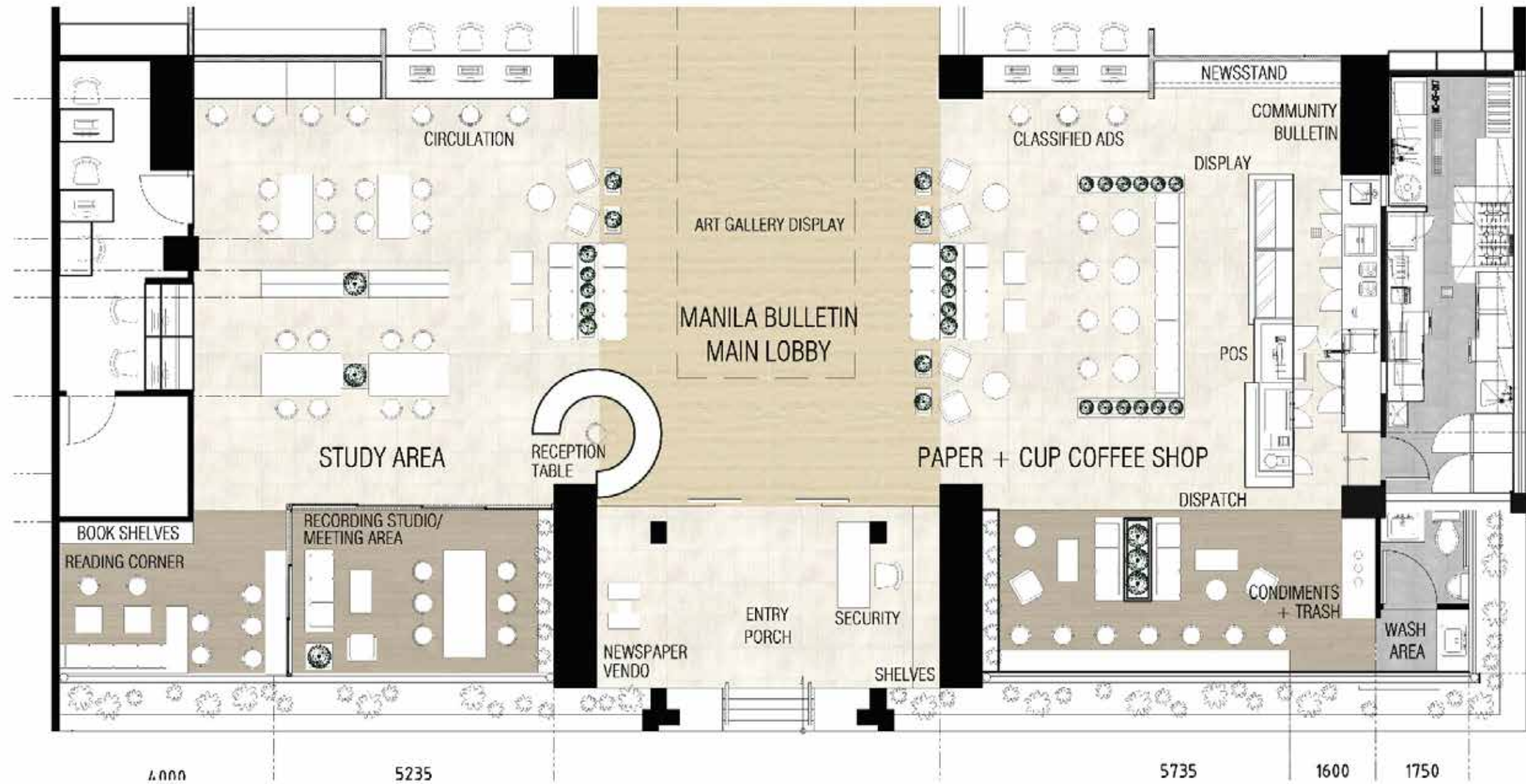
PAPER + CUP CAFE

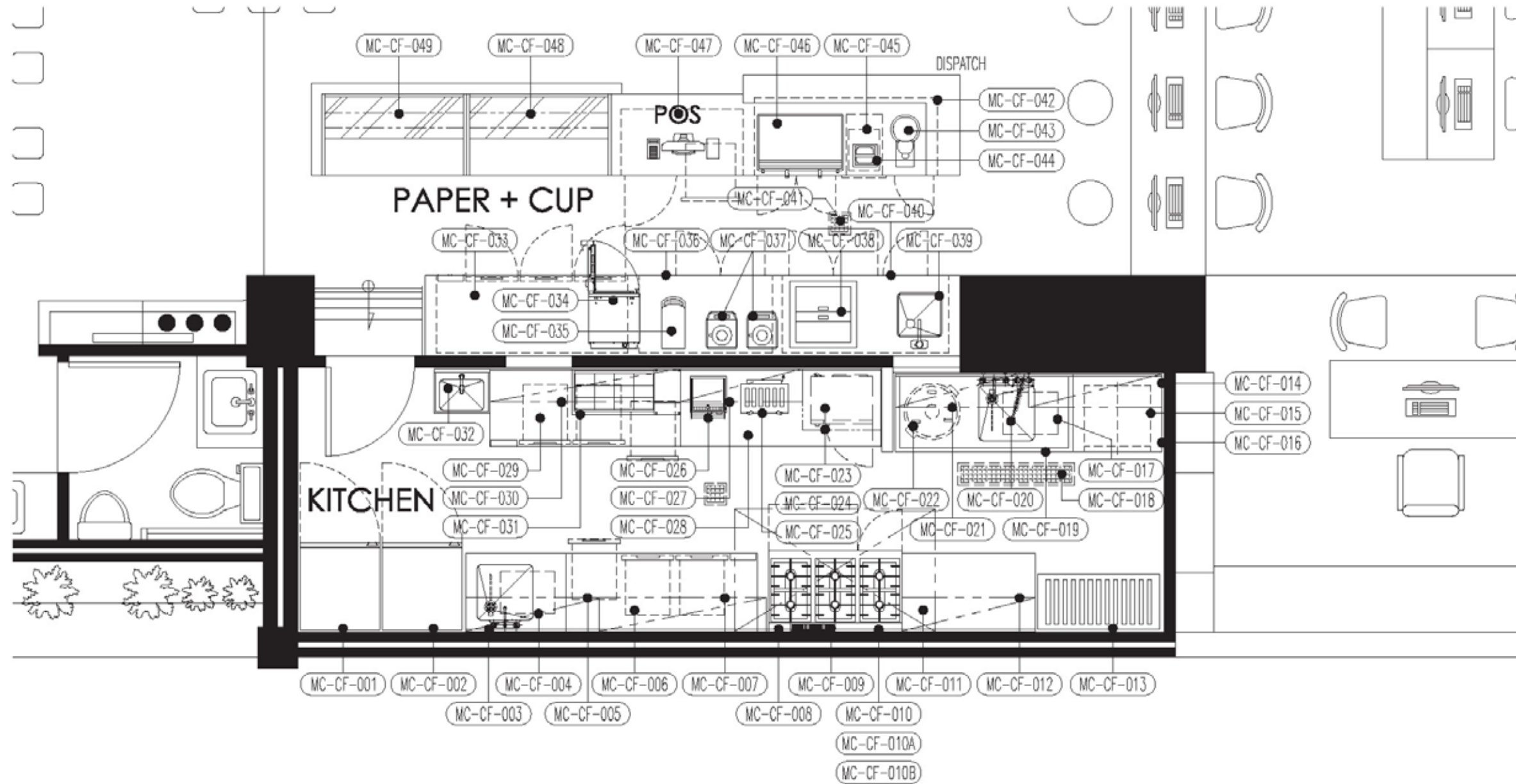
Manila Bulletin is one of the oldest broadsheet media companies in the Philippines with a 120 year legacy of excellent journalism. We transformed their lobby into a multipurpose space mostly acting as a cafe with the brand "Paper + Cup". Paper + Cup was designed to not only act as an independent cafe but also as a brand extension of Manila Bulletin as a whole. It embraces the industrial nature of the printing press while bringing it to the modern sustainable era. The design also highlights the freshness of the food it serves.

Our philosophy when designing spaces is maximizing space by stacking different programs together making it very flexible. By creating different distinct spaces and allowing each to fluidly interact with one another, you can create endless configurations that allow the users to be more creative.

Special Features

- Indoor Plant Walls and Hanging Plants
- Recording Studio and Meeting Area
- Merchandize Newsstand
- Study Area and Digital Archive
- Art Gallery











WE DESIGN PLACES WELL.

PINO
PLACES





CONTACT US.

nicholai@pino.ph

PINO
PLACES