



**JACKIE SY GO
& ASSOCIATES**
CONSULTANCY

COMPANY PROFILE



**Food forms function,
function forms food.**



MISSION

To best equip food service facilities that uplift the Filipino standard of food & beverage.

VISION

To be an internationally recognized consultancy firm that seamlessly merges engineering with passion for food.

KITCHEN AND LAUNDRY ENGINEERING

goes beyond traditional kitchen and laundry consultancy. It is a truly unique service that JSG Consultancy offers, which is only made possible due to our...



Seasoned Multidiplinarity Team of
**PROFESSIONAL ARCHITECTS,
ENGINEERS, AND CHEFS**



Ability to Professionally Design
KITCHEN AND MEPF



International Accreditation by
**MARRIOTT GROUP AND
HYATT GROUP**



3D Design using both
REVIT CAD and COSTOS



30+ Years of
**KITCHEN AND LAUNDRY
ENGINEERING EXPERIENCE**



Strong Belief and Practice of
**TRANSPARENCY AND
INTEGRITY**

INTERNATIONALLY ACCREDITED

JSG Consultancy is the only Filipino kitchen and laundry consultancy company that is internationally accredited by both Marriot Group and Hyatt Group.



GRAND | HYATT®

OUR CORE TEAM OF EXPERTS

JACQUELINE SY GO

- PRESIDENT
- PROFESSIONAL CHEF
- ENGINEER

APOL VALIAO

- ASSOCIATE
- ENGINEER

NICHOLAI DAVID SY GO

- CHIEF OPERATING OFFICER
- ARCHITECT
- PROGRAMMER

DINDO TORRES

- PARTNER
- SPACE PLANNER



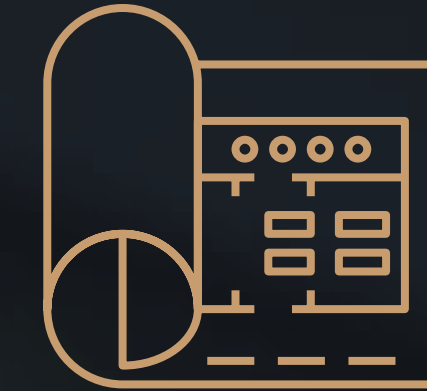
OUR SERVICES



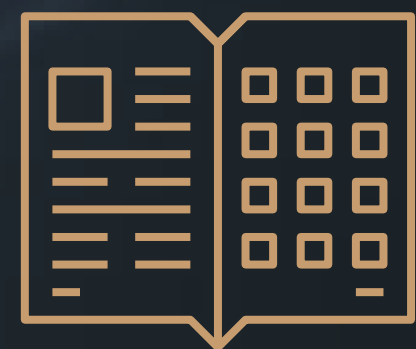
01 Preliminary Designing
& Planning



02 Design Development
& Engineering



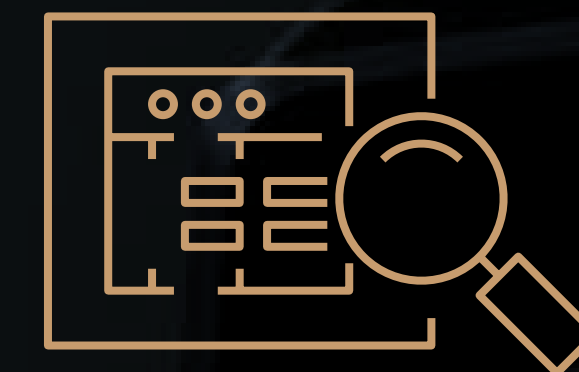
03 Construction
& Documentation



04 Tendering Phase



05 Tender Evaluation



06 Construction Observation
& Coordination

OUR SERVICES

**Preliminary Designing
& Planning**

1



**Design Development
& Engineering**

2



**Construction
& Documentation**

3



OUR SERVICES

Tendering Phase

4



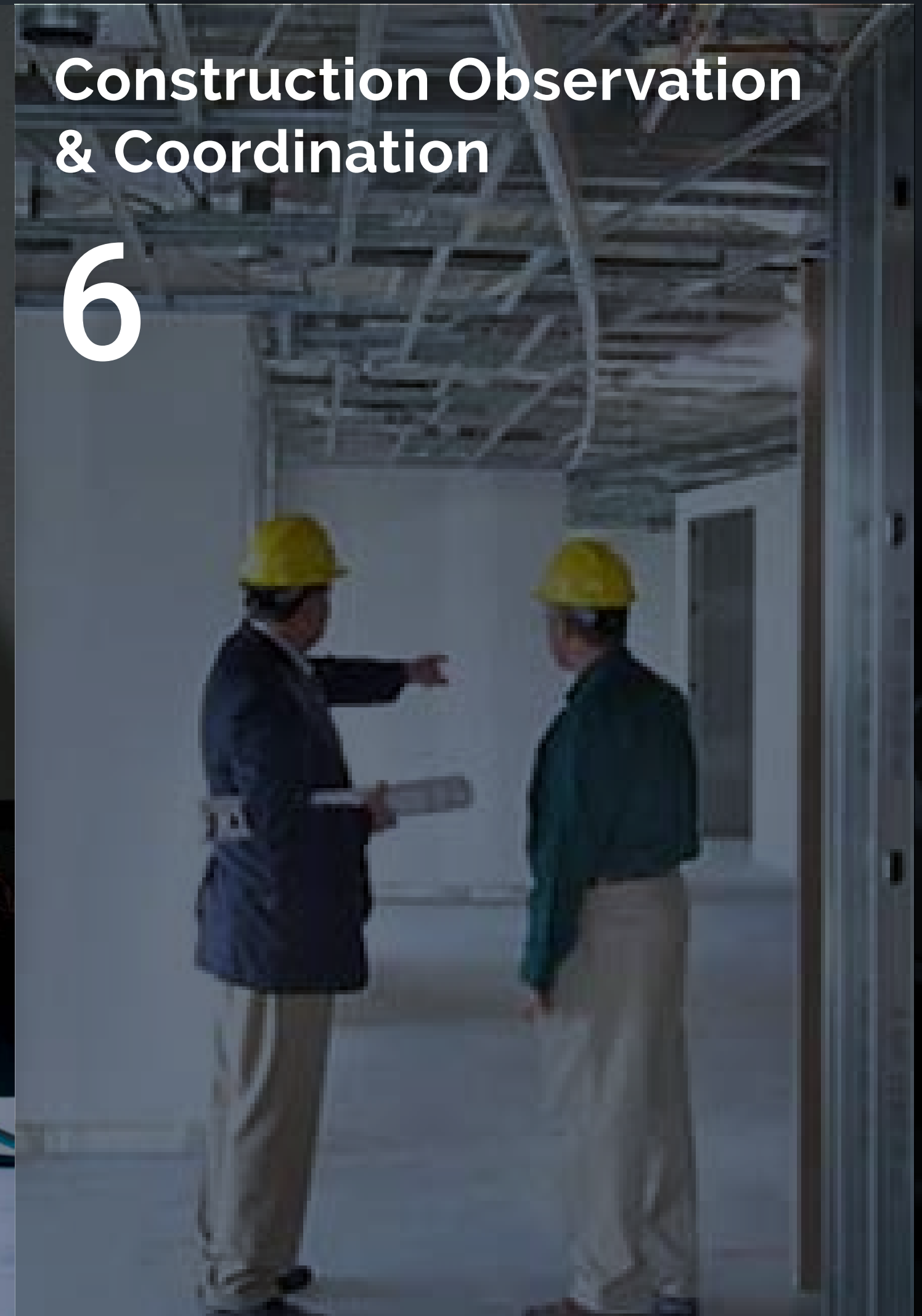
Tender Evaluation

5



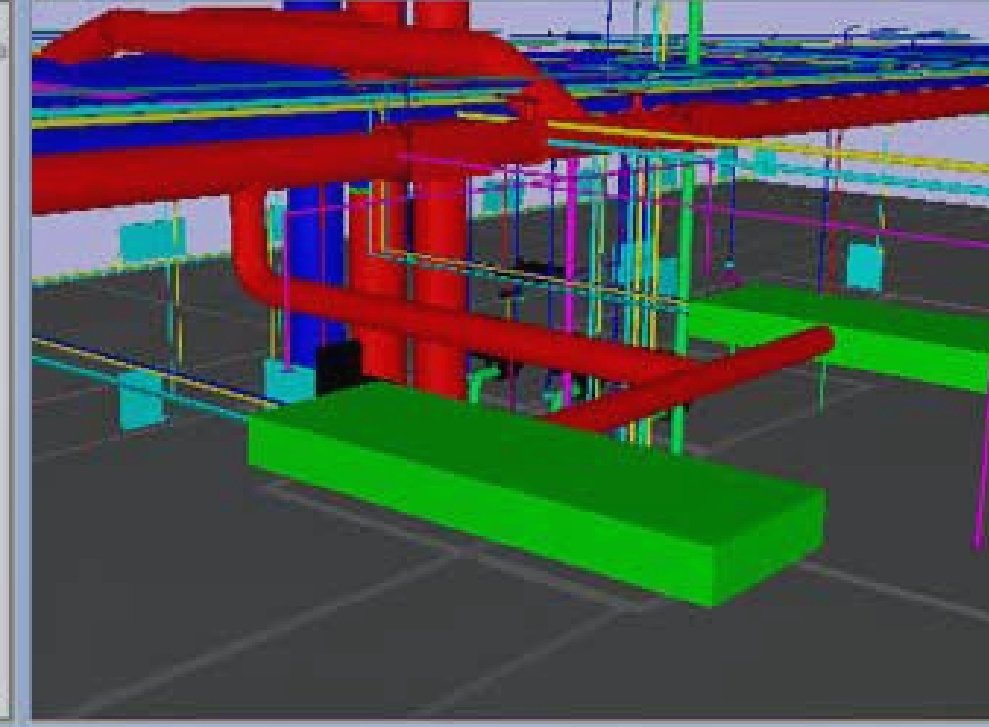
**Construction Observation
& Coordination**

6





| | Material/Type | Qty1 | UoM1 | Qty2 | UoM2 | Qty3 | UoM3 |
|----------------------|---------------|------|----------|--------|--------|------|------|
| BardNa.Ifz | | | | | | | |
| Air Terminals | | | | | | | |
| | | 9.33 | M3 [...] | 163.00 | EAC... | 0.00 | |
| 1.10.4 | GV2007 | 0.10 | M3 [...] | 1.00 | EAC... | 0.00 | |
| 1.12.4 | GV2007 | 0.10 | M3 [...] | 1.00 | EAC... | 0.00 | |
| 1.13.4 | GV2007 | 0.10 | M3 [...] | 1.00 | EAC... | 0.00 | |
| 1.14.4 | GV2007 | 0.10 | M3 [...] | 1.00 | EAC... | 0.00 | |
| 1.15.4 | GV2007 | 0.10 | M3 [...] | 1.00 | EAC... | 0.00 | |
| 1.16.4 | GV2007 | 0.10 | M3 [...] | 1.00 | EAC... | 0.00 | |
| 1.17.4 | GV2007 | 0.10 | M3 [...] | 1.00 | EAC... | 0.00 | |
| 1.18.4 | GV2007 | 0.10 | M3 [...] | 1.00 | EAC... | 0.00 | |
| 1.19.4 | GV2007 | 0.10 | M3 [...] | 1.00 | EAC... | 0.00 | |
| 1.22.4 | GV2007 | 0.10 | M3 [...] | 1.00 | EAC... | 0.00 | |



Autodesk Revit

OUR TOOLS

- KITCHEN AND MEPF 3D DESIGN USING REVIT.
- EQUIPPED WITH REVIT TRAINED ENGINEERS.
- CLASH DETECTION OF MEPF.

CostOS

- TRANSPARENT COSTING USING COSTOS.
- MATERIALS ARE COSTED BY BILL OF QUANTITY NOT PER SQM.



Virtual Reality

- VIRTUAL REALITY USING HTC VIVE.
- EXPERIENCE YOUR SPACE BEFORE ITS EVEN BUILT.

OUR KEY PROJECTS

Marriot Hotels

**PASAY CITY
COMPLETED 2009
1,372.39 SQM.**



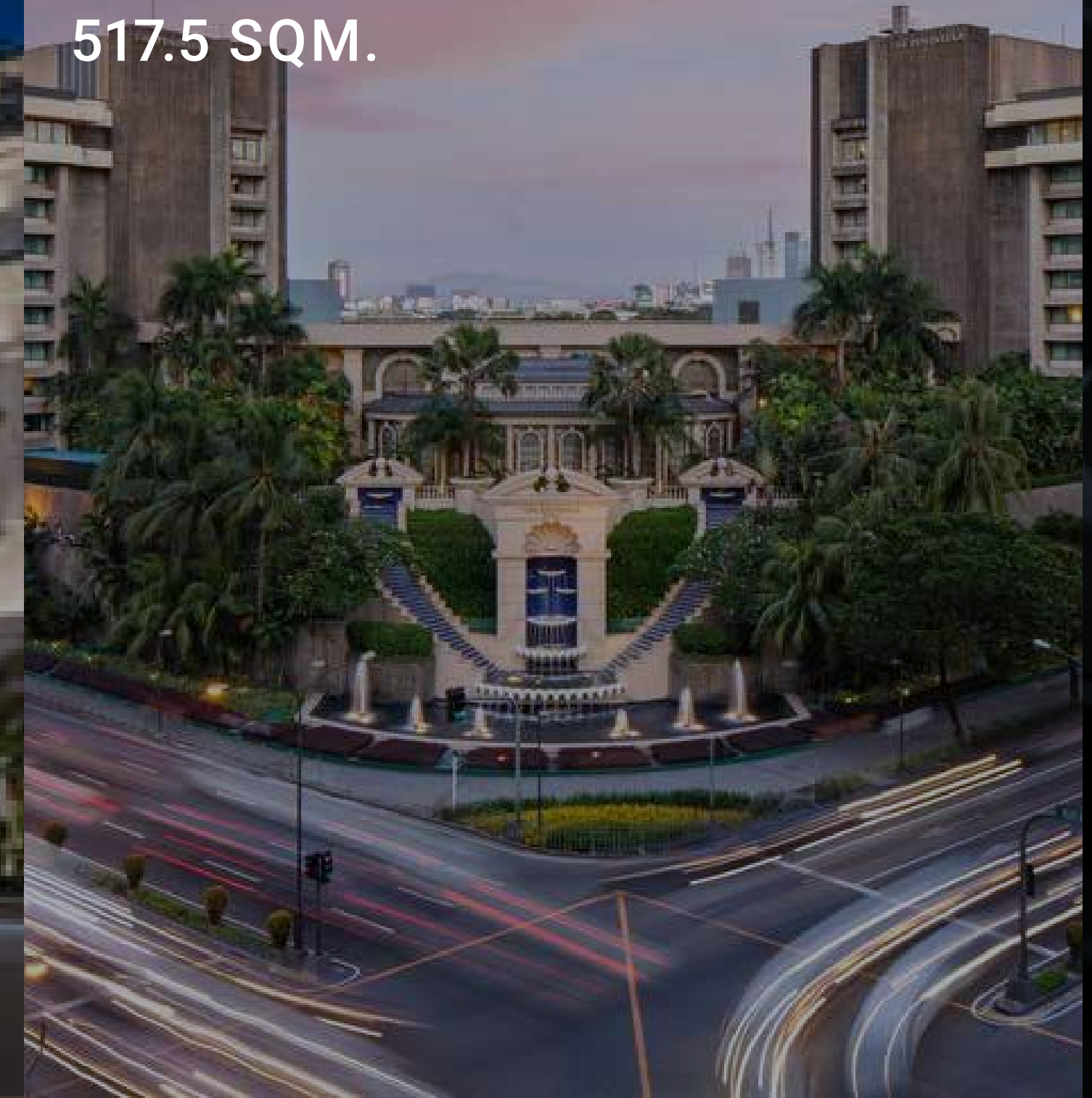
Manila Hotel

**MANILA
COMPLETED 2011
1,924.12 SQM.**



Peninsula

**MAKATI
COMPLETED 2011
517.5 SQM.**



OUR KEY PROJECTS

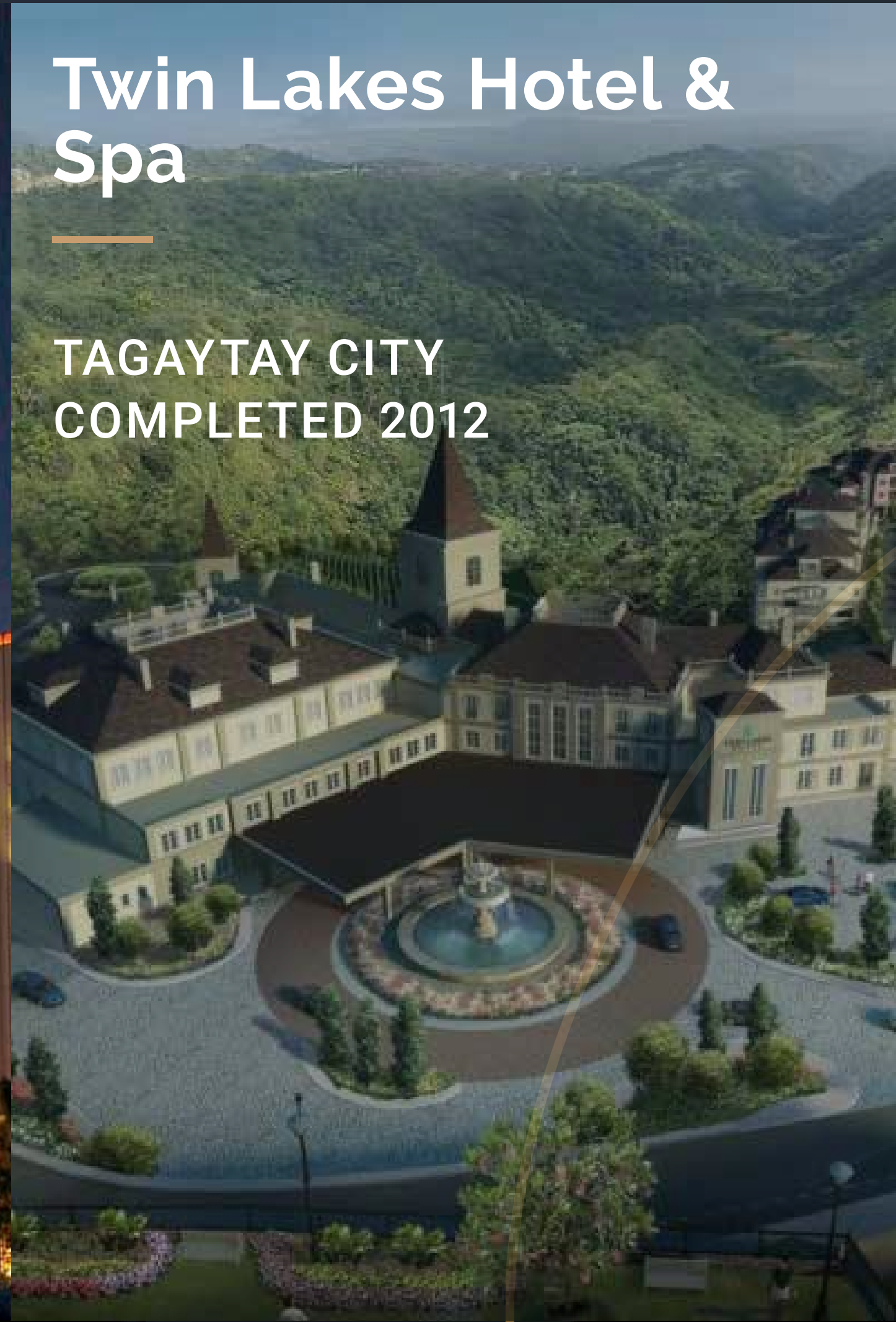
**Resorts World
Manila**

PASAY CITY
COMPLETED 2011
2,967.69 SQM.



**Twin Lakes Hotel &
Spa**

TAGAYTAY CITY
COMPLETED 2012



Savoy Hotel

CEBU MACTAN
COMPLETED 2014
254 SQM.



OUR KEY PROJECTS

Grand Hyatt

FORT BONIFACIO
COMPLETED 2018
2,014 SQM.



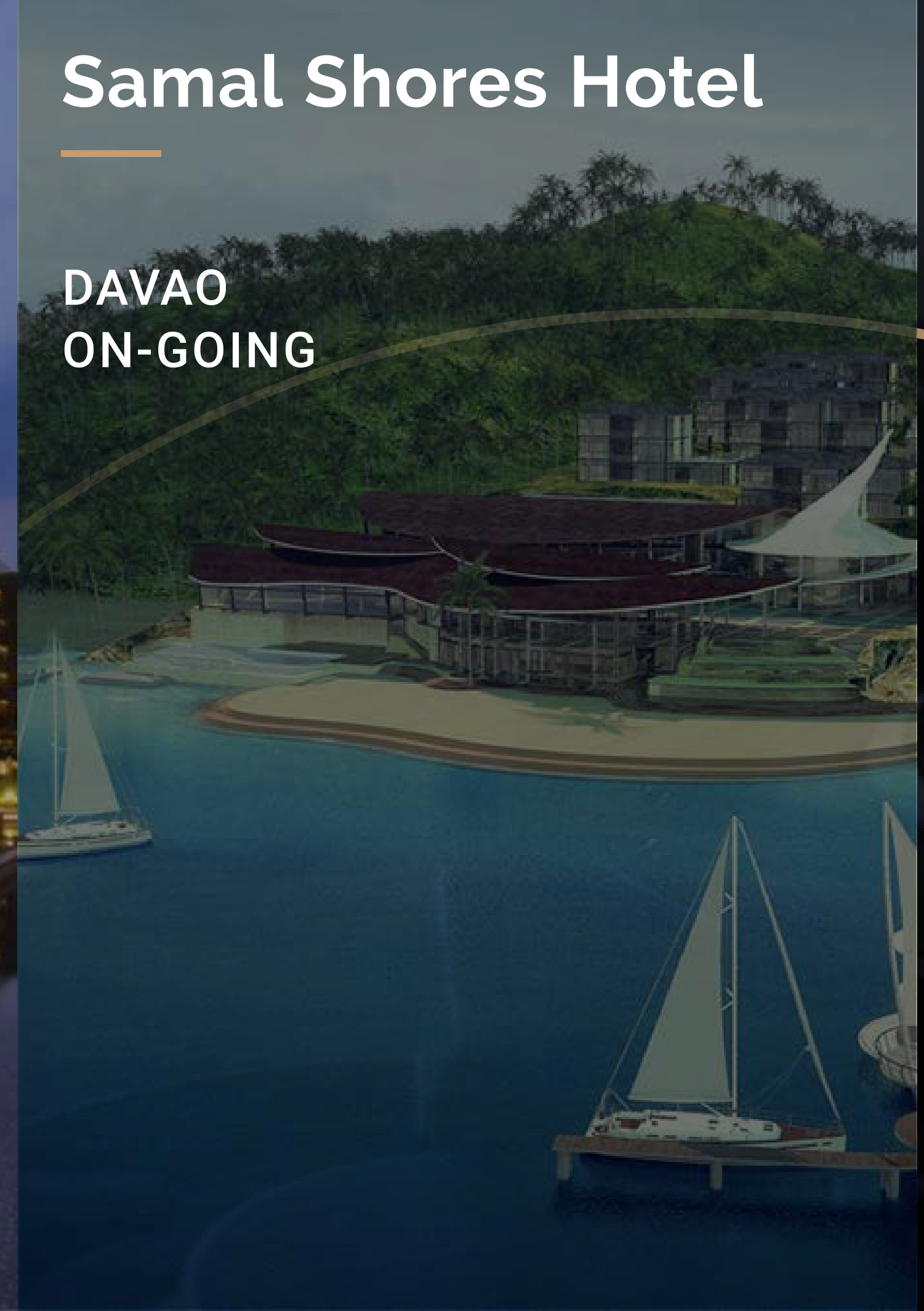
City of Dreams

PASAY CITY
COMPLETED 2019



Samal Shores Hotel

DAVAO
ON-GOING



ON-GOING KEY PROJECTS

Sheraton Malate

MANILA
ON-GOING

**Four Points by
Sheraton Mactan**

CEBU
ON-GOING

**Four Points by
Sheraton Aseana**

DAVAO
ON-GOING

**Nan Foods
Commissary**

PAMPANGA
ON-GOING

**Four Points by
Sheraton Palawan**

PUERTO PRINCESA
ON-GOING

**Four Points by
Sheraton Davao**

DAVAO
ON-GOING

**Hyatt Regency
Clark**

CLARK
ON-GOING

Element Hotel

PUERTO PRINCESA
ON-GOING

CONTACT US

- W** www.jsgconsultancy.com
- E** jackie.go@jsgconsultancy.com
wilson.go@jsgconsultancy.com
dindo.torres@jsgconsultancy.com
- T** (+632) 851 5874
(+632) 853 1418
(+632) 854 7734

