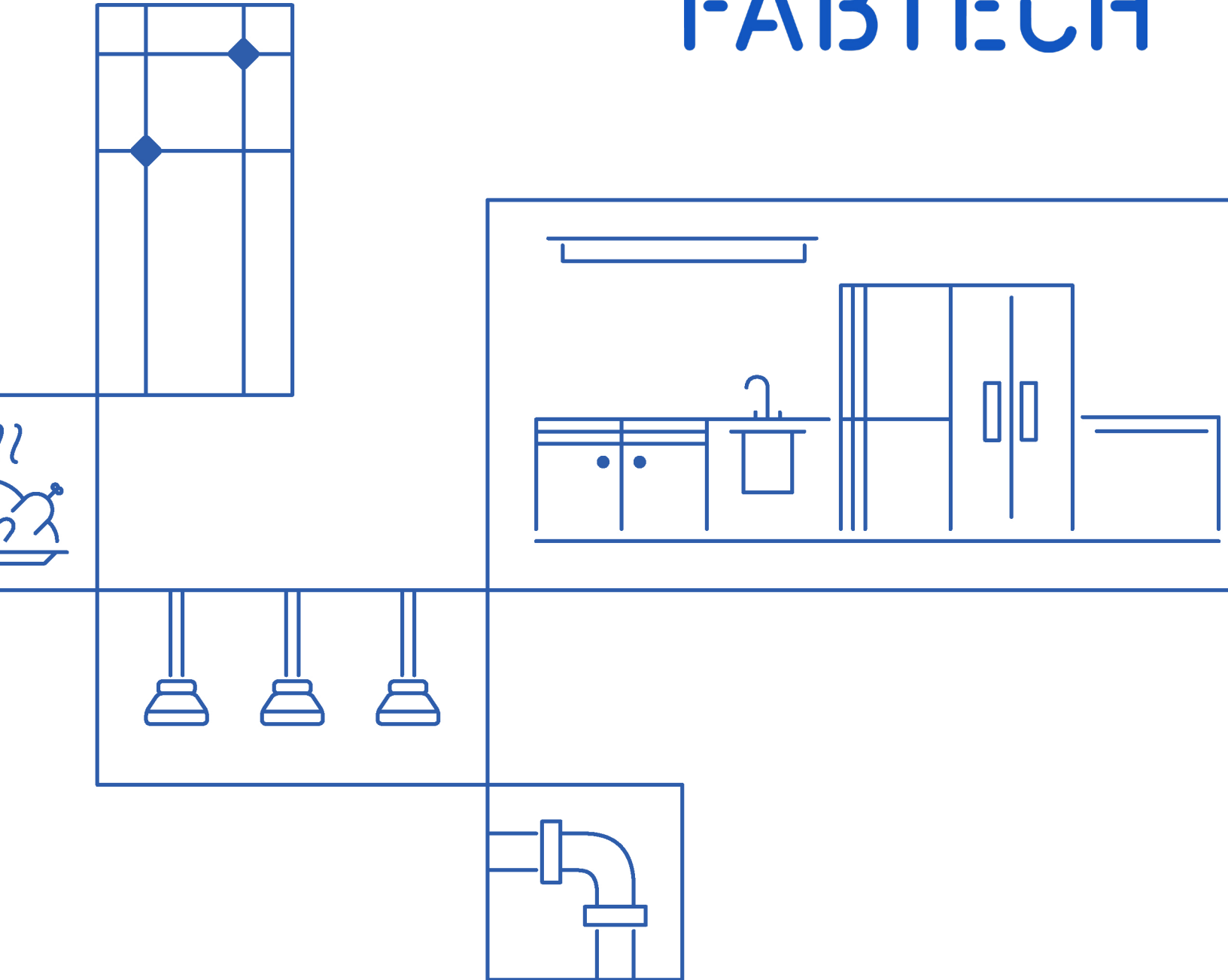


# FABTECH



**THE NEW STANDARD**  
STANDARD FABRICATION CATALOG

# Group of Companies

## 01 PINO Studio

PINO Studio is a Manila-based design and branding firm dedicated to the reimagination of the Filipino visual landscape.

## 03 Fabtech Masterbuilders

A contracting company engaged in general construction and project management. It specializes in special trades such as mechanical, electrical, plumbing, and fire safety systems.

## 05 Fabtech Export

A PEZA-registered manufacturing company engaged in fabricating high-quality foodservice equipment using the most advanced technology.

## 07 Gruppo Dolci

A local food company that produces and distributes premium ingredients and finished products such as gelato, pastries, and pasta.

## 02 JSG Consultancy

A design and management consultancy firm that specializes in commercial kitchen and laundry design. It is the only Filipino consultancy company accredited by both Hyatt and Marriott.

## 04 Fabtech International

A leading distributor of commercial kitchen and laundry equipment of globally recognized brands. It is able to provide complete kitchen and laundry solutions.

## 06 Auro Chocolate

A PEZA-certified cocoa and chocolate manufacturing company that specializes in producing premium single-origin products.

## 08 Green Point

The only official service station for Bitzer compressors in the Philippines. Provider of genuine Bitzer spare parts and services.



**PINO**

01

**JSQ**

02

**FABTECH**

MASTERBUILDERS

03

**Green Point**<sup>®</sup>  
A SERVICE BY BITZER GROUP

08

**FABTECH**

INTERNATIONAL

04

  
**AURO**  
CHOCOLATE

07

  
**GRUPPO  
DOLCI**  
*Creating the first industry. Together.*

06

**FABTECH**

EXPORT

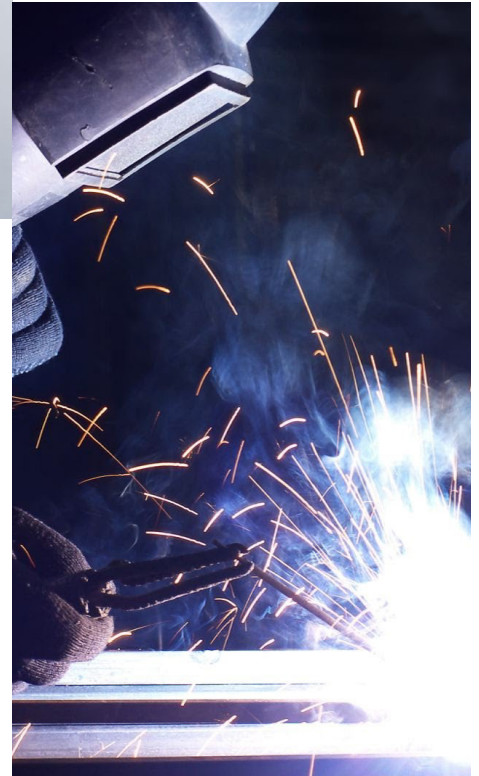
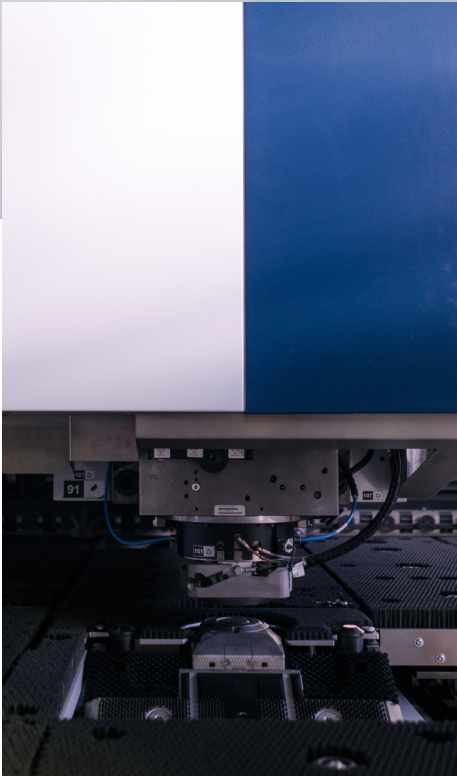
05



# TRADITION MEETS INNOVATION



**STAINLESS STEEL FABRICATION PLANT**  
FILINVEST TECHNOPARK, LAGUNA, CALAMBA



## TRUMATIC 6000

The first Trumpf laser and punch combination machine in the Philippines for the HORECA industry. The Trumatic 6000's laser precision guarantees unrivaled quality. Furthermore, combination of cut and forming which increases the quality and decreases amount of finishing.

## TRUBEND 5000

To match the quality and precision of the Trumatic 6000, we also invested in the Trumpf Trubend 5000. This bending machine is fully programmable and is complete with robotic 6-axis backgauge and arm assist.

## HIGHLY TRAINED CRAFTSMEN

Our design and production team consists of highly trained craftsmen. With more than 30 years in the industry, we have maintained traditional methods of fabrication whilst introducing the most advanced technology available.



# OUR STANDARD

---



## 304 STAINLESS STEEL

To comply with international food safety and hygiene standards, we fabricate all of our products using 304 stainless steel. It also avoids rust which makes it the perfect material for professional use.



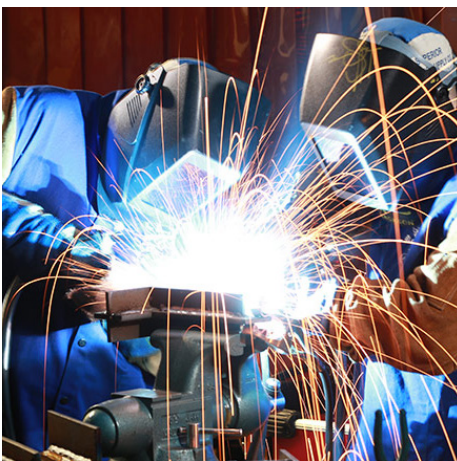
## HACCP COMPLIANT

HACCP or Hazard Analysis and Critical Control Point system is the international food safety standard. Alongside using 304 stainless steel, our design also achieves HACCP compliance. There are no exposed corners and edges for rodents and all parts are accessible to clean.



## PROFESSIONAL GRADE

Our equipment are all designed for professional use. Hotels, restaurants, and catering services require heavy duty equipment. The cost of downtime is expensive.



## BUILT TO LAST

Since we started 30 years ago, we have clients that still use the same stainless equipment we have supplied them. They are really built to last and is a great long term investment.



## SQUARE TUBES FOR STABILITY

We only use square tubes for the frame and legs of our equipment. It is much more stable than round tube.



## DIE CAST STAMPED SINKS

Sinks fall into 2 categories: stamped or fully welded. Welding introduces weakness in the composition of the stainless steel and is prone to rust. Stamping ensures homogeneous quality.

# OUR RANGE

SERIES	HORECA STANDARD	RESIDENTIAL STANDARD	MEDICAL STANDARD	MODULA	CUSTOMIZED
FULLY WELDED	YES	YES	YES	FLATPACK ASSEMBLY	YES
QUALITY GRADE	PROFESSIONAL	SEMI-PROFESSIONAL	PROFESSIONAL	SEMI-PROFESSIONAL	PROFESSIONAL
FIT TO SITE	NO	NO	NO	NO	YES
LEAD TIME	1 - 7 DAYS	1 - 7 DAYS	1 - 7 DAYS	1 - 3 DAYS	UP TO 30 DAYS
VALUE	++	++	++	+	+++



**010  
WORK TABLE**

**16  
WORK TABLE  
WITH DOOR**



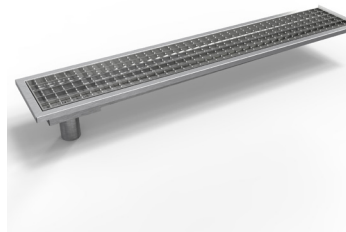
**024  
PREPARATION  
SINK TABLE**



**048  
TROLLEY**



**052  
BIN**



**053  
DRAINAGE**



# TABLE OF CONTENTS

## 010 WORK TABLE

Work Table  
 Work Table with Backsplash  
 Corner Work Table  
 Corner Work Table with Backsplash

## 016 WORK TABLE WITH DOOR

Work Table with Door  
 Wall Mounted Cabinet  
 Floor Mounted Cabinet

## 024 PREPARATION SINK TABLE

Sink Table with Backsplash and Square Edge  
 Sink Table with Backsplash and Inverted Edge  
 Sink Table Island Type with Inverted Edge

## 032 DISHWASHING TABLE

## 038 SINK

Drop-in Sink  
 Wall Mounted Handwash Sink  
 Floor Mounted Handwash Sink  
 Mop Sink

## 042 UPRIGHT CABINET

Swing Door Upright Cabinet  
 Sliding Door Upright Cabinet

## 044 SHELVING

Floor Mounted Shelf  
 Wall Mounted Shelf  
 Ceiling Mounted Shelf  
 Work Table Overshelf  
 Salamander Overshelf

## 048 TROLLEY

Bakery Tray Trolley  
 Gastronomy Tray Trolley  
 Combi Oven Tray Trolley

## 052 GARBAGE BIN

## 053 DRAINAGE

Floor Grate with Sump Pan  
 Grease Trap



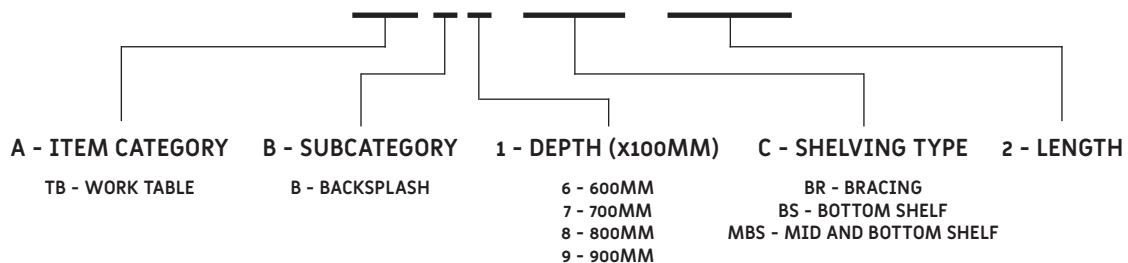
# WORK TABLE <sub>010</sub>



- Fully welded.
- 304 stainless steel.
- Rugged heavy duty design.
- 1.5 mm thick stainless steel top with hairline finish.
- Flat top work bench available in 700, 800, and 900 mm depth.
- Flat top assembled with stiffener.
- Adjustable stainless steel footing.

## MODEL NUMBER CODE

**AAB1-CCC-2222**





## WORK TABLE WITH BRACING

### 600MM DEPTH

CODE	L	D	H	BS
TB6-BR-400	400	600	850	-
TB6-BR-500	500	600	850	-
TB6-BR-600	600	600	850	-
TB6-BR-700	700	600	850	-
TB6-BR-800	800	600	850	-
TB6-BR-900	900	600	850	-
TB6-BR-1000	1000	600	850	-
TB6-BR-1100	1100	600	850	-
TB6-BR-1200	1200	600	850	-
TB6-BR-1300	1300	600	850	-
TB6-BR-1400	1400	600	850	-
TB6-BR-1500	1500	600	850	-
TB6-BR-1600*	1600	600	850	-
TB6-BR-1700*	1700	600	850	-
TB6-BR-1800*	1800	600	850	-
TB6-BR-1900*	1900	600	850	-
TB6-BR-2000*	2000	600	850	-
TB6-BR-2100*	2100	600	850	-

### 700MM DEPTH

CODE	L	D	H	BS
TB7-BR-400	400	700	850	-
TB7-BR-500	500	700	850	-
TB7-BR-600	600	700	850	-
TB7-BR-700	700	700	850	-
TB7-BR-800	800	700	850	-
TB7-BR-900	900	700	850	-
TB7-BR-1000	1000	700	850	-
TB7-BR-1100	1100	700	850	-
TB7-BR-1200	1200	700	850	-
TB7-BR-1300	1300	700	850	-
TB7-BR-1400	1400	700	850	-
TB7-BR-1500	1500	700	850	-
TB7-BR-1600*	1600	700	850	-
TB7-BR-1700*	1700	700	850	-
TB7-BR-1800*	1800	700	850	-
TB7-BR-1900*	1900	700	850	-
TB7-BR-2000*	2000	700	850	-
TB7-BR-2100*	2100	700	850	-

### 800MM DEPTH

CODE	L	D	H	BS
TB8-BR-400	400	800	850	-
TB8-BR-500	500	800	850	-
TB8-BR-600	600	800	850	-
TB8-BR-700	700	800	850	-
TB8-BR-800	800	800	850	-
TB8-BR-900	900	800	850	-
TB8-BR-1000	1000	800	850	-
TB8-BR-1100	1100	800	850	-
TB8-BR-1200	1200	800	850	-
TB8-BR-1300	1300	800	850	-
TB8-BR-1400	1400	800	850	-
TB8-BR-1500	1500	800	850	-
TB8-BR-1600*	1600	800	850	-
TB8-BR-1700*	1700	800	850	-
TB8-BR-1800*	1800	800	850	-
TB8-BR-1900*	1900	800	850	-
TB8-BR-2000*	2000	800	850	-
TB8-BR-2100*	2100	800	850	-

### 900MM DEPTH

CODE	L	D	H	BS
TB9-BR-400	400	900	850	-
TB9-BR-500	500	900	850	-
TB9-BR-600	600	900	850	-
TB9-BR-700	700	900	850	-
TB9-BR-800	800	900	850	-
TB9-BR-900	900	900	850	-
TB9-BR-1000	1000	900	850	-
TB9-BR-1100	1100	900	850	-
TB9-BR-1200	1200	900	850	-
TB9-BR-1300	1300	900	850	-
TB9-BR-1400	1400	900	850	-
TB9-BR-1500	1500	900	850	-
TB9-BR-1600*	1600	900	850	-
TB9-BR-1700*	1700	900	850	-
TB9-BR-1800*	1800	900	850	-
TB9-BR-1900*	1900	900	850	-
TB9-BR-2000*	2000	900	850	-
TB9-BR-2100*	2100	900	850	-

\*ON 6 LEGS



## WORK TABLE WITH BOTTOM SHELF

### 600MM DEPTH

CODE	L	D	H	BS
TB6-BS-400	400	600	850	-
TB6-BS-500	500	600	850	-
TB6-BS-600	600	600	850	-
TB6-BS-700	700	600	850	-
TB6-BS-800	800	600	850	-
TB6-BS-900	900	600	850	-
TB6-BS-1000	1000	600	850	-
TB6-BS-1100	1100	600	850	-
TB6-BS-1200	1200	600	850	-
TB6-BS-1300	1300	600	850	-
TB6-BS-1400	1400	600	850	-
TB6-BS-1500	1500	600	850	-
TB6-BS-1600*	1600	600	850	-
TB6-BS-1700*	1700	600	850	-
TB6-BS-1800*	1800	600	850	-
TB6-BS-1900*	1900	600	850	-
TB6-BS-2000*	2000	600	850	-
TB6-BS-2100*	2100	600	850	-

### 700MM DEPTH

CODE	L	D	H	BS
TB7-BS-400	400	700	850	-
TB7-BS-500	500	700	850	-
TB7-BS-600	600	700	850	-
TB7-BS-700	700	700	850	-
TB7-BS-800	800	700	850	-
TB7-BS-900	900	700	850	-
TB7-BS-1000	1000	700	850	-
TB7-BS-1100	1100	700	850	-
TB7-BS-1200	1200	700	850	-
TB7-BS-1300	1300	700	850	-
TB7-BS-1400	1400	700	850	-
TB7-BS-1500	1500	700	850	-
TB7-BS-1600*	1600	700	850	-
TB7-BS-1700*	1700	700	850	-
TB7-BS-1800*	1800	700	850	-
TB7-BS-1900*	1900	700	850	-
TB7-BS-2000*	2000	700	850	-
TB7-BS-2100*	2100	700	850	-

### 800MM DEPTH

CODE	L	D	H	BS
TB8-BS-400	400	800	850	-
TB8-BS-500	500	800	850	-
TB8-BS-600	600	800	850	-
TB8-BS-700	700	800	850	-
TB8-BS-800	800	800	850	-
TB8-BS-900	900	800	850	-
TB8-BS-1000	1000	800	850	-
TB8-BS-1100	1100	800	850	-
TB8-BS-1200	1200	800	850	-
TB8-BS-1300	1300	800	850	-
TB8-BS-1400	1400	800	850	-
TB8-BS-1500	1500	800	850	-
TB8-BS-1600*	1600	800	850	-
TB8-BS-1700*	1700	800	850	-
TB8-BS-1800*	1800	800	850	-
TB8-BS-1900*	1900	800	850	-
TB8-BS-2000*	2000	800	850	-
TB8-BS-2100*	2100	800	850	-

### 900MM DEPTH

CODE	L	D	H	BS
TB9-BS-400	400	900	850	-
TB9-BS-500	500	900	850	-
TB9-BS-600	600	900	850	-
TB9-BS-700	700	900	850	-
TB9-BS-800	800	900	850	-
TB9-BS-900	900	900	850	-
TB9-BS-1000	1000	900	850	-
TB9-BS-1100	1100	900	850	-
TB9-BS-1200	1200	900	850	-
TB9-BS-1300	1300	900	850	-
TB9-BS-1400	1400	900	850	-
TB9-BS-1500	1500	900	850	-
TB9-BS-1600*	1600	900	850	-
TB9-BS-1700*	1700	900	850	-
TB9-BS-1800*	1800	900	850	-
TB9-BS-1900*	1900	900	850	-
TB9-BS-2000*	2000	900	850	-
TB9-BS-2100*	2100	900	850	-

\*ON 6 LEGS



## WORK TABLE WITH MID AND BOTTOM SHELF

### 600MM DEPTH

CODE	L	D	H	BS
TB6-MBS-400	400	600	850	-
TB6-MBS-500	500	600	850	-
TB6-MBS-600	600	600	850	-
TB6-MBS-700	700	600	850	-
TB6-MBS-800	800	600	850	-
TB6-MBS-900	900	600	850	-
TB6-MBS-1000	1000	600	850	-
TB6-MBS-1100	1100	600	850	-
TB6-MBS-1200	1200	600	850	-
TB6-MBS-1300	1300	600	850	-
TB6-MBS-1400	1400	600	850	-
TB6-MBS-1500	1500	600	850	-
TB6-MBS-1600*	1600	600	850	-
TB6-MBS-1700*	1700	600	850	-
TB6-MBS-1800*	1800	600	850	-
TB6-MBS-1900*	1900	600	850	-
TB6-MBS-2000*	2000	600	850	-
TB6-MBS-2100*	2100	600	850	-

### 700MM DEPTH

CODE	L	D	H	BS
TB7-MBS-400	400	700	850	-
TB7-MBS-500	500	700	850	-
TB7-MBS-600	600	700	850	-
TB7-MBS-700	700	700	850	-
TB7-MBS-800	800	700	850	-
TB7-MBS-900	900	700	850	-
TB7-MBS-1000	1000	700	850	-
TB7-MBS-1100	1100	700	850	-
TB7-MBS-1200	1200	700	850	-
TB7-MBS-1300	1300	700	850	-
TB7-MBS-1400	1400	700	850	-
TB7-MBS-1500	1500	700	850	-
TB7-MBS-1600*	1600	700	850	-
TB7-MBS-1700*	1700	700	850	-
TB7-MBS-1800*	1800	700	850	-
TB7-MBS-1900*	1900	700	850	-
TB7-MBS-2000*	2000	700	850	-
TB7-MBS-2100*	2100	700	850	-

### 800MM DEPTH

CODE	L	D	H	BS
TB8-MBS-400	400	800	850	-
TB8-MBS-500	500	800	850	-
TB8-MBS-600	600	800	850	-
TB8-MBS-700	700	800	850	-
TB8-MBS-800	800	800	850	-
TB8-MBS-900	900	800	850	-
TB8-MBS-1000	1000	800	850	-
TB8-MBS-1100	1100	800	850	-
TB8-MBS-1200	1200	800	850	-
TB8-MBS-1300	1300	800	850	-
TB8-MBS-1400	1400	800	850	-
TB8-MBS-1500	1500	800	850	-
TB8-MBS-1600*	1600	800	850	-
TB8-MBS-1700*	1700	800	850	-
TB8-MBS-1800*	1800	800	850	-
TB8-MBS-1900*	1900	800	850	-
TB8-MBS-2000*	2000	800	850	-
TB8-MBS-2100*	2100	800	850	-

### 900MM DEPTH

CODE	L	D	H	BS
TB9-MBS-400	400	900	850	-
TB9-MBS-500	500	900	850	-
TB9-MBS-600	600	900	850	-
TB9-MBS-700	700	900	850	-
TB9-MBS-800	800	900	850	-
TB9-MBS-900	900	900	850	-
TB9-MBS-1000	1000	900	850	-
TB9-MBS-1100	1100	900	850	-
TB9-MBS-1200	1200	900	850	-
TB9-MBS-1300	1300	900	850	-
TB9-MBS-1400	1400	900	850	-
TB9-MBS-1500	1500	900	850	-
TB9-MBS-1600*	1600	900	850	-
TB9-MBS-1700*	1700	900	850	-
TB9-MBS-1800*	1800	900	850	-
TB9-MBS-1900*	1900	900	850	-
TB9-MBS-2000*	2000	900	850	-
TB9-MBS-2100*	2100	900	850	-

\*ON 6 LEGS



## WORK TABLE WITH BACKSPLASH

### 600MM DEPTH

CODE	L	D	H	BS
TBB6-BR-400	400	600	850	100
TBB6-BR-500	500	600	850	100
TBB6-BR-600	600	600	850	100
TBB6-BR-700	700	600	850	100
TBB6-BR-800	800	600	850	100
TBB6-BR-900	900	600	850	100
TBB6-BR-1000	1000	600	850	100
TBB6-BR-1100	1100	600	850	100
TBB6-BR-1200	1200	600	850	100
TBB6-BR-1300	1300	600	850	100
TBB6-BR-1400	1400	600	850	100
TBB6-BR-1500	1500	600	850	100
TBB6-BR-1600*	1600	600	850	100
TBB6-BR-1700*	1700	600	850	100
TBB6-BR-1800*	1800	600	850	100
TBB6-BR-1900*	1900	600	850	100
TBB6-BR-2000*	2000	600	850	100
TBB6-BR-2100*	2100	600	850	100

### 700MM DEPTH

CODE	L	D	H	BS
TBB7-BR-400	400	700	850	100
TBB7-BR-500	500	700	850	100
TBB7-BR-600	600	700	850	100
TBB7-BR-700	700	700	850	100
TBB7-BR-800	800	700	850	100
TBB7-BR-900	900	700	850	100
TBB7-BR-1000	1000	700	850	100
TBB7-BR-1100	1100	700	850	100
TBB7-BR-1200	1200	700	850	100
TBB7-BR-1300	1300	700	850	100
TBB7-BR-1400	1400	700	850	100
TBB7-BR-1500	1500	700	850	100
TBB7-BR-1600*	1600	700	850	100
TBB7-BR-1700*	1700	700	850	100
TBB7-BR-1800*	1800	700	850	100
TBB7-BR-1900*	1900	700	850	100
TBB7-BR-2000*	2000	700	850	100
TBB7-BR-2100*	2100	700	850	100

### 800MM DEPTH

CODE	L	D	H	BS
TBB8-BR-400	400	800	850	100
TBB8-BR-500	500	800	850	100
TBB8-BR-600	600	800	850	100
TBB8-BR-700	700	800	850	100
TBB8-BR-800	800	800	850	100
TBB8-BR-900	900	800	850	100
TBB8-BR-1000	1000	800	850	100
TBB8-BR-1100	1100	800	850	100
TBB8-BR-1200	1200	800	850	100
TBB8-BR-1300	1300	800	850	100
TBB8-BR-1400	1400	800	850	100
TBB8-BR-1500	1500	800	850	100
TBB8-BR-1600*	1600	800	850	100
TBB8-BR-1700*	1700	800	850	100
TBB8-BR-1800*	1800	800	850	100
TBB8-BR-1900*	1900	800	850	100
TBB8-BR-2000*	2000	800	850	100
TBB8-BR-2100*	2100	800	850	100

### 900MM DEPTH

CODE	L	D	H	BS
TBB9-BR-400	400	900	850	100
TBB9-BR-500	500	900	850	100
TBB9-BR-600	600	900	850	100
TBB9-BR-700	700	900	850	100
TBB9-BR-800	800	900	850	100
TBB9-BR-900	900	900	850	100
TBB9-BR-1000	1000	900	850	100
TBB9-BR-1100	1100	900	850	100
TBB9-BR-1200	1200	900	850	100
TBB9-BR-1300	1300	900	850	100
TBB9-BR-1400	1400	900	850	100
TBB9-BR-1500	1500	900	850	100
TBB9-BR-1600*	1600	900	850	100
TBB9-BR-1700*	1700	900	850	100
TBB9-BR-1800*	1800	900	850	100
TBB9-BR-1900*	1900	900	850	100
TBB9-BR-2000*	2000	900	850	100
TBB9-BR-2100*	2100	900	850	100

\*ON 6 LEGS



## WORK TABLE WITH BACKSPLASH AND BOTTOM SHELF

### 600MM DEPTH

CODE	L	D	H	BS
TBB6-BS-400	400	600	850	100
TBB6-BS-500	500	600	850	100
TBB6-BS-600	600	600	850	100
TBB6-BS-700	700	600	850	100
TBB6-BS-800	800	600	850	100
TBB6-BS-900	900	600	850	100
TBB6-BS-1000	1000	600	850	100
TBB6-BS-1100	1100	600	850	100
TBB6-BS-1200	1200	600	850	100
TBB6-BS-1300	1300	600	850	100
TBB6-BS-1400	1400	600	850	100
TBB6-BS-1500	1500	600	850	100
TBB6-BS-1600*	1600	600	850	100
TBB6-BS-1700*	1700	600	850	100
TBB6-BS-1800*	1800	600	850	100
TBB6-BS-1900*	1900	600	850	100
TBB6-BS-2000*	2000	600	850	100
TBB6-BS-2100*	2100	600	850	100

### 700MM DEPTH

CODE	L	D	H	BS
TBB7-BS-400	400	700	850	100
TBB7-BS-500	500	700	850	100
TBB7-BS-600	600	700	850	100
TBB7-BS-700	700	700	850	100
TBB7-BS-800	800	700	850	100
TBB7-BS-900	900	700	850	100
TBB7-BS-1000	1000	700	850	100
TBB7-BS-1100	1100	700	850	100
TBB7-BS-1200	1200	700	850	100
TBB7-BS-1300	1300	700	850	100
TBB7-BS-1400	1400	700	850	100
TBB7-BS-1500	1500	700	850	100
TBB7-BS-1600*	1600	700	850	100
TBB7-BS-1700*	1700	700	850	100
TBB7-BS-1800*	1800	700	850	100
TBB7-BS-1900*	1900	700	850	100
TBB7-BS-2000*	2000	700	850	100
TBB7-BS-2100*	2100	700	850	100

### 800MM DEPTH

CODE	L	D	H	BS
TBB8-BS-400	400	800	850	100
TBB8-BS-500	500	800	850	100
TBB8-BS-600	600	800	850	100
TBB8-BS-700	700	800	850	100
TBB8-BS-800	800	800	850	100
TBB8-BS-900	900	800	850	100
TBB8-BS-1000	1000	800	850	100
TBB8-BS-1100	1100	800	850	100
TBB8-BS-1200	1200	800	850	100
TBB8-BS-1300	1300	800	850	100
TBB8-BS-1400	1400	800	850	100
TBB8-BS-1500	1500	800	850	100
TBB8-BS-1600*	1600	800	850	100
TBB8-BS-1700*	1700	800	850	100
TBB8-BS-1800*	1800	800	850	100
TBB8-BS-1900*	1900	800	850	100
TBB8-BS-2000*	2000	800	850	100
TBB8-BS-2100*	2100	800	850	100

### 900MM DEPTH

CODE	L	D	H	BS
TBB9-BS-400	400	900	850	100
TBB9-BS-500	500	900	850	100
TBB9-BS-600	600	900	850	100
TBB9-BS-700	700	900	850	100
TBB9-BS-800	800	900	850	100
TBB9-BS-900	900	900	850	100
TBB9-BS-1000	1000	900	850	100
TBB9-BS-1100	1100	900	850	100
TBB9-BS-1200	1200	900	850	100
TBB9-BS-1300	1300	900	850	100
TBB9-BS-1400	1400	900	850	100
TBB9-BS-1500	1500	900	850	100
TBB9-BS-1600*	1600	900	850	100
TBB9-BS-1700*	1700	900	850	100
TBB9-BS-1800*	1800	900	850	100
TBB9-BS-1900*	1900	900	850	100
TBB9-BS-2000*	2000	900	850	100
TBB9-BS-2100*	2100	900	850	100

\*ON 6 LEGS



## WORK TABLE WITH BACKSPLASH AND MID AND BOTTOM SHELF

### 600MM DEPTH

CODE	L	D	H	BS
TBB6-MBS-400	400	600	850	100
TBB6-MBS-500	500	600	850	100
TBB6-MBS-600	600	600	850	100
TBB6-MBS-700	700	600	850	100
TBB6-MBS-800	800	600	850	100
TBB6-MBS-900	900	600	850	100
TBB6-MBS-1000	1000	600	850	100
TBB6-MBS-1100	1100	600	850	100
TBB6-MBS-1200	1200	600	850	100
TBB6-MBS-1300	1300	600	850	100
TBB6-MBS-1400	1400	600	850	100
TBB6-MBS-1500	1500	600	850	100
TBB6-MBS-1600*	1600	600	850	100
TBB6-MBS-1700*	1700	600	850	100
TBB6-MBS-1800*	1800	600	850	100
TBB6-MBS-1900*	1900	600	850	100
TBB6-MBS-2000*	2000	600	850	100
TBB6-MBS-2100*	2100	600	850	100

### 700MM DEPTH

CODE	L	D	H	BS
TBB7-MBS-400	400	700	850	100
TBB7-MBS-500	500	700	850	100
TBB7-MBS-600	600	700	850	100
TBB7-MBS-700	700	700	850	100
TBB7-MBS-800	800	700	850	100
TBB7-MBS-900	900	700	850	100
TBB7-MBS-1000	1000	700	850	100
TBB7-MBS-1100	1100	700	850	100
TBB7-MBS-1200	1200	700	850	100
TBB7-MBS-1300	1300	700	850	100
TBB7-MBS-1400	1400	700	850	100
TBB7-MBS-1500	1500	700	850	100
TBB7-MBS-1600*	1600	700	850	100
TBB7-MBS-1700*	1700	700	850	100
TBB7-MBS-1800*	1800	700	850	100
TBB7-MBS-1900*	1900	700	850	100
TBB7-MBS-2000*	2000	700	850	100
TBB7-MBS-2100*	2100	700	850	100

### 800MM DEPTH

CODE	L	D	H	BS
TBB8-MBS-400	400	800	850	100
TBB8-MBS-500	500	800	850	100
TBB8-MBS-600	600	800	850	100
TBB8-MBS-700	700	800	850	100
TBB8-MBS-800	800	800	850	100
TBB8-MBS-900	900	800	850	100
TBB8-MBS-1000	1000	800	850	100
TBB8-MBS-1100	1100	800	850	100
TBB8-MBS-1200	1200	800	850	100
TBB8-MBS-1300	1300	800	850	100
TBB8-MBS-1400	1400	800	850	100
TBB8-MBS-1500	1500	800	850	100
TBB8-MBS-1600*	1600	800	850	100
TBB8-MBS-1700*	1700	800	850	100
TBB8-MBS-1800*	1800	800	850	100
TBB8-MBS-1900*	1900	800	850	100
TBB8-MBS-2000*	2000	800	850	100
TBB8-MBS-2100*	2100	800	850	100

### 900MM DEPTH

CODE	L	D	H	BS
TBB9-MBS-400	400	900	850	100
TBB9-MBS-500	500	900	850	100
TBB9-MBS-600	600	900	850	100
TBB9-MBS-700	700	900	850	100
TBB9-MBS-800	800	900	850	100
TBB9-MBS-900	900	900	850	100
TBB9-MBS-1000	1000	900	850	100
TBB9-MBS-1100	1100	900	850	100
TBB9-MBS-1200	1200	900	850	100
TBB9-MBS-1300	1300	900	850	100
TBB9-MBS-1400	1400	900	850	100
TBB9-MBS-1500	1500	900	850	100
TBB9-MBS-1600*	1600	900	850	100
TBB9-MBS-1700*	1700	900	850	100
TBB9-MBS-1800*	1800	900	850	100
TBB9-MBS-1900*	1900	900	850	100
TBB9-MBS-2000*	2000	900	850	100
TBB9-MBS-2100*	2100	900	850	100

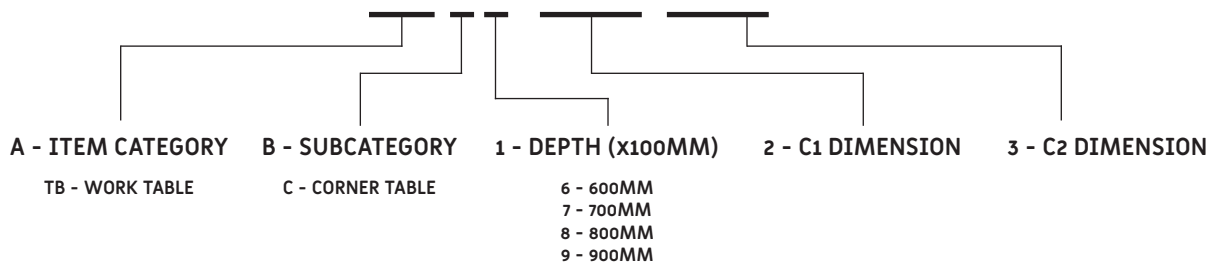
\*ON 6 LEGS



## CORNER WORK TABLE WITH BACKSPLASH AND BOTTOM SHELF

MODEL NUMBER CODE

# AAB1-222-333



### 600MM DEPTH

CODE	W1	W2	C1	C2	H	BS
TBC6-100-100	600	600	100	100	850	100
TBC6-100-200	600	600	100	200	850	100
TBC6-100-300	600	600	100	300	850	100
TBC6-200-100	600	600	200	100	850	200
TBC6-300-100	600	600	300	100	850	300
TBC6-200-200	600	600	200	200	850	200
TBC6-300-300	600	600	300	300	850	300

### 700MM DEPTH

CODE	W1	W2	C1	C2	H	BS
TBC7-100-100	700	700	100	100	850	100
TBC7-100-200	700	700	100	200	850	100
TBC7-100-300	700	700	100	300	850	100
TBC7-200-100	700	700	200	100	850	200
TBC7-300-100	700	700	300	100	850	300
TBC7-200-200	700	700	200	200	850	200
TBC7-300-300	700	700	300	300	850	300

### 800MM DEPTH

CODE	W1	W2	C1	C2	H	BS
TBC8-100-100	800	800	100	100	850	100
TBC8-100-200	800	800	100	200	850	100
TBC8-100-300	800	800	100	300	850	100
TBC8-200-100	800	800	200	100	850	200
TBC8-300-100	800	800	300	100	850	300
TBC8-200-200	800	800	200	200	850	200
TBC8-300-300	800	800	300	300	850	300

### 900MM DEPTH

CODE	W1	W2	C1	C2	H	BS
TBC9-100-100	900	900	100	100	850	100
TBC9-100-200	900	900	100	200	850	100
TBC9-100-300	900	900	100	300	850	100
TBC9-200-100	900	900	200	100	850	200
TBC9-300-100	900	900	300	100	850	300
TBC9-200-200	900	900	200	200	850	200
TBC9-300-300	900	900	300	300	850	300

## CONSISTENT BAKING WITH A PRESS OF A BUTTON.



### TECNOEKA MKF 1064 TS ELECTRIC COMBI OVEN

MILLENNIAL means to think big, to allow you to always cook grand. With EKF 1064 TS you can choose between convection cooking and direct steam combined cooking. You will have ten trays, nine cooking steps, five speeds and 500 recipes.

- Made in Italy
- 10 rack capacity
- 850 x 1035 x 1130 mm
- 17 kW
- 380V / 3Ph

# WORK TABLE WITH DOORS

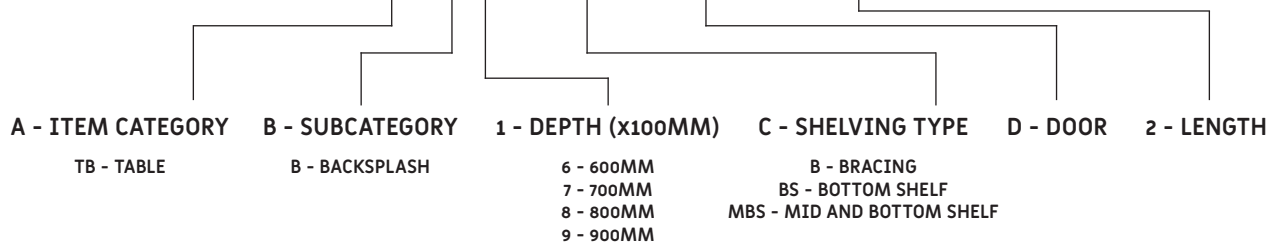
016



- Fully welded.
- 304 stainless steel.
- Rugged heavy duty design.
- 1.5 mm thick stainless steel top.
- Adjustable stainless steel footing.
- Doors made of stainless steel to avoid wear and tear.
- Doors shut close by magnetic strips.

## MODEL NUMBER CODE

# AAB1-CCDDDD-2222







## WORK TABLE WITH ONE DOOR

600MM DEPTH

CODE	L	D	H	BS
TB6-BDSB-400	400	600	850	-
TB6-BDSB-500	500	600	850	-
TB6-BDSB-600	600	600	850	-

700MM DEPTH

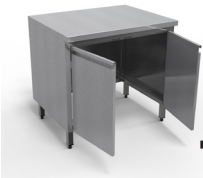
CODE	L	D	H	BS
TB7-BDSB-400	400	700	850	-
TB7-BDSB-500	500	700	850	-
TB7-BDSB-600	600	700	850	-

800MM DEPTH

CODE	L	D	H	BS
TB8-BDSB-400	400	800	850	-
TB8-BDSB-500	500	800	850	-
TB8-BDSB-600	600	800	850	-

900MM DEPTH

CODE	L	D	H	BS
TB9-BDSB-400	400	900	850	-
TB9-BDSB-500	500	900	850	-
TB9-BDSB-600	600	900	850	-



## WORK TABLE WITH TWO DOORS

600MM DEPTH

CODE	L	D	H	BS
TB6-BDSB-700	700	600	850	-
TB6-BDSB-800	800	600	850	-
TB6-BDSB-900	900	600	850	-
TB6-BDSB-1000	1000	600	850	-

700MM DEPTH

CODE	L	D	H	BS
TB7-BDSB-700	700	700	850	-
TB7-BDSB-800	800	700	850	-
TB7-BDSB-900	900	700	850	-
TB7-BDSB-1000	1000	700	850	-

800MM DEPTH

CODE	L	D	H	BS
TB8-BDSB-700	700	800	850	-
TB8-BDSB-800	800	800	850	-
TB8-BDSB-900	900	800	850	-
TB8-BDSB-1000	1000	800	850	-

900MM DEPTH

CODE	L	D	H	BS
TB9-BDSB-700	700	900	850	-
TB9-BDSB-800	800	900	850	-
TB9-BDSB-900	900	900	850	-
TB9-BDSB-1000	1000	900	850	-



## WORK TABLE WITH THREE DOORS

600MM DEPTH

CODE	L	D	H	BS
TB6-BDSB-1100	1100	600	850	-
TB6-BDSB-1200	1200	600	850	-
TB6-BDSB-1300	1300	600	850	-
TB6-BDSB-1400	1400	600	850	-

700MM DEPTH

CODE	L	D	H	BS
TB7-BDSB-1100	1100	700	850	-
TB7-BDSB-1200	1200	700	850	-
TB7-BDSB-1300	1300	700	850	-
TB7-BDSB-1400	1400	700	850	-

800MM DEPTH

CODE	L	D	H	BS
TB8-BDSB-1100	1100	800	850	-
TB8-BDSB-1200	1200	800	850	-
TB8-BDSB-1300	1300	800	850	-
TB8-BDSB-1400	1400	800	850	-

900MM DEPTH

CODE	L	D	H	BS
TB9-BDSB-1100	1100	900	850	-
TB9-BDSB-1200	1200	900	850	-
TB9-BDSB-1300	1300	900	850	-
TB9-BDSB-1400	1400	900	850	-



## WORK TABLE WITH FOUR DOORS

600MM DEPTH

CODE	L	D	H	BS
TB6-BDSB-1500*	1500	600	850	-
TB6-BDSB-1600*	1600	600	850	-
TB6-BDSB-1700*	1700	600	850	-
TB6-BDSB-1800*	1800	600	850	-

700MM DEPTH

CODE	L	D	H	BS
TB7-BDSB-1500*	1500	700	850	-
TB7-BDSB-1600*	1600	700	850	-
TB7-BDSB-1700*	1700	700	850	-
TB7-BDSB-1800*	1800	700	850	-

800MM DEPTH

CODE	L	D	H	BS
TB8-BDSB-1500*	1500	800	850	-
TB8-BDSB-1600*	1600	800	850	-
TB8-BDSB-1700*	1700	800	850	-
TB8-BDSB-1800*	1800	800	850	-

900MM DEPTH

CODE	L	D	H	BS
TB9-BDSB-1500*	1500	900	850	-
TB9-BDSB-1600*	1600	900	850	-
TB9-BDSB-1700*	1700	900	850	-
TB9-BDSB-1800*	1800	900	850	-

\*ON 6 LEGS



## WORK TABLE WITH ONE DOOR AND BOTTOM SHELF

600MM DEPTH

CODE	L	D	H	BS
TB6-BSDSB-400	400	600	850	-
TB6-BSDSB-500	500	600	850	-
TB6-BSDSB-600	600	600	850	-

700MM DEPTH

CODE	L	D	H	BS
TB7-BSDSB-400	400	700	850	-
TB7-BSDSB-500	500	700	850	-
TB7-BSDSB-600	600	700	850	-

800MM DEPTH

CODE	L	D	H	BS
TB8-BSDSB-400	400	800	850	-
TB8-BSDSB-500	500	800	850	-
TB8-BSDSB-600	600	800	850	-

900MM DEPTH

CODE	L	D	H	BS
TB9-BSDSB-400	400	900	850	-
TB9-BSDSB-500	500	900	850	-
TB9-BSDSB-600	600	900	850	-



## WORK TABLE WITH TWO DOORS AND BOTTOM SHELF

600MM DEPTH

CODE	L	D	H	BS
TB6-BSDSB-700	700	600	850	-
TB6-BSDSB-800	800	600	850	-
TB6-BSDSB-900	900	600	850	-
TB6-BSDSB-1000	1000	600	850	-

700MM DEPTH

CODE	L	D	H	BS
TB7-BSDSB-700	700	700	850	-
TB7-BSDSB-800	800	700	850	-
TB7-BSDSB-900	900	700	850	-
TB7-BSDSB-1000	1000	700	850	-

800MM DEPTH

CODE	L	D	H	BS
TB8-BSDSB-700	700	800	850	-
TB8-BSDSB-800	800	800	850	-
TB8-BSDSB-900	900	800	850	-
TB8-BSDSB-1000	1000	800	850	-

900MM DEPTH

CODE	L	D	H	BS
TB9-BSDSB-700	700	900	850	-
TB9-BSDSB-800	800	900	850	-
TB9-BSDSB-900	900	900	850	-
TB9-BSDSB-1000	1000	900	850	-



## WORK TABLE WITH THREE DOORS AND BOTTOM SHELF

600MM DEPTH

CODE	L	D	H	BS
TB6-BSDSB-1100	1100	600	850	-
TB6-BSDSB-1200	1200	600	850	-
TB6-BSDSB-1300	1300	600	850	-
TB6-BSDSB-1400	1400	600	850	-

700MM DEPTH

CODE	L	D	H	BS
TB7-BSDSB-1100	1100	700	850	-
TB7-BSDSB-1200	1200	700	850	-
TB7-BSDSB-1300	1300	700	850	-
TB7-BSDSB-1400	1400	700	850	-

800MM DEPTH

CODE	L	D	H	BS
TB8-BSDSB-1100	1100	800	850	-
TB8-BSDSB-1200	1200	800	850	-
TB8-BSDSB-1300	1300	800	850	-
TB8-BSDSB-1400	1400	800	850	-

900MM DEPTH

CODE	L	D	H	BS
TB9-BSDSB-1100	1100	900	850	-
TB9-BSDSB-1200	1200	900	850	-
TB9-BSDSB-1300	1300	900	850	-
TB9-BSDSB-1400	1400	900	850	-



## WORK TABLE WITH FOUR DOORS AND BOTTOM SHELF

600MM DEPTH

CODE	L	D	H	BS
TB6-BSDSB-1500*	1500	600	850	-
TB6-BSDSB-1600*	1600	600	850	-
TB6-BSDSB-1700*	1700	600	850	-
TB6-BSDSB-1800*	1800	600	850	-

700MM DEPTH

CODE	L	D	H	BS
TB7-BSDSB-1500*	1500	700	850	-
TB7-BSDSB-1600*	1600	700	850	-
TB7-BSDSB-1700*	1700	700	850	-
TB7-BSDSB-1800*	1800	700	850	-

800MM DEPTH

CODE	L	D	H	BS
TB8-BSDSB-1500*	1500	800	850	-
TB8-BSDSB-1600*	1600	800	850	-
TB8-BSDSB-1700*	1700	800	850	-
TB8-BSDSB-1800*	1800	800	850	-

900MM DEPTH

CODE	L	D	H	BS
TB9-BSDSB-1500*	1500	900	850	-
TB9-BSDSB-1600*	1600	900	850	-
TB9-BSDSB-1700*	1700	900	850	-
TB9-BSDSB-1800*	1800	900	850	-

\*ON 6 LEGS



## WORK TABLE WITH ONE DOOR AND MID AND BOTTOM SHELF

600MM DEPTH

CODE	L	D	H	BS
TB6-MBSDSB-400	400	600	850	-
TB6-MBSDSB-500	500	600	850	-
TB6-MBSDSB-600	600	600	850	-

700MM DEPTH

CODE	L	D	H	BS
TB7-MBSDSB-400	400	700	850	-
TB7-MBSDSB-500	500	700	850	-
TB7-MBSDSB-600	600	700	850	-

800MM DEPTH

CODE	L	D	H	BS
TB8-MBSDSB-400	400	800	850	-
TB8-MBSDSB-500	500	800	850	-
TB8-MBSDSB-600	600	800	850	-

900MM DEPTH

CODE	L	D	H	BS
TB9-MBSDSB-400	400	900	850	-
TB9-MBSDSB-500	500	900	850	-
TB9-MBSDSB-600	600	900	850	-



## WORK TABLE WITH TWO DOOR AND MID AND BOTTOM SHELF

600MM DEPTH

CODE	L	D	H	BS
TB6-MBSDSB-700	700	600	850	-
TB6-MBSDSB-800	800	600	850	-
TB6-MBSDSB-900	900	600	850	-
TB6-MBSDSB-1000	1000	600	850	-

700MM DEPTH

CODE	L	D	H	BS
TB7-MBSDSB-700	700	700	850	-
TB7-MBSDSB-800	800	700	850	-
TB7-MBSDSB-900	900	700	850	-
TB7-MBSDSB-1000	1000	700	850	-

800MM DEPTH

CODE	L	D	H	BS
TB8-MBSDSB-700	700	800	850	-
TB8-MBSDSB-800	800	800	850	-
TB8-MBSDSB-900	900	800	850	-
TB8-MBSDSB-1000	1000	800	850	-

900MM DEPTH

CODE	L	D	H	BS
TB9-MBSDSB-700	700	900	850	-
TB9-MBSDSB-800	800	900	850	-
TB9-MBSDSB-900	900	900	850	-
TB9-MBSDSB-1000	1000	900	850	-



## WORK TABLE WITH THREE DOOR AND MID AND BOTTOM SHELF

600MM DEPTH

CODE	L	D	H	BS
TB6-MBSDSB-1100	1100	600	850	-
TB6-MBSDSB-1200	1200	600	850	-
TB6-MBSDSB-1300	1300	600	850	-
TB6-MBSDSB-1400	1400	600	850	-

700MM DEPTH

CODE	L	D	H	BS
TB7-MBSDSB-1100	1100	700	850	-
TB7-MBSDSB-1200	1200	700	850	-
TB7-MBSDSB-1300	1300	700	850	-
TB7-MBSDSB-1400	1400	700	850	-

800MM DEPTH

CODE	L	D	H	BS
TB8-MBSDSB-1100	1100	800	850	-
TB8-MBSDSB-1200	1200	800	850	-
TB8-MBSDSB-1300	1300	800	850	-
TB8-MBSDSB-1400	1400	800	850	-

900MM DEPTH

CODE	L	D	H	BS
TB9-MBSDSB-1100	1100	900	850	-
TB9-MBSDSB-1200	1200	900	850	-
TB9-MBSDSB-1300	1300	900	850	-
TB9-MBSDSB-1400	1400	900	850	-



## WORK TABLE WITH FOUR DOOR AND MID AND BOTTOM SHELF

600MM DEPTH

CODE	L	D	H	BS
TB6-MBSDSB-1500*	1500	600	850	-
TB6-MBSDSB-1600*	1600	600	850	-
TB6-MBSDSB-1700*	1700	600	850	-
TB6-MBSDSB-1800*	1800	600	850	-

700MM DEPTH

CODE	L	D	H	BS
TB7-MBSDSB-1500*	1500	700	850	-
TB7-MBSDSB-1600*	1600	700	850	-
TB7-MBSDSB-1700*	1700	700	850	-
TB7-MBSDSB-1800*	1800	700	850	-

800MM DEPTH

CODE	L	D	H	BS
TB8-MBSDSB-1500*	1500	800	850	-
TB8-MBSDSB-1600*	1600	800	850	-
TB8-MBSDSB-1700*	1700	800	850	-
TB8-MBSDSB-1800*	1800	800	850	-

900MM DEPTH

CODE	L	D	H	BS
TB9-MBSDSB-1500*	1500	900	850	-
TB9-MBSDSB-1600*	1600	900	850	-
TB9-MBSDSB-1700*	1700	900	850	-
TB9-MBSDSB-1800*	1800	900	850	-

\*ON 6 LEGS



## WORK TABLE WITH ONE DOOR AND BACKSPLASH

600MM DEPTH

CODE	L	D	H	BS
TBB6-BDSB-400	400	600	850	100
TBB6-BDSB-500	500	600	850	100
TBB6-BDSB-600	600	600	850	100

700MM DEPTH

CODE	L	D	H	BS
TBB7-BDSB-400	400	700	850	100
TBB7-BDSB-500	500	700	850	100
TBB7-BDSB-600	600	700	850	100

800MM DEPTH

CODE	L	D	H	BS
TBB8-BDSB-400	400	800	850	100
TBB8-BDSB-500	500	800	850	100
TBB8-BDSB-600	600	800	850	100

900MM DEPTH

CODE	L	D	H	BS
TBB9-BDSB-400	400	900	850	100
TBB9-BDSB-500	500	900	850	100
TBB9-BDSB-600	600	900	850	100



## WORK TABLE WITH TWO DOORS AND BACKSPLASH

600MM DEPTH

CODE	L	D	H	BS
TBB6-BDSB-700	700	600	850	100
TBB6-BDSB-800	800	600	850	100
TBB6-BDSB-900	900	600	850	100
TBB6-BDSB-1000	1000	600	850	100

700MM DEPTH

CODE	L	D	H	BS
TBB7-BDSB-700	700	700	850	100
TBB7-BDSB-800	800	700	850	100
TBB7-BDSB-900	900	700	850	100
TBB7-BDSB-1000	1000	700	850	100

800MM DEPTH

CODE	L	D	H	BS
TBB8-BDSB-700	700	800	850	100
TBB8-BDSB-800	800	800	850	100
TBB8-BDSB-900	900	800	850	100
TBB8-BDSB-1000	1000	800	850	100

900MM DEPTH

CODE	L	D	H	BS
TBB9-BDSB-700	700	900	850	100
TBB9-BDSB-800	800	900	850	100
TBB9-BDSB-900	900	900	850	100
TBB9-BDSB-1000	1000	900	850	100



## WORK TABLE WITH THREE DOORS AND BACKSPLASH

600MM DEPTH

CODE	L	D	H	BS
TBB6-BDSB-1100	1100	600	850	100
TBB6-BDSB-1200	1200	600	850	100
TBB6-BDSB-1300	1300	600	850	100
TBB6-BDSB-1400	1400	600	850	100

700MM DEPTH

CODE	L	D	H	BS
TBB7-BDSB-1100	1100	700	850	100
TBB7-BDSB-1200	1200	700	850	100
TBB7-BDSB-1300	1300	700	850	100
TBB7-BDSB-1400	1400	700	850	100

800MM DEPTH

CODE	L	D	H	BS
TBB8-BDSB-1100	1100	800	850	100
TBB8-BDSB-1200	1200	800	850	100
TBB8-BDSB-1300	1300	800	850	100
TBB8-BDSB-1400	1400	800	850	100

900MM DEPTH

CODE	L	D	H	BS
TBB9-BDSB-1100	1100	900	850	100
TBB9-BDSB-1200	1200	900	850	100
TBB9-BDSB-1300	1300	900	850	100
TBB9-BDSB-1400	1400	900	850	100



## WORK TABLE WITH FOUR DOORS AND BACKSPLASH

600MM DEPTH

CODE	L	D	H	BS
TBB6-BDSB-1500*	1500	600	850	100
TBB6-BDSB-1600*	1600	600	850	100
TBB6-BDSB-1700*	1700	600	850	100
TBB6-BDSB-1800*	1800	600	850	100

700MM DEPTH

CODE	L	D	H	BS
TBB7-BDSB-1500*	1500	700	850	100
TBB7-BDSB-1600*	1600	700	850	100
TBB7-BDSB-1700*	1700	700	850	100
TBB7-BDSB-1800*	1800	700	850	100

800MM DEPTH

CODE	L	D	H	BS
TBB8-BDSB-1500*	1500	800	850	100
TBB8-BDSB-1600*	1600	800	850	100
TBB8-BDSB-1700*	1700	800	850	100
TBB8-BDSB-1800*	1800	800	850	100

900MM DEPTH

CODE	L	D	H	BS
TBB9-BDSB-1500*	1500	900	850	100
TBB9-BDSB-1600*	1600	900	850	100
TBB9-BDSB-1700*	1700	900	850	100
TBB9-BDSB-1800*	1800	900	850	100

\*ON 6 LEGS



## WORK TABLE WITH ONE DOOR AND BACKSPLASH AND BOTTOM SHELF

600MM DEPTH

CODE	L	D	H	BS
TBB6-BSDSB-400	400	600	850	100
TBB6-BSDSB-500	500	600	850	100
TBB6-BSDSB-600	600	600	850	100

700MM DEPTH

CODE	L	D	H	BS
TBB7-BSDSB-400	400	700	850	100
TBB7-BSDSB-500	500	700	850	100
TBB7-BSDSB-600	600	700	850	100

800MM DEPTH

CODE	L	D	H	BS
TBB8-BSDSB-400	400	800	850	100
TBB8-BSDSB-500	500	800	850	100
TBB8-BSDSB-600	600	800	850	100

900MM DEPTH

CODE	L	D	H	BS
TBB9-BSDSB-400	400	900	850	100
TBB9-BSDSB-500	500	900	850	100
TBB9-BSDSB-600	600	900	850	100



## WORK TABLE WITH TWO DOOR AND BACKSPLASH AND BOTTOM SHELF

600MM DEPTH

CODE	L	D	H	BS
TBB6-BSDSB-700	700	600	850	100
TBB6-BSDSB-800	800	600	850	100
TBB6-BSDSB-900	900	600	850	100
TBB6-BSDSB-1000	1000	600	850	100

700MM DEPTH

CODE	L	D	H	BS
TBB7-BSDSB-700	700	700	850	100
TBB7-BSDSB-800	800	700	850	100
TBB7-BSDSB-900	900	700	850	100
TBB7-BSDSB-1000	1000	700	850	100

800MM DEPTH

CODE	L	D	H	BS
TBB8-BSDSB-700	700	800	850	100
TBB8-BSDSB-800	800	800	850	100
TBB8-BSDSB-900	900	800	850	100
TBB8-BSDSB-1000	1000	800	850	100

900MM DEPTH

CODE	L	D	H	BS
TBB9-BSDSB-700	700	900	850	100
TBB9-BSDSB-800	800	900	850	100
TBB9-BSDSB-900	900	900	850	100
TBB9-BSDSB-1000	1000	900	850	100



## WORK TABLE WITH THREE DOOR AND BACKSPLASH AND BOTTOM SHELF

600MM DEPTH

CODE	L	D	H	BS
TBB6-BSDSB-1100	1100	600	850	100
TBB6-BSDSB-1200	1200	600	850	100
TBB6-BSDSB-1300	1300	600	850	100
TBB6-BSDSB-1400	1400	600	850	100

700MM DEPTH

CODE	L	D	H	BS
TBB7-BSDSB-1100	1100	700	850	100
TBB7-BSDSB-1200	1200	700	850	100
TBB7-BSDSB-1300	1300	700	850	100
TBB7-BSDSB-1400	1400	700	850	100

800MM DEPTH

CODE	L	D	H	BS
TBB8-BSDSB-1100	1100	800	850	100
TBB8-BSDSB-1200	1200	800	850	100
TBB8-BSDSB-1300	1300	800	850	100
TBB8-BSDSB-1400	1400	800	850	100

900MM DEPTH

CODE	L	D	H	BS
TBB9-BSDSB-1100	1100	900	850	100
TBB9-BSDSB-1200	1200	900	850	100
TBB9-BSDSB-1300	1300	900	850	100
TBB9-BSDSB-1400	1400	900	850	100



## WORK TABLE WITH FOUR DOOR AND BACKSPLASH AND BOTTOM SHELF

600MM DEPTH

CODE	L	D	H	BS
TBB6-BSDSB-1500*	1500	600	850	100
TBB6-BSDSB-1600*	1600	600	850	100
TBB6-BSDSB-1700*	1700	600	850	100
TBB6-BSDSB-1800*	1800	600	850	100

700MM DEPTH

CODE	L	D	H	BS
TBB7-BSDSB-1500*	1500	700	850	100
TBB7-BSDSB-1600*	1600	700	850	100
TBB7-BSDSB-1700*	1700	700	850	100
TBB7-BSDSB-1800*	1800	700	850	100

800MM DEPTH

CODE	L	D	H	BS
TBB8-BSDSB-1500*	1500	800	850	100
TBB8-BSDSB-1600*	1600	800	850	100
TBB8-BSDSB-1700*	1700	800	850	100
TBB8-BSDSB-1800*	1800	800	850	100

900MM DEPTH

CODE	L	D	H	BS
TBB9-BSDSB-1500*	1500	900	850	100
TBB9-BSDSB-1600*	1600	900	850	100
TBB9-BSDSB-1700*	1700	900	850	100
TBB9-BSDSB-1800*	1800	900	850	100

\*ON 6 LEGS



## WORK TABLE WITH ONE DOOR AND BACKSPLASH AND MID AND BOTTOM SHELF

600MM DEPTH

CODE	L	D	H	BS
TBB6-MBSDSB-400	400	600	850	100
TBB6-MBSDSB-500	500	600	850	100
TBB6-MBSDSB-600	600	600	850	100

700MM DEPTH

CODE	L	D	H	BS
TBB7-MBSDSB-400	400	700	850	100
TBB7-MBSDSB-500	500	700	850	100
TBB7-MBSDSB-600	600	700	850	100

800MM DEPTH

CODE	L	D	H	BS
TBB8-MBSDSB-400	400	800	850	100
TBB8-MBSDSB-500	500	800	850	100
TBB8-MBSDSB-600	600	800	850	100

900MM DEPTH

CODE	L	D	H	BS
TBB9-MBSDSB-400	400	900	850	100
TBB9-MBSDSB-500	500	900	850	100
TBB9-MBSDSB-600	600	900	850	100



## WORK TABLE WITH TWO DOOR AND BACKSPLASH AND MID AND BOTTOM SHELF

600MM DEPTH

CODE	L	D	H	BS
TBB6-MBSDSB-700	700	600	850	100
TBB6-MBSDSB-800	800	600	850	100
TBB6-MBSDSB-900	900	600	850	100
TBB6-MBSDSB-1000	1000	600	850	100

700MM DEPTH

CODE	L	D	H	BS
TBB7-MBSDSB-700	700	700	850	100
TBB7-MBSDSB-800	800	700	850	100
TBB7-MBSDSB-900	900	700	850	100
TBB7-MBSDSB-1000	1000	700	850	100

800MM DEPTH

CODE	L	D	H	BS
TBB8-MBSDSB-700	700	800	850	100
TBB8-MBSDSB-800	800	800	850	100
TBB8-MBSDSB-900	900	800	850	100
TBB8-MBSDSB-1000	1000	800	850	100

900MM DEPTH

CODE	L	D	H	BS
TBB9-MBSDSB-700	700	900	850	100
TBB9-MBSDSB-800	800	900	850	100
TBB9-MBSDSB-900	900	900	850	100
TBB9-MBSDSB-1000	1000	900	850	100



## WORK TABLE WITH THREE DOOR AND BACKSPLASH AND MID AND BOTTOM SHELF

600MM DEPTH

CODE	L	D	H	BS
TBB6-MBSDSB-1100	1100	600	850	100
TBB6-MBSDSB-1200	1200	600	850	100
TBB6-MBSDSB-1300	1300	600	850	100
TBB6-MBSDSB-1400	1400	600	850	100

700MM DEPTH

CODE	L	D	H	BS
TBB7-MBSDSB-1100	1100	700	850	100
TBB7-MBSDSB-1200	1200	700	850	100
TBB7-MBSDSB-1300	1300	700	850	100
TBB7-MBSDSB-1400	1400	700	850	100

800MM DEPTH

CODE	L	D	H	BS
TBB8-MBSDSB-1100	1100	800	850	100
TBB8-MBSDSB-1200	1200	800	850	100
TBB8-MBSDSB-1300	1300	800	850	100
TBB8-MBSDSB-1400	1400	800	850	100

900MM DEPTH

CODE	L	D	H	BS
TBB9-MBSDSB-1100	1100	900	850	100
TBB9-MBSDSB-1200	1200	900	850	100
TBB9-MBSDSB-1300	1300	900	850	100
TBB9-MBSDSB-1400	1400	900	850	100



## WORK TABLE WITH FOUR DOOR AND BACKSPLASH AND MID AND BOTTOM SHELF

600MM DEPTH

CODE	L	D	H	BS
TBB6-MBSDSB-1500*	1500	600	850	100
TBB6-MBSDSB-1600*	1600	600	850	100
TBB6-MBSDSB-1700*	1700	600	850	100
TBB6-MBSDSB-1800*	1800	600	850	100

700MM DEPTH

CODE	L	D	H	BS
TBB7-MBSDSB-1500*	1500	700	850	100
TBB7-MBSDSB-1600*	1600	700	850	100
TBB7-MBSDSB-1700*	1700	700	850	100
TBB7-MBSDSB-1800*	1800	700	850	100

800MM DEPTH

CODE	L	D	H	BS
TBB8-MBSDSB-1500*	1500	800	850	100
TBB8-MBSDSB-1600*	1600	800	850	100
TBB8-MBSDSB-1700*	1700	800	850	100
TBB8-MBSDSB-1800*	1800	800	850	100

900MM DEPTH

CODE	L	D	H	BS
TBB9-MBSDSB-1500*	1500	900	850	100
TBB9-MBSDSB-1600*	1600	900	850	100
TBB9-MBSDSB-1700*	1700	900	850	100
TBB9-MBSDSB-1800*	1800	900	850	100

\*ON 6 LEGS

**DISPLAY YOUR GELATO IN THE BEST WAY. THE IFI WAY.**



**PANORAMA**



**BIT**



**LUMIERE**



**TONDA**



**SAM80**



**SCREEN**



**CUBIKA**



**AKTIVA**



**POZZETTI**

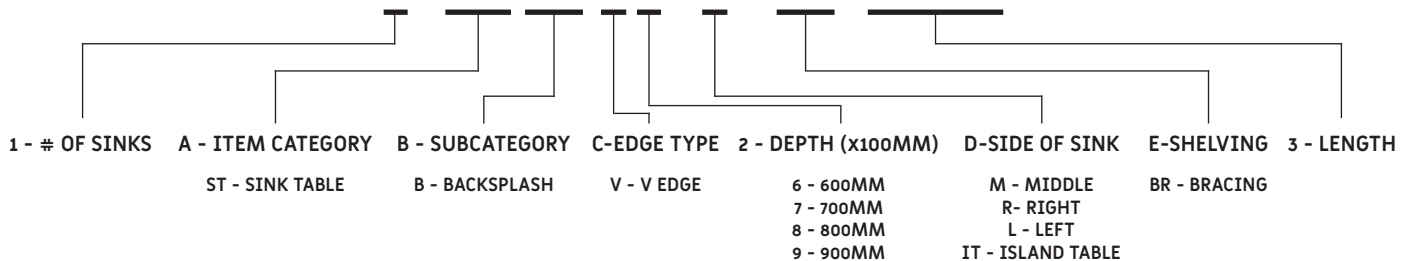
# PREPARATION SINK TABLE<sub>024</sub>



- Diecast stamped sink.
- Fully welded.
- 304 stainless steel.
- Rugged heavy duty design.
- 1.5 mm thick stainless steel top with hairline finish.
- Adjustable stainless steel footing.
- HACCP Cover.
- Faucets not included.

## MODEL NUMBER CODE

# 1-AABBC2-D-EE-3333







## PREPARATION SINK TABLE SQUARE EDGE WITH 1 SINK (MIDDLE)

600MM DEPTH

CODE	L	D	H	BS	SINK DIM.
1-STBB6-M-BR-1100	1100	600	850	100	400x400x300
1-STBB6-M-BR-1200	1200	600	850	100	400x400x300
1-STBB6-M-BR-1300	1300	600	850	100	400x400x300
1-STBB6-M-BR-1400	1400	600	850	100	400x400x300
1-STBB6-M-BR-1500	1500	600	850	100	400x400x300

700MM DEPTH

CODE	L	D	H	BS	SINK DIM.
1-STBB7-M-BR-1100	1100	700	850	100	500x500x300
1-STBB7-M-BR-1200	1200	700	850	100	500x500x300
1-STBB7-M-BR-1300	1300	700	850	100	500x500x300
1-STBB7-M-BR-1400	1400	700	850	100	500x500x300
1-STBB7-M-BR-1500	1500	700	850	100	500x500x300



## PREPARATION SINK TABLE SQUARE EDGE WITH 2 SINKS (MIDDLE)

600MM DEPTH

CODE	L	D	H	BS	SINK DIM.
2-STBB6-M-BR-1600*	1600	600	850	100	400x400x300 (QTY 2)
2-STBB6-M-BR-1700*	1700	600	850	100	400x400x300 (QTY 2)
2-STBB6-M-BR-1800*	1800	600	850	100	400x400x300 (QTY 2)
2-STBB6-M-BR-1900*	1900	600	850	100	400x400x300 (QTY 2)
2-STBB6-M-BR-2000*	2000	600	850	100	400x400x300 (QTY 2)

700MM DEPTH

CODE	L	D	H	BS	SINK DIM.
2-STBB7-M-BR-1600*	1600	700	850	100	500x500x300 (QTY 2)
2-STBB7-M-BR-1700*	1700	700	850	100	500x500x300 (QTY 2)
2-STBB7-M-BR-1800*	1800	700	850	100	500x500x300 (QTY 2)
2-STBB7-M-BR-1900*	1900	700	850	100	500x500x300 (QTY 2)
2-STBB7-M-BR-2000*	2000	700	850	100	500x500x300 (QTY 2)



## PREPARATION SINK TABLE SQUARE EDGE WITH 3 SINKS (MIDDLE)

600MM DEPTH

CODE	L	D	H	BS	SINK DIM.
3-STBB6-M-BR-2100*	2100	600	850	100	500x500x300 (QTY 3)

700MM DEPTH

CODE	L	D	H	BS	SINK DIM.
3-STBB7-M-BR-2100*	2100	700	850	100	500x500x300 (QTY 3)

\*ON 6 LEGS



## PREPARATION SINK TABLE SQUARE EDGE WITH 1 SINK (RIGHT)

600MM DEPTH

CODE	L	D	H	BS	SINK DIM.
1-STBB6-R-BR-1100	1100	600	850	100	400x400x300
1-STBB6-R-BR-1200	1200	600	850	100	400x400x300
1-STBB6-R-BR-1300	1300	600	850	100	400x400x300
1-STBB6-R-BR-1400	1400	600	850	100	400x400x300
1-STBB6-R-BR-1500	1500	600	850	100	400x400x300

700MM DEPTH

CODE	L	D	H	BS	SINK DIM.
1-STBB7-R-BR-1100	1100	700	850	100	500x500x300
1-STBB7-R-BR-1200	1200	700	850	100	500x500x300
1-STBB7-R-BR-1300	1300	700	850	100	500x500x300
1-STBB7-R-BR-1400	1400	700	850	100	500x500x300
1-STBB7-R-BR-1500	1500	700	850	100	500x500x300



## PREPARATION SINK TABLE SQUARE EDGE WITH 2 SINKS (RIGHT)

600MM DEPTH

CODE	L	D	H	BS	SINK DIM.
2-STBB6-R-BR-1600*	1600	600	850	100	400x400x300 (QTY 2)
2-STBB6-R-BR-1700*	1700	600	850	100	400x400x300 (QTY 2)
2-STBB6-R-BR-1800*	1800	600	850	100	400x400x300 (QTY 2)
2-STBB6-R-BR-1900*	1900	600	850	100	400x400x300 (QTY 2)
2-STBB6-R-BR-2000*	2000	600	850	100	400x400x300 (QTY 2)

700MM DEPTH

CODE	L	D	H	BS	SINK DIM.
2-STBB7-R-BR-1600*	1600	700	850	100	500x500x300 (QTY 2)
2-STBB7-R-BR-1700*	1700	700	850	100	500x500x300 (QTY 2)
2-STBB7-R-BR-1800*	1800	700	850	100	500x500x300 (QTY 2)
2-STBB7-R-BR-1900*	1900	700	850	100	500x500x300 (QTY 2)
2-STBB7-R-BR-2000*	2000	700	850	100	500x500x300 (QTY 2)



## PREPARATION SINK TABLE SQUARE EDGE WITH 3 SINKS (RIGHT)

600MM DEPTH

CODE	L	D	H	BS	SINK DIM.
3-STBB6-R-BR-2100*	2100	600	850	100	500x500x300 (QTY 3)

700MM DEPTH

CODE	L	D	H	BS	SINK DIM.
3-STBB7-R-BR-2100*	2100	700	850	100	500x500x300 (QTY 3)

\*ON 6 LEGS



**PREPARATION SINK TABLE  
SQUARE EDGE WITH 1  
SINK (LEFT)**

600MM DEPTH

CODE	L	D	H	BS	SINK DIM.
1-STBB6-L-BR-1100	1100	600	850	100	400x400x300
1-STBB6-L-BR-1200	1200	600	850	100	400x400x300
1-STBB6-L-BR-1300	1300	600	850	100	400x400x300
1-STBB6-L-BR-1400	1400	600	850	100	400x400x300
1-STBB6-L-BR-1500	1500	600	850	100	400x400x300

700MM DEPTH

CODE	L	D	H	BS	SINK DIM.
1-STBB7-L-BR-1100	1100	700	850	100	500x500x300
1-STBB7-L-BR-1200	1200	700	850	100	500x500x300
1-STBB7-L-BR-1300	1300	700	850	100	500x500x300
1-STBB7-L-BR-1400	1400	700	850	100	500x500x300
1-STBB7-L-BR-1500	1500	700	850	100	500x500x300



**PREPARATION SINK TABLE  
SQUARE EDGE WITH 2  
SINKS (LEFT)**

600MM DEPTH

CODE	L	D	H	BS	SINK DIM.
2-STBB6-L-BR-1600*	1600	600	850	100	400x400x300 (QTY 2)
2-STBB6-L-BR-1700*	1700	600	850	100	400x400x300 (QTY 2)
2-STBB6-L-BR-1800*	1800	600	850	100	400x400x300 (QTY 2)
2-STBB6-L-BR-1900*	1900	600	850	100	400x400x300 (QTY 2)
2-STBB6-L-BR-2000*	2000	600	850	100	400x400x300 (QTY 2)

700MM DEPTH

CODE	L	D	H	BS	SINK DIM.
2-STBB7-L-BR-1600*	1600	700	850	100	500x500x300 (QTY 2)
2-STBB7-L-BR-1700*	1700	700	850	100	500x500x300 (QTY 2)
2-STBB7-L-BR-1800*	1800	700	850	100	500x500x300 (QTY 2)
2-STBB7-L-BR-1900*	1900	700	850	100	500x500x300 (QTY 2)
2-STBB7-L-BR-2000*	2000	700	850	100	500x500x300 (QTY 2)



**PREPARATION SINK TABLE  
SQUARE EDGE WITH 3  
SINKS (LEFT)**

600MM DEPTH

CODE	L	D	H	BS	SINK DIM.
3-STBB6-L-BR-2100*	2100	600	850	100	500x500x300 (QTY 3)

700MM DEPTH

CODE	L	D	H	BS	SINK DIM.
3-STBB7-L-BR-2100*	2100	700	850	100	500x500x300 (QTY 3)

\*ON 6 LEGS



**PREPARATION SINK  
TABLE INVERTED V  
EDGE WITH 1 SINK  
(ISLAND TYPE)**

600MM DEPTH

CODE	L	D	H	BS	SINK DIM.
1-STBBV6-IT-BR-600	600	600	850	-	400x400x300
1-STBBV6-IT-BR-700	700	600	850	-	400x400x300
1-STBBV6-IT-BR-800	800	600	850	-	400x400x300
1-STBBV6-IT-BR-900	900	600	850	-	400x400x300
1-STBBV6-IT-BR-1000	1000	600	850	-	400x400x300
1-STBBV6-IT-BR-1100	1100	600	850	-	400x400x300
1-STBBV6-IT-BR-1200	1200	600	850	-	400x400x300
1-STBBV6-IT-BR-1300	1300	600	850	-	400x400x300
1-STBBV6-IT-BR-1400	1400	600	850	-	400x400x300
1-STBBV6-IT-BR-1500	1500	600	850	-	400x400x300

700MM DEPTH

CODE	L	D	H	BS	SINK DIM.
1-STBBV7-IT-BR-600	600	700	850	-	500x500x300
1-STBBV7-IT-BR-700	700	700	850	-	500x500x300
1-STBBV7-IT-BR-800	800	700	850	-	500x500x300
1-STBBV7-IT-BR-900	900	700	850	-	500x500x300
1-STBBV7-IT-BR-1000	1000	700	850	-	500x500x300
1-STBBV7-IT-BR-1100	1100	700	850	-	500x500x300
1-STBBV7-IT-BR-1200	1200	700	850	-	500x500x300
1-STBBV7-IT-BR-1300	1300	700	850	-	500x500x300
1-STBBV7-IT-BR-1400	1400	700	850	-	500x500x300
1-STBBV7-IT-BR-1500	1500	700	850	-	500x500x300

800MM DEPTH

CODE	L	D	H	BS	SINK DIM.
1-STBBV8-IT-BR-600	600	800	850	-	500x500x300
1-STBBV8-IT-BR-700	700	800	850	-	500x500x300
1-STBBV8-IT-BR-800	800	800	850	-	500x500x300
1-STBBV8-IT-BR-900	900	800	850	-	500x500x300
1-STBBV8-IT-BR-1000	1000	800	850	-	500x500x300
1-STBBV8-IT-BR-1100	1100	800	850	-	500x500x300
1-STBBV8-IT-BR-1200	1200	800	850	-	500x500x300
1-STBBV8-IT-BR-1300	1300	800	850	-	500x500x300
1-STBBV8-IT-BR-1400	1400	800	850	-	500x500x300
1-STBBV8-IT-BR-1500	1500	800	850	-	500x500x300

900MM DEPTH

CODE	L	D	H	BS	SINK DIM.
1-STBBV9-IT-BR-600	600	900	850	-	500x500x300
1-STBBV9-IT-BR-700	700	900	850	-	500x500x300
1-STBBV9-IT-BR-800	800	900	850	-	500x500x300
1-STBBV9-IT-BR-900	900	900	850	-	500x500x300
1-STBBV9-IT-BR-1000	1000	900	850	-	500x500x300
1-STBBV9-IT-BR-1100	1100	900	850	-	500x500x300
1-STBBV9-IT-BR-1200	1200	900	850	-	500x500x300
1-STBBV9-IT-BR-1300	1300	900	850	-	500x500x300
1-STBBV9-IT-BR-1400	1400	900	850	-	500x500x300
1-STBBV9-IT-BR-1500	1500	900	850	-	500x500x300

## PREPARATION SINK TABLE INVERTED V EDGE WITH 1 SINK (ISLAND TYPE) AND MID AND BOTTOM SHELVES



### 600MM DEPTH

CODE	L	D	H	BS	SINK DIM.
1-STBBV6-IT-MBS-1500	1500	600	850	-	400x400x300
1-STBBV6-IT-MBS-1600*	1600	600	850	-	400x400x300
1-STBBV6-IT-MBS-1700*	1700	600	850	-	400x400x300
1-STBBV6-IT-MBS-1800*	1800	600	850	-	400x400x300
1-STBBV6-IT-MBS-1900*	1900	600	850	-	400x400x300
1-STBBV6-IT-MBS-2000*	2000	600	850	-	400x400x300
1-STBBV6-IT-MBS-2100*	2100	600	850	-	400x400x300
1-STBBV6-IT-MBS-2200*	2200	600	850	-	400x400x300
1-STBBV6-IT-MBS-2300*	2300	600	850	-	400x400x300
1-STBBV6-IT-MBS-2400*	2400	600	850	-	400x400x300

### 700MM DEPTH

CODE	L	D	H	BS	SINK DIM.
1-STBBV7-IT-MBS-1500	1500	700	850	-	500x500x300
1-STBBV7-IT-MBS-1600*	1600	700	850	-	500x500x300
1-STBBV7-IT-MBS-1700*	1700	700	850	-	500x500x300
1-STBBV7-IT-MBS-1800*	1800	700	850	-	500x500x300
1-STBBV7-IT-MBS-1900*	1900	700	850	-	500x500x300
1-STBBV7-IT-MBS-2000*	2000	700	850	-	500x500x300
1-STBBV7-IT-MBS-2100*	2100	700	850	-	500x500x300
1-STBBV7-IT-MBS-2200*	2200	700	850	-	500x500x300
1-STBBV7-IT-MBS-2300*	2300	700	850	-	500x500x300
1-STBBV7-IT-MBS-2400*	2400	700	850	-	500x500x300

### 800MM DEPTH

CODE	L	D	H	BS	SINK DIM.
1-STBBV8-IT-MBS-1500	1500	800	850	-	500x500x300
1-STBBV8-IT-MBS-1600*	1600	800	850	-	500x500x300
1-STBBV8-IT-MBS-1700*	1700	800	850	-	500x500x300
1-STBBV8-IT-MBS-1800*	1800	800	850	-	500x500x300
1-STBBV8-IT-MBS-1900*	1900	800	850	-	500x500x300
1-STBBV8-IT-MBS-2000*	2000	800	850	-	500x500x300
1-STBBV8-IT-MBS-2100*	2100	800	850	-	500x500x300
1-STBBV8-IT-MBS-2200*	2200	800	850	-	500x500x300
1-STBBV8-IT-MBS-2300*	2300	800	850	-	500x500x300
1-STBBV8-IT-MBS-2400*	2400	800	850	-	500x500x300

### 900MM DEPTH

CODE	L	D	H	BS	SINK DIM.
1-STBBV9-IT-MBS-1500	1500	900	850	-	500x500x300
1-STBBV9-IT-MBS-1600*	1600	900	850	-	500x500x300
1-STBBV9-IT-MBS-1700*	1700	900	850	-	500x500x300
1-STBBV9-IT-MBS-1800*	1800	900	850	-	500x500x300
1-STBBV9-IT-MBS-1900*	1900	900	850	-	500x500x300
1-STBBV9-IT-MBS-2000*	2000	900	850	-	500x500x300
1-STBBV9-IT-MBS-2100*	2100	900	850	-	500x500x300
1-STBBV9-IT-MBS-2200*	2200	900	850	-	500x500x300
1-STBBV9-IT-MBS-2300*	2300	900	850	-	500x500x300
1-STBBV9-IT-MBS-2400*	2400	900	850	-	500x500x300



## PREPARATION SINK TABLE INVERTED V EDGE WITH 1 SINK (ISLAND TYPE)

### 600MM DEPTH

CODE	L	D	H	BS	SINK DIM.
1-STBBV6-IT-BR-1600*	1600	600	850	-	400x400x300
1-STBBV6-IT-BR-1700*	1700	600	850	-	400x400x300
1-STBBV6-IT-BR-1800*	1800	600	850	-	400x400x300
1-STBBV6-IT-BR-1900*	1900	600	850	-	400x400x300
1-STBBV6-IT-BR-2000*	2000	600	850	-	400x400x300
1-STBBV6-IT-BR-2100*	2100	600	850	-	400x400x300

### 700MM DEPTH

CODE	L	D	H	BS	SINK DIM.
1-STBBV7-IT-BR-1600*	1600	700	850	-	500x500x300
1-STBBV7-IT-BR-1700*	1700	700	850	-	500x500x300
1-STBBV7-IT-BR-1800*	1800	700	850	-	500x500x300
1-STBBV7-IT-BR-1900*	1900	700	850	-	500x500x300
1-STBBV7-IT-BR-2000*	2000	700	850	-	500x500x300
1-STBBV7-IT-BR-2100*	2100	700	850	-	500x500x300

### 800MM DEPTH

CODE	L	D	H	BS	SINK DIM.
1-STBBV8-IT-BR-1600*	1600	800	850	-	500x500x300
1-STBBV8-IT-BR-1700*	1700	800	850	-	500x500x300
1-STBBV8-IT-BR-1800*	1800	800	850	-	500x500x300
1-STBBV8-IT-BR-1900*	1900	800	850	-	500x500x300
1-STBBV8-IT-BR-2000*	2000	800	850	-	500x500x300
1-STBBV8-IT-BR-2100*	2100	800	850	-	500x500x300

### 800MM DEPTH

CODE	L	D	H	BS	SINK DIM.
1-STBBV9-IT-BR-1600*	1600	900	850	-	500x500x300
1-STBBV9-IT-BR-1700*	1700	900	850	-	500x500x300
1-STBBV9-IT-BR-1800*	1800	900	850	-	500x500x300
1-STBBV9-IT-BR-1900*	1900	900	850	-	500x500x300
1-STBBV9-IT-BR-2000*	2000	900	850	-	500x500x300
1-STBBV9-IT-BR-2100*	2100	900	850	-	500x500x300

\*ON 6 LEGS



**PREPARATION SINK TABLE  
INVERTED V EDGE WITH 1 SINK  
(LEFT)**

**600MM DEPTH**

CODE	L	D	H	BS	SINK DIM.
1-STBBV6-L-BR-600	600	600	850	100	400x400x300
1-STBBV6-L-BR-700	700	600	850	100	400x400x300
1-STBBV6-L-BR-800	800	600	850	100	400x400x300
1-STBBV6-L-BR-900	900	600	850	100	400x400x300
1-STBBV6-L-BR-1000	1000	600	850	100	400x400x300
1-STBBV6-L-BR-1100	1100	600	850	100	400x400x300
1-STBBV6-L-BR-1200	1200	600	850	100	400x400x300
1-STBBV6-L-BR-1300	1300	600	850	100	400x400x300
1-STBBV6-L-BR-1400	1400	600	850	100	400x400x300
1-STBBV6-L-BR-1500	1500	600	850	100	400x400x300
1-STBBV6-L-BR-1600*	1600	600	850	100	400x400x300
1-STBBV6-L-BR-1700*	1700	600	850	100	400x400x300
1-STBBV6-L-BR-1800*	1800	600	850	100	400x400x300
1-STBBV6-L-BR-1900*	1900	600	850	100	400x400x300
1-STBBV6-L-BR-2000*	2000	600	850	100	400x400x300
1-STBBV6-L-BR-2100*	2100	600	850	100	400x400x300

**700MM DEPTH**

CODE	L	D	H	BS	SINK DIM.
1-STBBV7-L-BR-600	600	700	850	100	500x500x300
1-STBBV7-L-BR-700	700	700	850	100	500x500x300
1-STBBV7-L-BR-800	800	700	850	100	500x500x300
1-STBBV7-L-BR-900	900	700	850	100	500x500x300
1-STBBV7-L-BR-1000	1000	700	850	100	500x500x300
1-STBBV7-L-BR-1100	1100	700	850	100	500x500x300
1-STBBV7-L-BR-1200	1200	700	850	100	500x500x300
1-STBBV7-L-BR-1300	1300	700	850	100	500x500x300
1-STBBV7-L-BR-1400	1400	700	850	100	500x500x300
1-STBBV7-L-BR-1500	1500	700	850	100	500x500x300
1-STBBV7-L-BR-1600*	1600	700	850	100	500x500x300
1-STBBV7-L-BR-1700*	1700	700	850	100	500x500x300
1-STBBV7-L-BR-1800*	1800	700	850	100	500x500x300
1-STBBV7-L-BR-1900*	1900	700	850	100	500x500x300
1-STBBV7-L-BR-2000*	2000	700	850	100	500x500x300
1-STBBV7-L-BR-2100*	2100	700	850	100	500x500x300

**800MM DEPTH**

CODE	L	D	H	BS	SINK DIM.
1-STBBV8-L-BR-600	600	800	850	100	500x500x300
1-STBBV8-L-BR-700	700	800	850	100	500x500x300
1-STBBV8-L-BR-800	800	800	850	100	500x500x300
1-STBBV8-L-BR-900	900	800	850	100	500x500x300
1-STBBV8-L-BR-1000	1000	800	850	100	500x500x300
1-STBBV8-L-BR-1100	1100	800	850	100	500x500x300
1-STBBV8-L-BR-1200	1200	800	850	100	500x500x300
1-STBBV8-L-BR-1300	1300	800	850	100	500x500x300
1-STBBV8-L-BR-1400	1400	800	850	100	500x500x300
1-STBBV8-L-BR-1500	1500	800	850	100	500x500x300
1-STBBV8-L-BR-1600*	1600	800	850	100	500x500x300
1-STBBV8-L-BR-1700*	1700	800	850	100	500x500x300
1-STBBV8-L-BR-1800*	1800	800	850	100	500x500x300
1-STBBV8-L-BR-1900*	1900	800	850	100	500x500x300
1-STBBV8-L-BR-2000*	2000	800	850	100	500x500x300
1-STBBV8-L-BR-2100*	2100	800	850	100	500x500x300

**900MM DEPTH**

CODE	L	D	H	BS	SINK DIM.
1-STBBV9-L-BR-600	600	900	850	100	500x500x300
1-STBBV9-L-BR-700	700	900	850	100	500x500x300
1-STBBV9-L-BR-800	800	900	850	100	500x500x300
1-STBBV9-L-BR-900	900	900	850	100	500x500x300
1-STBBV9-L-BR-1000	1000	900	850	100	500x500x300
1-STBBV9-L-BR-1100	1100	900	850	100	500x500x300
1-STBBV9-L-BR-1200	1200	900	850	100	500x500x300
1-STBBV9-L-BR-1300	1300	900	850	100	500x500x300
1-STBBV9-L-BR-1400	1400	900	850	100	500x500x300
1-STBBV9-L-BR-1500	1500	900	850	100	500x500x300
1-STBBV9-L-BR-1600*	1600	900	850	100	500x500x300
1-STBBV9-L-BR-1700*	1700	900	850	100	500x500x300
1-STBBV9-L-BR-1800*	1800	900	850	100	500x500x300
1-STBBV9-L-BR-1900*	1900	900	850	100	500x500x300
1-STBBV9-L-BR-2000*	2000	900	850	100	500x500x300
1-STBBV9-L-BR-2100*	2100	900	850	100	500x500x300

\*ON 6 LEGS



**PREPARATION SINK  
TABLE INVERTED V EDGE  
WITH 1 SINK (LEFT) AND  
BOTTOM SHELF**

### 600MM DEPTH

CODE	L	D	H	BS	SINK DIM.
1-STBBV6-L-BS-1500	1500	600	850	100	400x400x300
1-STBBV6-L-BS-1600*	1600	600	850	100	400x400x300
1-STBBV6-L-BS-1700*	1700	600	850	100	400x400x300
1-STBBV6-L-BS-1800*	1800	600	850	100	400x400x300
1-STBBV6-L-BS-1900*	1900	600	850	100	400x400x300
1-STBBV6-L-BS-2000*	2000	600	850	100	400x400x300
1-STBBV6-L-BS-2100*	2100	600	850	100	400x400x300

### 700MM DEPTH

CODE	L	D	H	BS	SINK DIM.
1-STBBV7-L-BS-1500	1500	700	850	100	500x500x300
1-STBBV7-L-BS-1600*	1600	700	850	100	500x500x300
1-STBBV7-L-BS-1700*	1700	700	850	100	500x500x300
1-STBBV7-L-BS-1800*	1800	700	850	100	500x500x300
1-STBBV7-L-BS-1900*	1900	700	850	100	500x500x300
1-STBBV7-L-BS-2000*	2000	700	850	100	500x500x300
1-STBBV7-L-BS-2100*	2100	700	850	100	500x500x300

### 800MM DEPTH

CODE	L	D	H	BS	SINK DIM.
1-STBBV8-L-BS-1500	1500	800	850	100	500x500x300
1-STBBV8-L-BS-1600*	1600	800	850	100	500x500x300
1-STBBV8-L-BS-1700*	1700	800	850	100	500x500x300
1-STBBV8-L-BS-1800*	1800	800	850	100	500x500x300
1-STBBV8-L-BS-1900*	1900	800	850	100	500x500x300
1-STBBV8-L-BS-2000*	2000	800	850	100	500x500x300
1-STBBV8-L-BS-2100*	2100	800	850	100	500x500x300

### 900MM DEPTH

CODE	L	D	H	BS	SINK DIM.
1-STBBV9-L-BS-1500	1500	900	850	100	500x500x300
1-STBBV9-L-BS-1600*	1600	900	850	100	500x500x300
1-STBBV9-L-BS-1700*	1700	900	850	100	500x500x300
1-STBBV9-L-BS-1800*	1800	900	850	100	500x500x300
1-STBBV9-L-BS-1900*	1900	900	850	100	500x500x300
1-STBBV9-L-BS-2000*	2000	900	850	100	500x500x300
1-STBBV9-L-BS-2100*	2100	900	850	100	500x500x300

\*ON 6 LEGS



**PREPARATION SINK  
TABLE INVERTED V EDGE  
WITH 1 SINK (LEFT) AND  
MID AND BOTTOM SHELF**

### 600MM DEPTH

CODE	L	D	H	BS	SINK DIM.
1-STBBV6-L-MBS-1500	1500	600	850	100	400x400x300
1-STBBV6-L-MBS-1600*	1600	600	850	100	400x400x300
1-STBBV6-L-MBS-1700*	1700	600	850	100	400x400x300
1-STBBV6-L-MBS-1800*	1800	600	850	100	400x400x300
1-STBBV6-L-MBS-1900*	1900	600	850	100	400x400x300
1-STBBV6-L-MBS-2000*	2000	600	850	100	400x400x300
1-STBBV6-L-MBS-2100*	2100	600	850	100	400x400x300

### 700MM DEPTH

CODE	L	D	H	BS	SINK DIM.
1-STBBV7-L-MBS-1500	1500	700	850	100	500x500x300
1-STBBV7-L-MBS-1600*	1600	700	850	100	500x500x300
1-STBBV7-L-MBS-1700*	1700	700	850	100	500x500x300
1-STBBV7-L-MBS-1800*	1800	700	850	100	500x500x300
1-STBBV7-L-MBS-1900*	1900	700	850	100	500x500x300
1-STBBV7-L-MBS-2000*	2000	700	850	100	500x500x300
1-STBBV7-L-MBS-2100*	2100	700	850	100	500x500x300

### 800MM DEPTH

CODE	L	D	H	BS	SINK DIM.
1-STBBV8-L-MBS-1500	1500	800	850	100	500x500x300
1-STBBV8-L-MBS-1600*	1600	800	850	100	500x500x300
1-STBBV8-L-MBS-1700*	1700	800	850	100	500x500x300
1-STBBV8-L-MBS-1800*	1800	800	850	100	500x500x300
1-STBBV8-L-MBS-1900*	1900	800	850	100	500x500x300
1-STBBV8-L-MBS-2000*	2000	800	850	100	500x500x300
1-STBBV8-L-MBS-2100*	2100	800	850	100	500x500x300

### 900MM DEPTH

CODE	L	D	H	BS	SINK DIM.
1-STBBV9-L-MBS-1500	1500	900	850	100	500x500x300
1-STBBV9-L-MBS-1600*	1600	900	850	100	500x500x300
1-STBBV9-L-MBS-1700*	1700	900	850	100	500x500x300
1-STBBV9-L-MBS-1800*	1800	900	850	100	500x500x300
1-STBBV9-L-MBS-1900*	1900	900	850	100	500x500x300
1-STBBV9-L-MBS-2000*	2000	900	850	100	500x500x300
1-STBBV9-L-MBS-2100*	2100	900	850	100	500x500x300

\*ON 6 LEGS



**PREPARATION SINK TABLE  
INVERTED V EDGE WITH 1 SINK  
(RIGHT)**

**600MM DEPTH**

CODE	L	D	H	BS	SINK DIM.
1-STBBV6-R-BR-600	600	600	850	100	400x400x300
1-STBBV6-R-BR-700	700	600	850	100	400x400x300
1-STBBV6-R-BR-800	800	600	850	100	400x400x300
1-STBBV6-R-BR-900	900	600	850	100	400x400x300
1-STBBV6-R-BR-1000	1000	600	850	100	400x400x300
1-STBBV6-R-BR-1100	1100	600	850	100	400x400x300
1-STBBV6-R-BR-1200	1200	600	850	100	400x400x300
1-STBBV6-R-BR-1300	1300	600	850	100	400x400x300
1-STBBV6-R-BR-1400	1400	600	850	100	400x400x300
1-STBBV6-R-BR-1500	1500	600	850	100	400x400x300
1-STBBV6-R-BR-1600*	1600	600	850	100	400x400x300
1-STBBV6-R-BR-1700*	1700	600	850	100	400x400x300
1-STBBV6-R-BR-1800*	1800	600	850	100	400x400x300
1-STBBV6-R-BR-1900*	1900	600	850	100	400x400x300
1-STBBV6-R-BR-2000*	2000	600	850	100	400x400x300
1-STBBV6-R-BR-2100*	2100	600	850	100	400x400x300

**700MM DEPTH**

CODE	L	D	H	BS	SINK DIM.
1-STBBV7-R-BR-600	600	700	850	100	500x500x300
1-STBBV7-R-BR-700	700	700	850	100	500x500x300
1-STBBV7-R-BR-800	800	700	850	100	500x500x300
1-STBBV7-R-BR-900	900	700	850	100	500x500x300
1-STBBV7-R-BR-1000	1000	700	850	100	500x500x300
1-STBBV7-R-BR-1100	1100	700	850	100	500x500x300
1-STBBV7-R-BR-1200	1200	700	850	100	500x500x300
1-STBBV7-R-BR-1300	1300	700	850	100	500x500x300
1-STBBV7-R-BR-1400	1400	700	850	100	500x500x300
1-STBBV7-R-BR-1500	1500	700	850	100	500x500x300
1-STBBV7-R-BR-1600*	1600	700	850	100	500x500x300
1-STBBV7-R-BR-1700*	1700	700	850	100	500x500x300
1-STBBV7-R-BR-1800*	1800	700	850	100	500x500x300
1-STBBV7-R-BR-1900*	1900	700	850	100	500x500x300
1-STBBV7-R-BR-2000*	2000	700	850	100	500x500x300
1-STBBV7-R-BR-2100*	2100	700	850	100	500x500x300

**800MM DEPTH**

CODE	L	D	H	BS	SINK DIM.
1-STBBV8-R-BR-600	600	800	850	100	500x500x300
1-STBBV8-R-BR-700	700	800	850	100	500x500x300
1-STBBV8-R-BR-800	800	800	850	100	500x500x300
1-STBBV8-R-BR-900	900	800	850	100	500x500x300
1-STBBV8-R-BR-1000	1000	800	850	100	500x500x300
1-STBBV8-R-BR-1100	1100	800	850	100	500x500x300
1-STBBV8-R-BR-1200	1200	800	850	100	500x500x300
1-STBBV8-R-BR-1300	1300	800	850	100	500x500x300
1-STBBV8-R-BR-1400	1400	800	850	100	500x500x300
1-STBBV8-R-BR-1500	1500	800	850	100	500x500x300
1-STBBV8-R-BR-1600*	1600	800	850	100	500x500x300
1-STBBV8-R-BR-1700*	1700	800	850	100	500x500x300
1-STBBV8-R-BR-1800*	1800	800	850	100	500x500x300
1-STBBV8-R-BR-1900*	1900	800	850	100	500x500x300
1-STBBV8-R-BR-2000*	2000	800	850	100	500x500x300
1-STBBV8-R-BR-2100*	2100	800	850	100	500x500x300

**900MM DEPTH**

CODE	L	D	H	BS	SINK DIM.
1-STBBV9-R-BR-600	600	900	850	100	500x500x300
1-STBBV9-R-BR-700	700	900	850	100	500x500x300
1-STBBV9-R-BR-800	800	900	850	100	500x500x300
1-STBBV9-R-BR-900	900	900	850	100	500x500x300
1-STBBV9-R-BR-1000	1000	900	850	100	500x500x300
1-STBBV9-R-BR-1100	1100	900	850	100	500x500x300
1-STBBV9-R-BR-1200	1200	900	850	100	500x500x300
1-STBBV9-R-BR-1300	1300	900	850	100	500x500x300
1-STBBV9-R-BR-1400	1400	900	850	100	500x500x300
1-STBBV9-R-BR-1500	1500	900	850	100	500x500x300
1-STBBV9-R-BR-1600*	1600	900	850	100	500x500x300
1-STBBV9-R-BR-1700*	1700	900	850	100	500x500x300
1-STBBV9-R-BR-1800*	1800	900	850	100	500x500x300
1-STBBV9-R-BR-1900*	1900	900	850	100	500x500x300
1-STBBV9-R-BR-2000*	2000	900	850	100	500x500x300
1-STBBV9-R-BR-2100*	2100	900	850	100	500x500x300

\*ON 6 LEGS



**PREPARATION SINK  
TABLE INVERTED V EDGE  
WITH 1 SINK (RIGHT) AND  
BOTTOM SHELF**

### 600MM DEPTH

CODE	L	D	H	BS	SINK DIM.
1-STBBV6-R-BS-1500	1500	600	850	100	400x400x300
1-STBBV6-R-BS-1600*	1600	600	850	100	400x400x300
1-STBBV6-R-BS-1700*	1700	600	850	100	400x400x300
1-STBBV6-R-BS-1800*	1800	600	850	100	400x400x300
1-STBBV6-R-BS-1900*	1900	600	850	100	400x400x300
1-STBBV6-R-BS-2000*	2000	600	850	100	400x400x300
1-STBBV6-R-BS-2100*	2100	600	850	100	400x400x300

### 700MM DEPTH

CODE	L	D	H	BS	SINK DIM.
1-STBBV7-R-BS-1500	1500	700	850	100	500x500x300
1-STBBV7-R-BS-1600*	1600	700	850	100	500x500x300
1-STBBV7-R-BS-1700*	1700	700	850	100	500x500x300
1-STBBV7-R-BS-1800*	1800	700	850	100	500x500x300
1-STBBV7-R-BS-1900*	1900	700	850	100	500x500x300
1-STBBV7-R-BS-2000*	2000	700	850	100	500x500x300
1-STBBV7-R-BS-2100*	2100	700	850	100	500x500x300

### 800MM DEPTH

CODE	L	D	H	BS	SINK DIM.
1-STBBV8-R-BS-1500	1500	800	850	100	500x500x300
1-STBBV8-R-BS-1600*	1600	800	850	100	500x500x300
1-STBBV8-R-BS-1700*	1700	800	850	100	500x500x300
1-STBBV8-R-BS-1800*	1800	800	850	100	500x500x300
1-STBBV8-R-BS-1900*	1900	800	850	100	500x500x300
1-STBBV8-R-BS-2000*	2000	800	850	100	500x500x300
1-STBBV8-R-BS-2100*	2100	800	850	100	500x500x300

### 900MM DEPTH

CODE	L	D	H	BS	SINK DIM.
1-STBBV9-R-BS-1500	1500	900	850	100	500x500x300
1-STBBV9-R-BS-1600*	1600	900	850	100	500x500x300
1-STBBV9-R-BS-1700*	1700	900	850	100	500x500x300
1-STBBV9-R-BS-1800*	1800	900	850	100	500x500x300
1-STBBV9-R-BS-1900*	1900	900	850	100	500x500x300
1-STBBV9-R-BS-2000*	2000	900	850	100	500x500x300
1-STBBV9-R-BS-2100*	2100	900	850	100	500x500x300

\*ON 6 LEGS



**PREPARATION SINK  
TABLE INVERTED V EDGE  
WITH 1 SINK (RIGHT) AND  
MID AND BOTTOM SHELF**

### 600MM DEPTH

CODE	L	D	H	BS	SINK DIM.
1-STBBV6-R-MBS-1500	1500	600	850	100	400x400x300
1-STBBV6-R-MBS-1600*	1600	600	850	100	400x400x300
1-STBBV6-R-MBS-1700*	1700	600	850	100	400x400x300
1-STBBV6-R-MBS-1800*	1800	600	850	100	400x400x300
1-STBBV6-R-MBS-1900*	1900	600	850	100	400x400x300
1-STBBV6-R-MBS-2000*	2000	600	850	100	400x400x300
1-STBBV6-R-MBS-2100*	2100	600	850	100	400x400x300

### 700MM DEPTH

CODE	L	D	H	BS	SINK DIM.
1-STBBV7-R-MBS-1500	1500	700	850	100	500x500x300
1-STBBV7-R-MBS-1600*	1600	700	850	100	500x500x300
1-STBBV7-R-MBS-1700*	1700	700	850	100	500x500x300
1-STBBV7-R-MBS-1800*	1800	700	850	100	500x500x300
1-STBBV7-R-MBS-1900*	1900	700	850	100	500x500x300
1-STBBV7-R-MBS-2000*	2000	700	850	100	500x500x300
1-STBBV7-R-MBS-2100*	2100	700	850	100	500x500x300

### 800MM DEPTH

CODE	L	D	H	BS	SINK DIM.
1-STBBV8-R-MBS-1500	1500	800	850	100	500x500x300
1-STBBV8-R-MBS-1600*	1600	800	850	100	500x500x300
1-STBBV8-R-MBS-1700*	1700	800	850	100	500x500x300
1-STBBV8-R-MBS-1800*	1800	800	850	100	500x500x300
1-STBBV8-R-MBS-1900*	1900	800	850	100	500x500x300
1-STBBV8-R-MBS-2000*	2000	800	850	100	500x500x300
1-STBBV8-R-MBS-2100*	2100	800	850	100	500x500x300

### 900MM DEPTH

CODE	L	D	H	BS	SINK DIM.
1-STBBV9-R-MBS-1500	1500	900	850	100	500x500x300
1-STBBV9-R-MBS-1600*	1600	900	850	100	500x500x300
1-STBBV9-R-MBS-1700*	1700	900	850	100	500x500x300
1-STBBV9-R-MBS-1800*	1800	900	850	100	500x500x300
1-STBBV9-R-MBS-1900*	1900	900	850	100	500x500x300
1-STBBV9-R-MBS-2000*	2000	900	850	100	500x500x300
1-STBBV9-R-MBS-2100*	2100	900	850	100	500x500x300

\*ON 6 LEGS

# DISHWASHING TABLE 026



- Diecast stamped sink.
- Fully welded.
- 304 stainless steel.
- Rugged heavy duty design.
- 1.5 mm thick stainless steel top with hair line finish.
- Adjustable stainless steel footing.
- Faucets not included.





## DISHWASHING TABLE - 1 SINK

CODE	L	D	H	BS	SINK DIM.
1-SDTB75-1800-M*	1800	750	900	100	600X450X300
1-SDTB75-1900-M*	1900	750	900	100	600X450X300
1-SDTB75-2000-M*	2000	750	900	100	600X450X300
1-SDTB75-2100-M*	2100	750	900	100	600X450X300
1-SDTB75-2200-M*	2200	750	900	100	600X450X300
1-SDTB75-2300-M*	2300	750	900	100	600X450X300



## POTWASH TABLE - 1 SINK

CODE	L	D	H	BS	SINK DIM.
1-SPT70-1200	1200	750	900	100	600X500X300
1-SPT70-1300	1300	750	900	100	600X500X300
1-SPT70-1400	1400	750	900	100	600X500X300
1-SPT70-1500	1500	750	900	100	600X500X300
1-SPT70-1600*	1600	750	900	100	600X500X300
1-SPT70-1700*	1700	750	900	100	600X500X300



## DISHWASHING TABLE - 2 SINKS

CODE	L	D	H	BS	SINK DIM.
2-SDTB75-2400-M*	2400	750	900	100	600X450X300
2-SDTB75-2500-M*	2500	750	900	100	600X450X300
2-SDTB75-2600-M*	2600	750	900	100	600X450X300
2-SDTB75-2700-M*	2700	750	900	100	600X450X300
2-SDTB75-2800-M*	2800	750	900	100	600X450X300
2-SDTB75-2900-M*	2900	750	900	100	600X450X300



## POTWASH TABLE - 2 SINKS

CODE	L	D	H	BS	SINK DIM.
2-SPT70-1800*	1800	750	900	100	600X500X300
2-SPT70-1900*	1900	750	900	100	600X500X300
2-SPT70-2000*	2000	750	900	100	600X500X300
2-SPT70-2100*	2100	750	900	100	600X500X300
2-SPT70-2200*	2200	750	900	100	600X500X300
2-SPT70-2300*	2300	750	900	100	600X500X300



## DISHWASHING TABLE - 3 SINKS

CODE	L	D	H	BS	SINK DIM.
3-SDTB75-3000-M*	3000	750	900	100	600X450X300
3-SDTB75-3100-M*	3100	750	900	100	600X450X300
3-SDTB75-3200-M**	3200	750	900	100	600X450X300
3-SDTB75-3300-M**	3300	750	900	100	600X450X300
3-SDTB75-3400-M**	3400	750	900	100	600X450X300
3-SDTB75-3500-M**	3500	750	900	100	600X450X300
3-SDTB75-3600-M**	3600	750	900	100	600X450X300
3-SDTB75-3700-M**	3700	750	900	100	600X450X300
3-SDTB75-3800-M**	3800	750	900	100	600X450X300
3-SDTB75-3900-M**	3900	750	900	100	600X450X300
3-SDTB75-4000-M**	4000	750	900	100	600X450X300



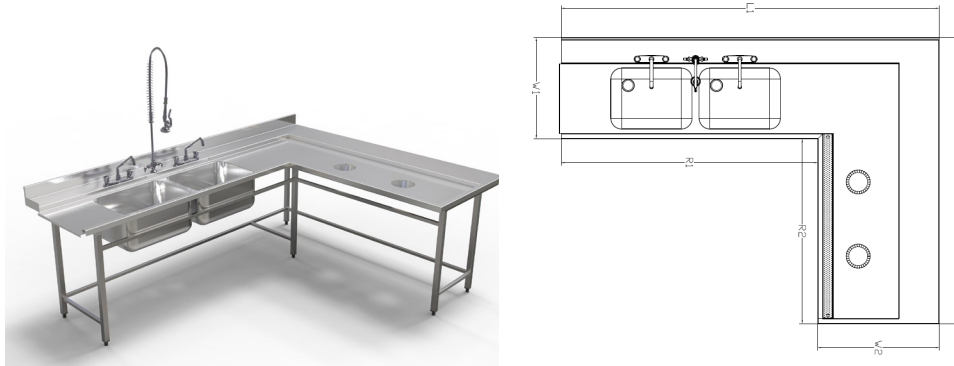
## POTWASH TABLE - 3 SINKS

CODE	L	D	H	BS	SINK DIM.
3-SPT70-2400*	2400	750	900	100	600X500X300
3-SPT70-2500*	2500	750	900	100	600X500X300
3-SPT70-2600*	2600	750	900	100	600X500X300
3-SPT70-2700*	2700	750	900	100	600X500X300
3-SPT70-2800*	2800	750	900	100	600X500X300
3-SPT70-2900*	2900	750	900	100	600X500X300
3-SPT70-3000*	3000	750	900	100	600X500X300

\*ON 6 LEGS  
\*\*ON 8 LEGS

\*ON 6 LEGS  
\*\*ON 8 LEGS

## DOUBLE SINK DISHWASHING TABLE WITH WASTE CHUTE - 750MM DEPTH WITH BACKSPLASH



### RIGHT WASTE CHUTE

CODE	L1	L2	H	R1	R2	W1	W2	BS	SINK DIM.
2-SDTB-WC-2800-2100-R	2800	2100	900	1950	1350	750	850	100	600x450x300 (QTY 2)

### LEFT WASTE CHUTE

CODE	L1	L2	H	R1	R2	W1	W2	BS	SINK DIM.
2-SDTB-WC-2800-2100-L	2800	2100	900	1950	1350	750	850	100	600x450x300 (QTY 2)

## RIGHT STRAIGHT LANDING TABLE - 750MM DEPTH WITH BACKSPLASH



CODE	L	D	H	BS	SINK DIM.
SLTB75-600-R-F	600	750	900	100	-
SLTB75-1100-R-F	1100	750	900	100	-
SLTB75-1600-R-F*	1600	750	900	100	-

\*ON 6 LEGS

## LEFT STRAIGHT LANDING TABLE - 750MM DEPTH WITH BACKSPLASH



CODE	L	D	H	BS	SINK DIM.
SLTB75-600-L-F	600	750	900	100	-
SLTB75-1100-L-F	1100	750	900	100	-
SLTB75-1600-L-F*	1600	750	900	100	-

\*ON 6 LEGS

## RIGHT STRAIGHT LANDING TABLE WITH GRAVITY ROLLER - 750MM DEPTH WITH BACKSPLASH



CODE	L	D	H	BS	SINK DIM.
SLTB75-600-R	600	750	900	100	-
SLTB75-1100-R	1100	750	900	100	-
SLTB75-1600-R*	1600	750	900	100	-

\*ON 6 LEGS

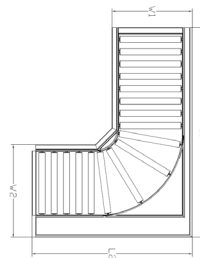
## LEFT STRAIGHT LANDING TABLE WITH GRAVITY ROLLER - 750MM DEPTH WITH BACKSPLASH



CODE	L	D	H	BS	SINK DIM.
SLTB75-600-L	600	750	900	100	-
SLTB75-1100-L	1100	750	900	100	-
SLTB75-1600-L*	1600	750	900	100	-

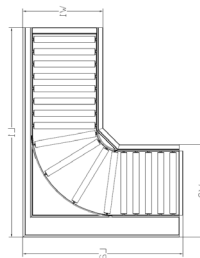
\*ON 6 LEGS

## RIGHT L-SHAPED LANDING TABLE WITH GRAVITY ROLLER - 750MM DEPTH WITH BACKSPLASH



CODE	L1	L2	H	R1	R2	W1	W2	BS	SINK DIM.
L-SLTB7-1700-1300-R	1700	1300	900	800	550	750	900	100	-

## LEFT L-SHAPED LANDING TABLE WITH GRAVITY ROLLER - 750MM DEPTH WITH BACKSPLASH



CODE	L1	L2	H	R1	R2	W1	W2	BS	SINK DIM.
L-SLTB7-1700-1300-L	1700	1300	900	800	550	750	900	100	-

# STILL HANDWASHING YOUR DIRTY DISHES?



## TIME FOR AN UPGRADE.



### MEIKO UPSTER H 500 INDUSTRIAL DISHWASHER

Dishwashing has never been easier. Consistent power combined with warewashing convenience at a reasonable price. No steam discharge when you open the machine, plus convenient automatic start-up. A great choice for tall washware, too, such as large plates, serving dishes and trays. High temp ensures safety and decreases amount of detergent used, which lowers your operating expenses.

- Made in Germany
- Only 3L of water used per basket
- 3 programmable times (90/120/240 secs)
- 500 x 500 mm racks
- 15 - 40 baskets per hour
- 8.4 kW

# SINK 038



- Diecast stamped sink.
- Fully welded.
- 304 stainless steel.
- Rugged heavy duty design.
- Specialized knee pedal.

## WALL MOUNTED KNEE TYPE HANDWASH SINK



CODE	L	D	H	BS
WMHS-KN	500	450	300	100

## FLOOR MOUNTED PEDAL TYPE HANDWASH SINK



CODE	L	D	H	BS
SAHS-PD	500	450	850	100

## FLOOR MOUNTED PEDAL TYPE HANDWASH SINK WITH SOAP DISPENSER



CODE	L	D	H	BS
SAHS-SD-PS	438	387	863	546

## SOAK SINK WITH CASTERS



CODE	L	D	H	BS
SKS-STR	600	600	750	-

## MOP SINK



CODE	L	D	H	BS
MPS-BS	600	600	600	-

# MAKE WORLD CLASS GELATO





# WITH EASE.



## CATTABRIGA COMPACTA VARIO 4

Compacta Vario is a two-in-one unit composed of two different cylinders: the upper cylinder pasteurizes ingredients, while the lower cylinder freezes the mix, producing gelato with excellent consistency. It is an all-in-one equipment, covering the majority of the production process of artisanal gelato.

- Made in Italy
- 4 kg per cycle
- Air-cooled
- 220V / 60Hz / 1 Phase

042

# UPRIGHT CABINET



- Fully welded body.
- 304 stainless steel.
- Stainless steel handles that minimize wear and tear.
- Rugged heavy duty design.
- Adjustable stainless steel footing.

## UPRIGHT CABINET WITH TWO SWING DOORS - 600MM DEPTH



CODE	L	D	H
UPRC6-SWD-800	800	600	1800
UPRC6-SWD-900	900	600	1800
UPRC6-SWD-1000	1000	600	1800
UPRC6-SWD-1100	1100	600	1800
UPRC6-SWD-1200	1200	600	1800
UPRC6-SWD-1300	1300	600	1800
UPRC6-SWD-1400	1400	600	1800
UPRC6-SWD-1500	1500	600	1800
UPRC6-SWD-1600*	1600	600	1800
UPRC6-SWD-1700*	1700	600	1800
UPRC6-SWD-1800*	1800	600	1800

\*ON 6 LEGS

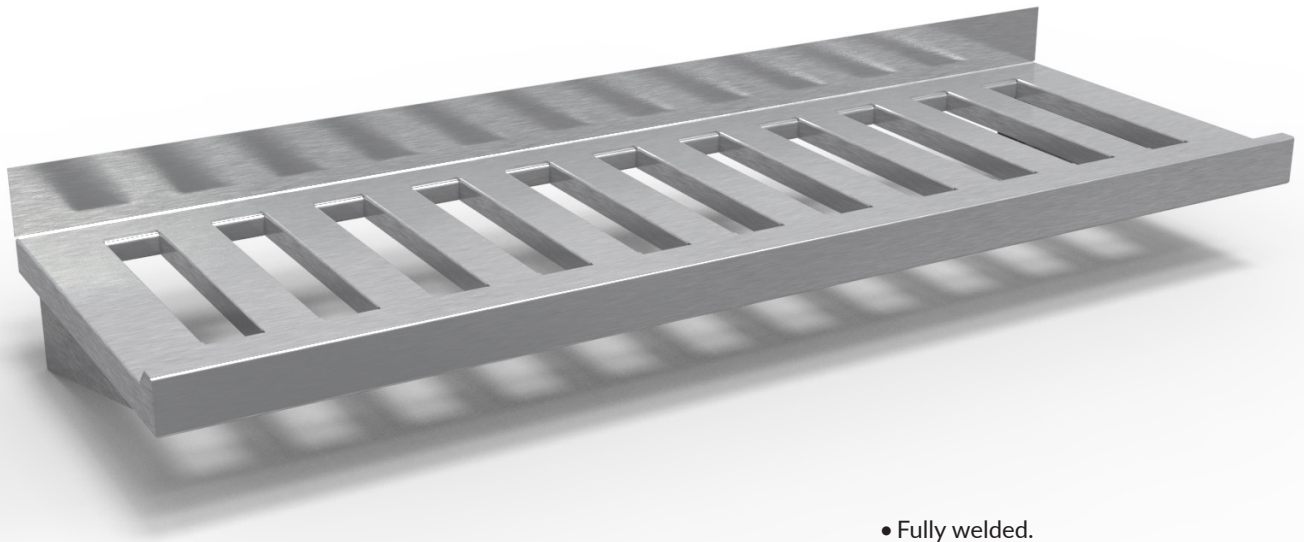
## UPRIGHT CABINET WITH TWO SLIDING DOORS - 600MM DEPTH



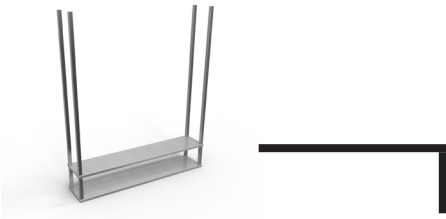
CODE	L	D	H
UPRC6-SLD-1000	1000	600	1800
UPRC6-SLD-1100	1100	600	1800
UPRC6-SLD-1200	1200	600	1800
UPRC6-SLD-1300	1300	600	1800
UPRC6-SLD-1400	1400	600	1800
UPRC6-SLD-1500	1500	600	1800
UPRC6-SLD-1600*	1600	600	1800
UPRC6-SLD-1700*	1700	600	1800
UPRC6-SLD-1800*	1800	600	1800

\*ON 6 LEGS

# SHELVING <sub>044</sub>



- Fully welded.
- 304 stainless steel.
- Rugged heavy duty design.
- Inclusive of wall fasteners.



## CEILING MOUNTED TWO LAYERED SHELF

300MM DEPTH

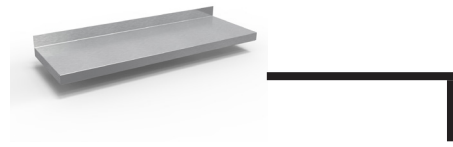
CODE	L	D	H	BS
2-CMS-ST-6W-500	500	300	2000	-
2-CMS-ST-6W-600	600	300	2000	-
2-CMS-ST-6W-700	700	300	2000	-
2-CMS-ST-6W-800	800	300	2000	-
2-CMS-ST-6W-900	900	300	2000	-
2-CMS-ST-6W-1000	1000	300	2000	-
2-CMS-ST-6W-1100	1100	300	2000	-
2-CMS-ST-6W-1200	1200	300	2000	-
2-CMS-ST-6W-1300	1300	300	2000	-
2-CMS-ST-6W-1400	1400	300	2000	-
2-CMS-ST-6W-1500	1500	300	2000	-
2-CMS-ST-6W-1600*	1600	300	2000	-
2-CMS-ST-6W-1700*	1700	300	2000	-
2-CMS-ST-6W-1800*	1800	300	2000	-
2-CMS-ST-6W-1900*	1900	300	2000	-
2-CMS-ST-6W-2000*	2000	300	2000	-
2-CMS-ST-6W-2100*	2100	300	2000	-

\*ON 6 ARMS

600MM DEPTH

CODE	L	D	H	BS
2-CMS-ST-6W-500	500	600	2000	-
2-CMS-ST-6W-600	600	600	2000	-
2-CMS-ST-6W-700	700	600	2000	-
2-CMS-ST-6W-800	800	600	2000	-
2-CMS-ST-6W-900	900	600	2000	-
2-CMS-ST-6W-1000	1000	600	2000	-
2-CMS-ST-6W-1100	1100	600	2000	-
2-CMS-ST-6W-1200	1200	600	2000	-
2-CMS-ST-6W-1300	1300	600	2000	-
2-CMS-ST-6W-1400	1400	600	2000	-
2-CMS-ST-6W-1500	1500	600	2000	-
2-CMS-ST-6W-1600*	1600	600	2000	-
2-CMS-ST-6W-1700*	1700	600	2000	-
2-CMS-ST-6W-1800*	1800	600	2000	-
2-CMS-ST-6W-1900*	1900	600	2000	-
2-CMS-ST-6W-2000*	2000	600	2000	-
2-CMS-ST-6W-2100*	2100	600	2000	-

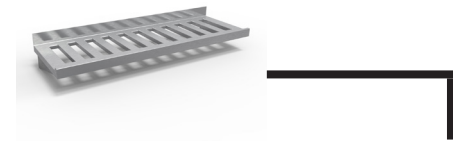
\*ON 6 ARMS



## WALL MOUNTED SHELF

CODE	L	D	H	BS
WMS-F-500	500	300	150	-
WMS-F-600	600	300	150	-
WMS-F-700	700	300	150	-
WMS-F-800	800	300	150	-
WMS-F-900	900	300	150	-
WMS-F-1000	1000	300	150	-
WMS-F-1100	1100	300	150	-
WMS-F-1200	1200	300	150	-
WMS-F-1300	1300	300	150	-
WMS-F-1400	1400	300	150	-
WMS-F-1500	1500	300	150	-
WMS-F-1600*	1600	300	150	-
WMS-F-1700*	1700	300	150	-
WMS-F-1800*	1800	300	150	-
WMS-F-1900*	1900	300	150	-
WMS-F-2000*	2000	300	150	-
WMS-F-2100*	2100	300	150	-

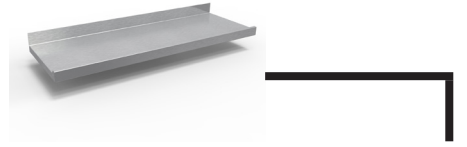
\*ON 3 BRACKETS



## WALL MOUNTED INVERTED SLOTTED SHELF

CODE	L	D	H	BS
WMS-SL-500	500	300	150	-
WMS-SL-600	600	300	150	-
WMS-SL-700	700	300	150	-
WMS-SL-800	800	300	150	-
WMS-SL-900	900	300	150	-
WMS-SL-1000	1000	300	150	-
WMS-SL-1100	1100	300	150	-
WMS-SL-1200	1200	300	150	-
WMS-SL-1300	1300	300	150	-
WMS-SL-1400	1400	300	150	-
WMS-SL-1500	1500	300	150	-
WMS-SL-1600*	1600	300	150	-
WMS-SL-1700*	1700	300	150	-
WMS-SL-1800*	1800	300	150	-
WMS-SL-1900*	1900	300	150	-
WMS-SL-2000*	2000	300	150	-
WMS-SL-2100*	2100	300	150	-

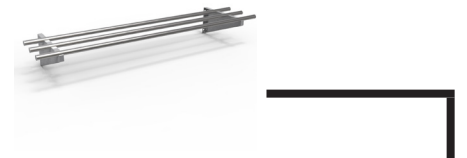
\*ON 3 BRACKETS



## WALL MOUNTED INVERTED SHELF

CODE	L	D	H	BS
WMS-INV-500	500	300	150	-
WMS-INV-600	600	300	150	-
WMS-INV-700	700	300	150	-
WMS-INV-800	800	300	150	-
WMS-INV-900	900	300	150	-
WMS-INV-1000	1000	300	150	-
WMS-INV-1100	1100	300	150	-
WMS-INV-1200	1200	300	150	-
WMS-INV-1300	1300	300	150	-
WMS-INV-1400	1400	300	150	-
WMS-INV-1500	1500	300	150	-
WMS-INV-1600*	1600	300	150	-
WMS-INV-1700*	1700	300	150	-
WMS-INV-1800*	1800	300	150	-
WMS-INV-1900*	1900	300	150	-
WMS-INV-2000*	2000	300	150	-
WMS-INV-2100*	2100	300	150	-

\*ON 3 BRACKETS



## WALL MOUNTED TUBULAR SHELF

CODE	L	D	H	BS
WMS-TB-500	500	300	150	-
WMS-TB-600	600	300	150	-
WMS-TB-700	700	300	150	-
WMS-TB-800	800	300	150	-
WMS-TB-900	900	300	150	-
WMS-TB-1000	1000	300	150	-
WMS-TB-1100	1100	300	150	-
WMS-TB-1200	1200	300	150	-
WMS-TB-1300	1300	300	150	-
WMS-TB-1400	1400	300	150	-
WMS-TB-1500	1500	300	150	-
WMS-TB-1600*	1600	300	150	-
WMS-TB-1700*	1700	300	150	-
WMS-TB-1800*	1800	300	150	-
WMS-TB-1900*	1900	300	150	-
WMS-TB-2000*	2000	300	150	-
WMS-TB-2100*	2100	300	150	-

\*ON 3 BRACKETS



## WALL MOUNTED CUPBOARDS - SLIDING

CODE	L	D	H	BS
WMC-2SLD-900	900	350	850	-
WMC-2SLD-1000	1000	350	850	-
WMC-2SLD-1100	1100	350	850	-
WMC-2SLD-1200	1200	350	850	-
WMC-2SLD-1300	1300	350	850	-
WMC-2SLD-1400	1400	350	850	-
WMC-2SLD-1500	1500	350	850	-
WMC-2SLD-1600	1600	350	850	-
WMC-2SLD-1700	1700	350	850	-
WMC-2SLD-1800	1800	350	850	-
WMC-2SLD-1900	1900	350	850	-
WMC-2SLD-2000	2000	350	850	-



## WORKTABLE OVERSHELF - 1 LAYER

CODE	L	D	H	BS
WOS-AT-400	400	300	450	-
WOS-AT-500	500	300	450	-
WOS-AT-600	600	300	450	-
WOS-AT-700	700	300	450	-
WOS-AT-800	800	300	450	-
WOS-AT-900	900	300	450	-
WOS-AT-1000	1000	300	450	-
WOS-AT-1100	1100	300	450	-
WOS-AT-1200	1200	300	450	-
WOS-AT-1300	1300	300	450	-
WOS-AT-1400	1400	300	450	-
WOS-AT-1500	1500	300	450	-
WOS-AT-1600*	1600	300	450	-
WOS-AT-1700*	1700	300	450	-
WOS-AT-1800*	1800	300	450	-
WOS-AT-1900*	1900	300	450	-
WOS-AT-2000*	2000	300	450	-
WOS-AT-2100*	2100	300	450	-



## WALL MOUNTED CUPBOARDS - OPEN

CODE	L	D	H	BS
WMC-OP-900	900	350	850	-
WMC-OP-1000	1000	350	850	-
WMC-OP-1100	1100	350	850	-
WMC-OP-1200	1200	350	850	-
WMC-OP-1300	1300	350	850	-
WMC-OP-1400	1400	350	850	-
WMC-OP-1500	1500	350	850	-
WMC-OP-1600	1600	350	850	-
WMC-OP-1700	1700	350	850	-
WMC-OP-1800	1800	350	850	-
WMC-OP-1900	1900	350	850	-
WMC-OP-2000	2000	350	850	-



## WORKTABLE OVERSHELF - 2 LAYER

CODE	L	D	H	BS
WOS-AT-2L-400	400	300	650	-
WOS-AT-2L-500	500	300	650	-
WOS-AT-2L-600	600	300	650	-
WOS-AT-2L-700	700	300	650	-
WOS-AT-2L-800	800	300	650	-
WOS-AT-2L-900	900	300	650	-
WOS-AT-2L-1000	1000	300	650	-
WOS-AT-2L-1100	1100	300	650	-
WOS-AT-2L-1200	1200	300	650	-
WOS-AT-2L-1300	1300	300	650	-
WOS-AT-2L-1400	1400	300	650	-
WOS-AT-2L-1500	1500	300	650	-
WOS-AT-2L-1600*	1600	300	650	-
WOS-AT-2L-1700*	1700	300	650	-
WOS-AT-2L-1800*	1800	300	650	-
WOS-AT-2L-1900*	1900	300	650	-
WOS-AT-2L-2000*	2000	300	650	-
WOS-AT-2L-2100*	2100	300	650	-



## SALAMANDER UPWARD BRACKET SHELF

CODE	L	D	H	TYPE
SS-BUP-800X550	800	550	280	For Electric
SS-BUP-950X600	950	600	280	For Gas

\*ON 6 BRACKETS

## KEEPING FOOD HOT AND FOOD SAFE.



### RIEBER BKW 1 x 2/1 GN HEATED BANQUET TROLLEY

Rieber Banquet Trolleys offer exceptional build quality combined with a host of added-value features. These trolleys have proved so reliable that they are used by hospitals as well as hotels and event caterers looking to keep food at the right temperature, whether hot or cold. Unlike some competitors, Rieber Hot Banquet Trolleys feature an adjustable humidity option which is essential for keeping meals moist and succulent.

- Made in Germany
- Up to 11 GN 2/1 Trays
- +30°C to +100°C
- L777 x D837 x H1712
- 2.0 kW
- 230V / 1Ph

# TROLLEY 048

## GASTRONOMY TROLLEY - 17 LAYERS



CODE	L	D	H
GST-525-660-1R	600	660	1660

## BAKING TROLLEY - 17 LAYERS



CODE	L	D	H
BTY-820-660	820	660	1660

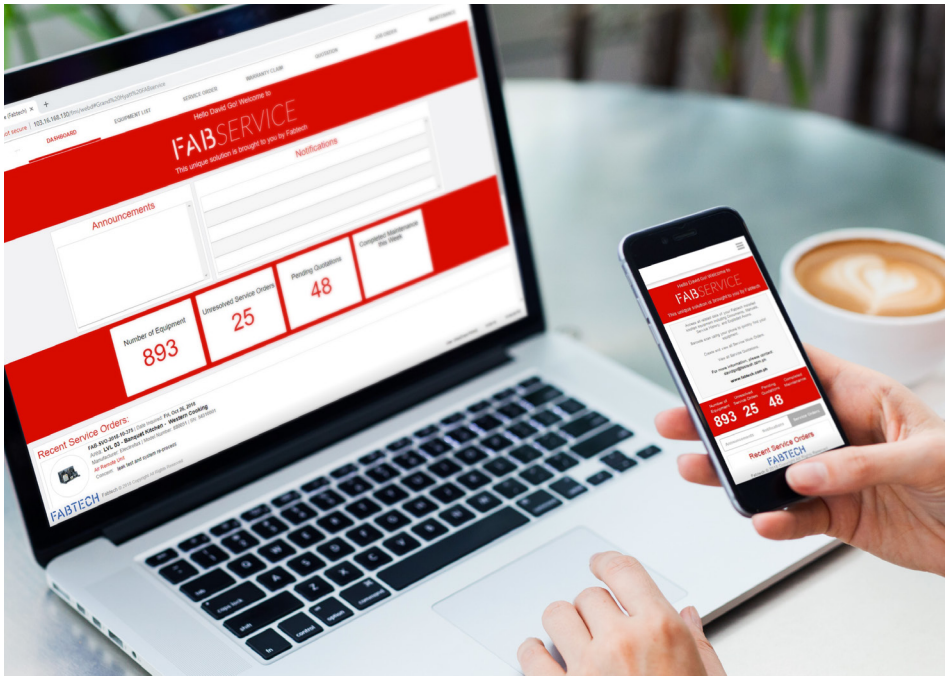
## COMBI TROLLEY FOR RATIONAL MODEL 202



CODE	MODEL	TRAY SLOTS	GN SIZE
RAT-CT-2021-15	RATIONAL 202	15	GN 1/1 , GN2/1
RAT-CT-2021-16	RATIONAL 203	16	GN 1/1 , GN2/1
RAT-CT-2021-17	RATIONAL 204	17	GN 1/1 , GN2/1
RAT-CT-2021-20	RATIONAL 205	20	GN 1/1 , GN2/1



# FABservice



As a solutions provider, we are constantly innovating to adapt to ever-changing global standards. One of our newest internal developments is the FABservice Cloud-based Application, which enables you to access all your service-related information from any device. This app has been developed internally in response to the issues that our industry often encounters.



## Equipment List

View all of your kitchen and laundry equipment. Track each equipment's health status and service history.



## Service Orders

Keep track of all the service orders requested by your company and their results.



## Manuals

Access all the manuals you need to run your equipment with a click of a button.



## Service Quotations

Never miss a payment to keep your equipment running.



## Reminders

Keep your equipment in top performance with reminders on when to replace consumables and parts.



## Maintenance Report

View all the reports generated by our comprehensive maintenance packages.

# BULK COOKING?



# NO PROBLEM.



## KUPPERSBUSCH FEP 950 MULTIFUNCTIONAL TILTING BRATT PAN

Time is precious, staff is rare and budget often low. Thus well thought through, professional solutions that make daily business more convenient, are needed more than ever. The new generation of Küppersbusch multifunctional tilting bratt pans are convenient to use and success is even more assured. Fast, precise and carefree preparation of food, easy cleaning, simply operational and seamless integration into your existing kitchen make your daily work easier.

- Made in Germany
- Rapid heating up to 230°C in 4.5 minutes
- H2 hygiene standard
- L1400 x D850 x H900
- 83 usable liters
- 27.15 kW
- 400V / 3Ph

# WASTE BIN WITH DOLLY 052

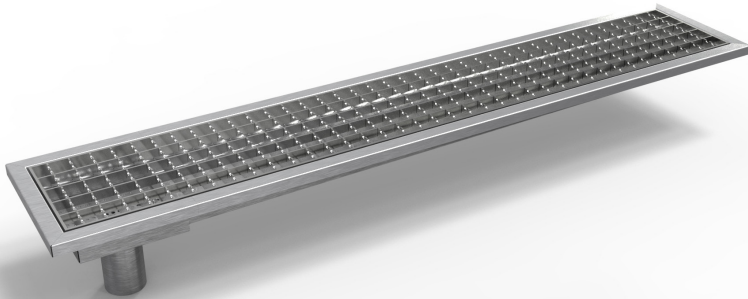
- Fully welded.
- 304 stainless steel.
- Rugged heavy duty design.
- Inclusive of casters.



CODE	L	D	H
WBD-350	350	350	650
WBD-430	450	450	650

# FLOOR GRATES WITH SUMP PAN 053

- Fully welded.
- 304 stainless steel.
- Rugged heavy duty design.



CODE	L	D	H
FGSP-200-200	200	200	40
FGSP-1050-200	1050	200	40
FGSP-300-300	300	300	40
FGSP-1050-300	1050	300	40

# 053 GREASE TRAP

CODE	L	D	H	REMARKS
GTSP-5	326	275	250	5GPM
GTSP-10	355	381	279	10GPM
GTSP-15	492	381	304	15GPM



# GREATER QUALITY WITH HIGHER YIELDS



CONVENTIONAL COOKING  
8.12 KG STARTING WEIGHT



ALTO-SHAAM COOK & HOLD  
8.12 KG STARTING WEIGHT

## HALO HEAT TECHNOLOGY.



### ALTO-SHAAM 750-TH/III DELUXE CONTROL COOK & HOLD OVEN

Adapts to any menu and every space. The 750-TH/III uses gentle, radiant heat to braise, roast, bake, proof and more. All while maximizing space. Low-profile casters allow the unit to be placed almost anywhere, even beneath a standard counter. Halo Heat technology provides the greatest moisture retention and most even cooking. Equipped with a unique thermal cabling, the oven cavity is surrounded with gentle, precise heat to evenly cook food. No fans. No harsh heating elements. No added humidity.

- Made in U.S.A.
- 10 1/1 gastronorm pans
- Cook range from 93°C to 162°C
- HACCP documentation data logger
- 2.8 kW
- 230 V / 1 Ph

## Makati

Phase 1 Block 3 Lots 2 & 3 Santiago St.  
Paseo de Magallanes Commercial Center,  
Makati City, Philippines 1232

## Calamba

Block 6A, Lot 1A  
Filinvest Technology Park Calamba,  
Laguna, Philippines

## Contact

t +63 (02) 851 0333  
e sales@fabtech.com.ph  
www.fabtech.com.ph

